



Improving Management Effectiveness of the Protected Area Network

ECPTA- BSP North Eastern Grassland

ADVENTURE PROVINCE
Eastern Cape
PARKS & TOURISM AGENCY

7/12/2016

By: Thembanani Nsibande



To Cover

- Project Background
- Project Components
- Project Maps
- Project Team
- New Appointments
- Project Progress
- 2017 Work Prioritization
- Challenges and Mitigations



Project Background

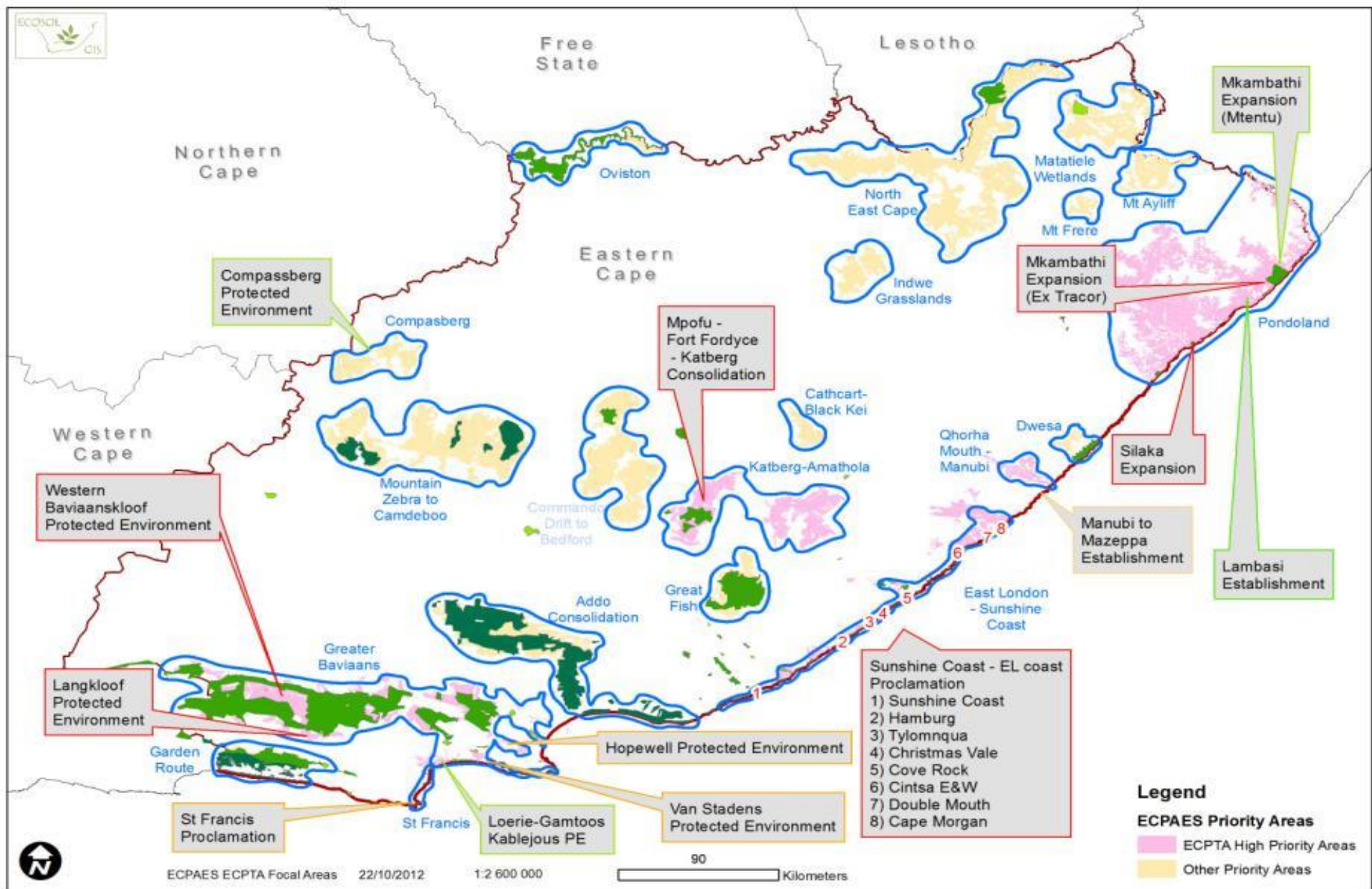
- Expand globally important terrestrial habitat by establishing new Protected Areas (197 000 ha).
- The project utilizes contractual agreements with private and communal land owners.
- Identified and mapped priority areas through the ECPAES.
- Committed to achieve 30 000 ha by 2019.
- Focusing on two priority areas; Katberg-Amathole and the North Eastern Grasslands.

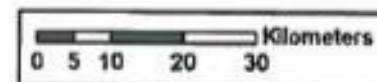
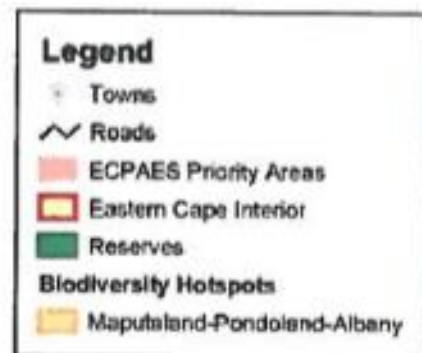
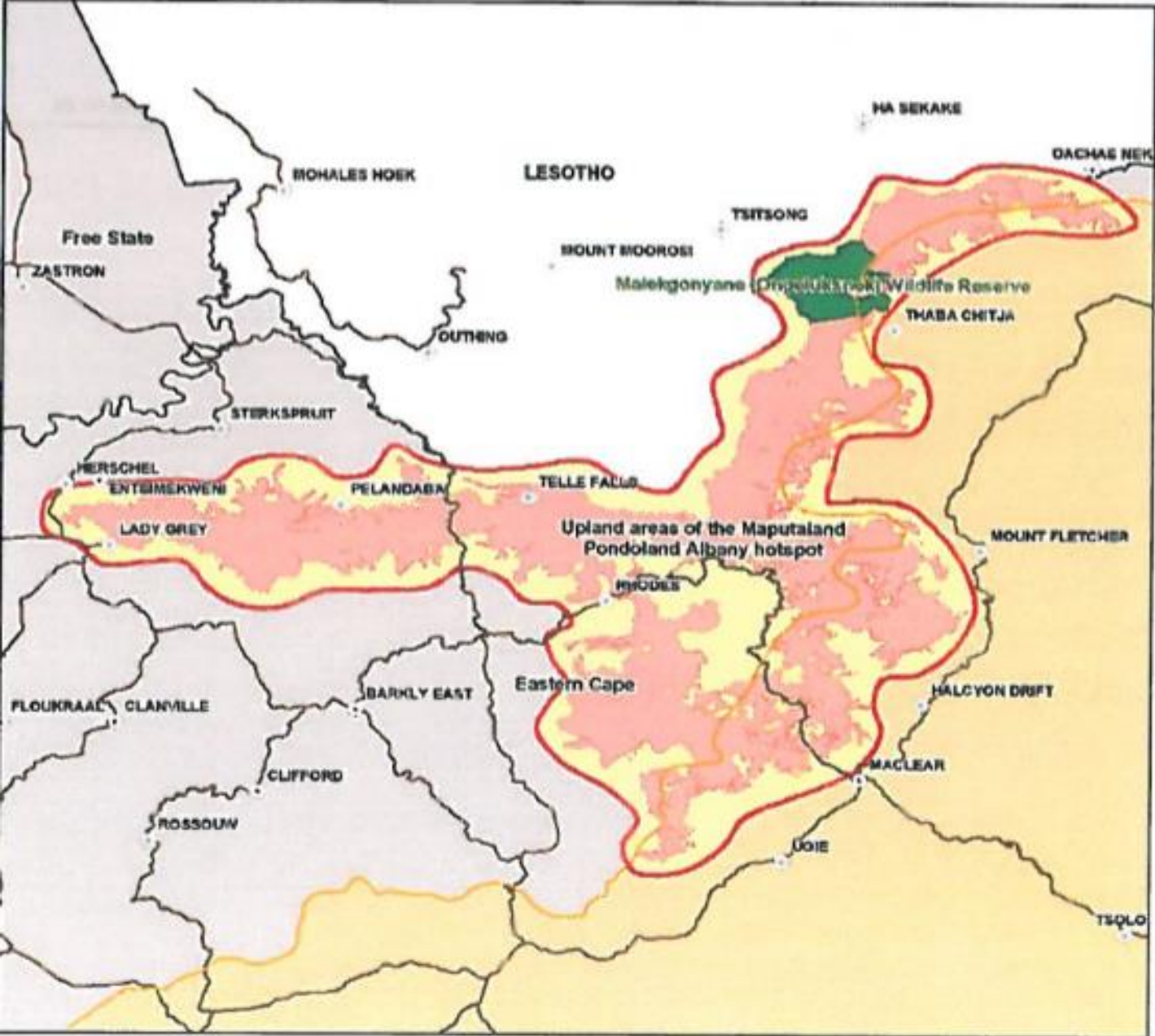


Project Components

Component 1	Component 2	Component 3
Establishment of new PA	Improve Management Effectiveness of new & existing PAs	Improve Financial Sustainability of PAs
<ul style="list-style-type: none">• Establishment of new PA – 30 000ha• Katberg –Amathole• NE Grasslands	<ul style="list-style-type: none">• Transfer of DAFF forest state land to ECPTA• Declare portions of land managed by ECPTA - 10 000ha• METT	<ul style="list-style-type: none">• To be explored







EMROSS Consulting (pty) Ltd

P.O. Box 507
White River
1240
www.emross.co.za




ECPTA Project Team

- Stewardship Manager
 - ✓ Malaika Koali-Lebona
- Stewardship Facilitator (Katberg-Amathole)
 - ✓ Thembelihle Mjamba
- Stewardship Facilitator (NE Grasslands)
 - ✓ Thembanani Nsibande
- Project Accountant (internal secondment)
 - ✓ Zandiswa Sikweza
- Legal Support (part-time internal secondment)
 - ✓ Melumzi Fadashe



Still to be Appointed

- Stewardship Ecologist
 - One recruitment round already
 - Re-advertised in November
 - Will head-hunt if necessary
- GIS Technician
 - To be advertised
- Legal Support
 - Appoint service providers



Project Progress to Date

- Recruitment
 - Advertisements in June
 - Shortlisting and interviews in August
 - Appointments w.e.f. 1 November 2016
- Staff induction and orientation
- Staff trainings
- Procurement of project material.



Project Progress to Date

➤ Cedarville Protected Environment

- Declared as a Protected Environment in May 2015
- The Protected Environment is +/- 15 000 ha
- Management plan to be completed latest January 2017
- ECPTA will support the submission of PAMP to MEC for approval
- Ensure that PAMA is signed



2017 Major work prioritisation

- Katberg- Amathole & NE Grasslands (30 000ha)
 - Identify & engage with stakeholders and land owners
 - Biodiversity site assessments
 - PAMA's & PAMP's
 - Publish intention to declare
 - Public participation, consultation with relevant stakeholders



2017 Major work prioritisation



Challenges & Mitigations





Thank you!

ADVENTURE PROVINCE
Eastern Cape
PARKS & TOURISM AGENCY

