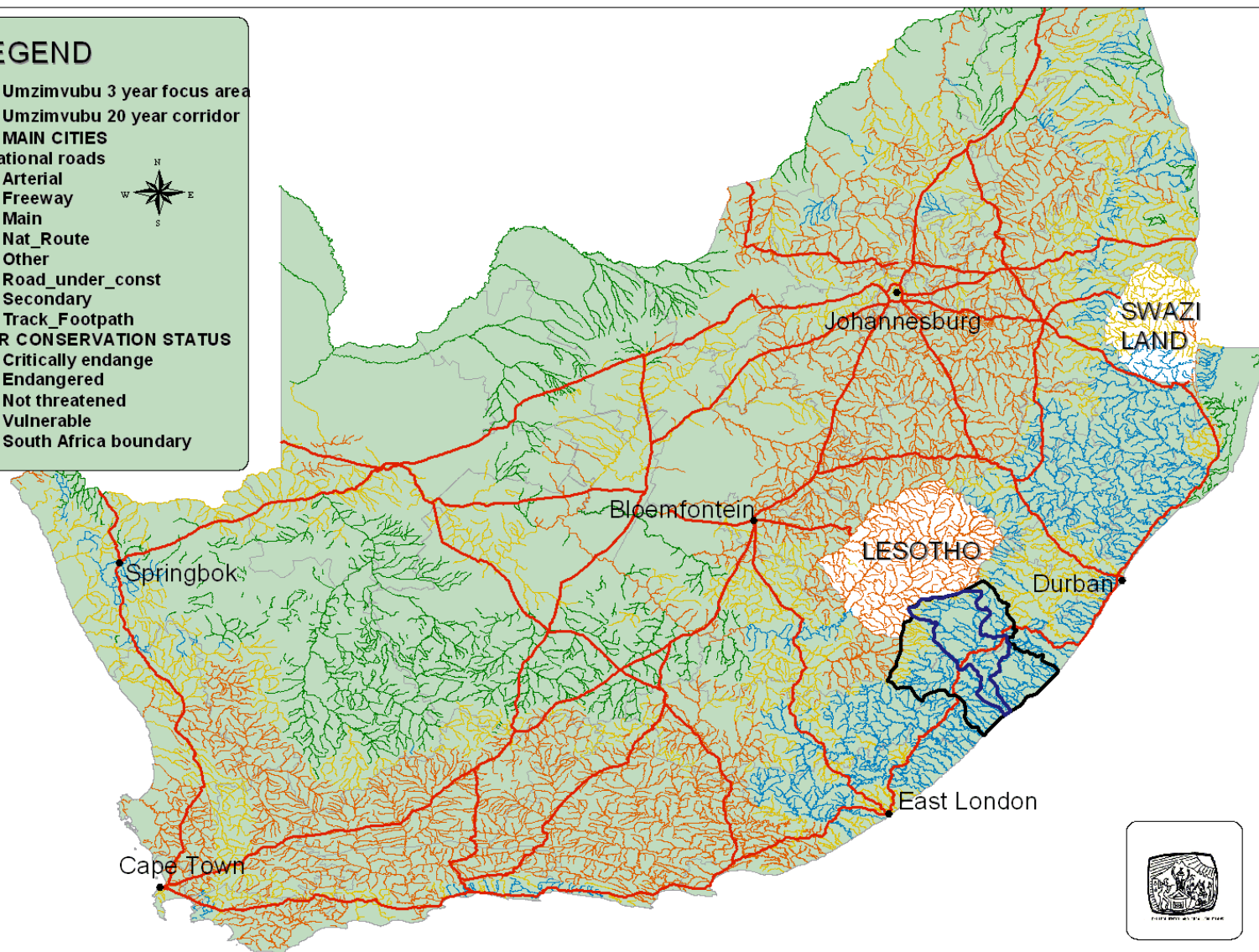


UMZIMBUBU CATCHMENT PARTNERSHIP PROGRAMME

RESTORATION OF WATERSHED FUNCTIONS &
ECOSYSTEM SERVICES
THROUGH LOCAL CUSTODIANSHIP



UMZIMVUBU CATCHMENT CONSERVATION CORRIDOR WITHIN RIVER CONSERVATION STATUS IN SOUTH AFRICA



00

0

600

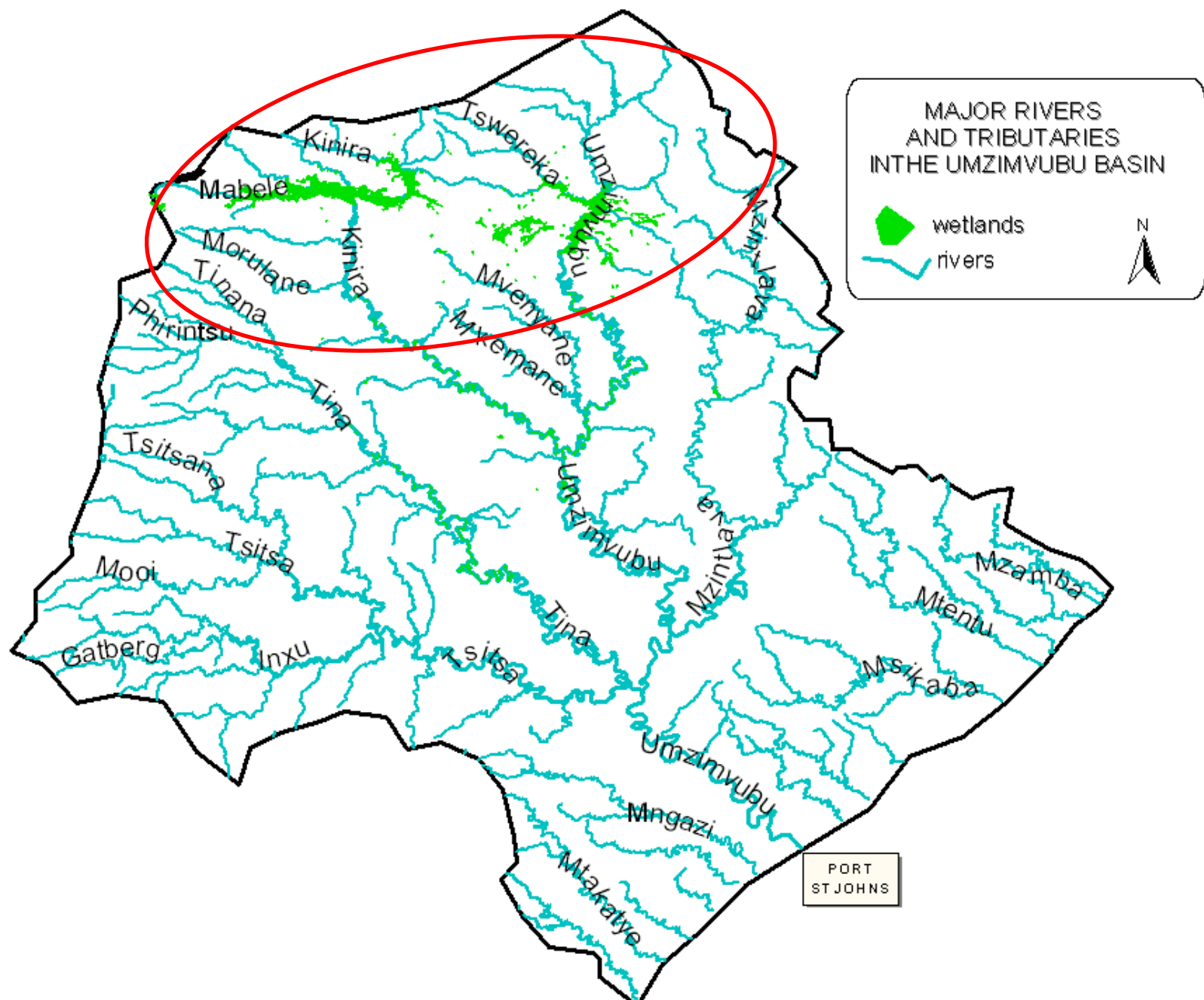
1200 Kilometers



MZIMVUBU: UPPER SYSTEM MAIN TRIBUTARIES

- KINIRA
- SEETA
- LEBELLE
- MZIMVUBU







Legend

- Mehlodong Hiking Trail
- Wattle Infested
- Main Rivers

ALIEN PLANT INFESTATION

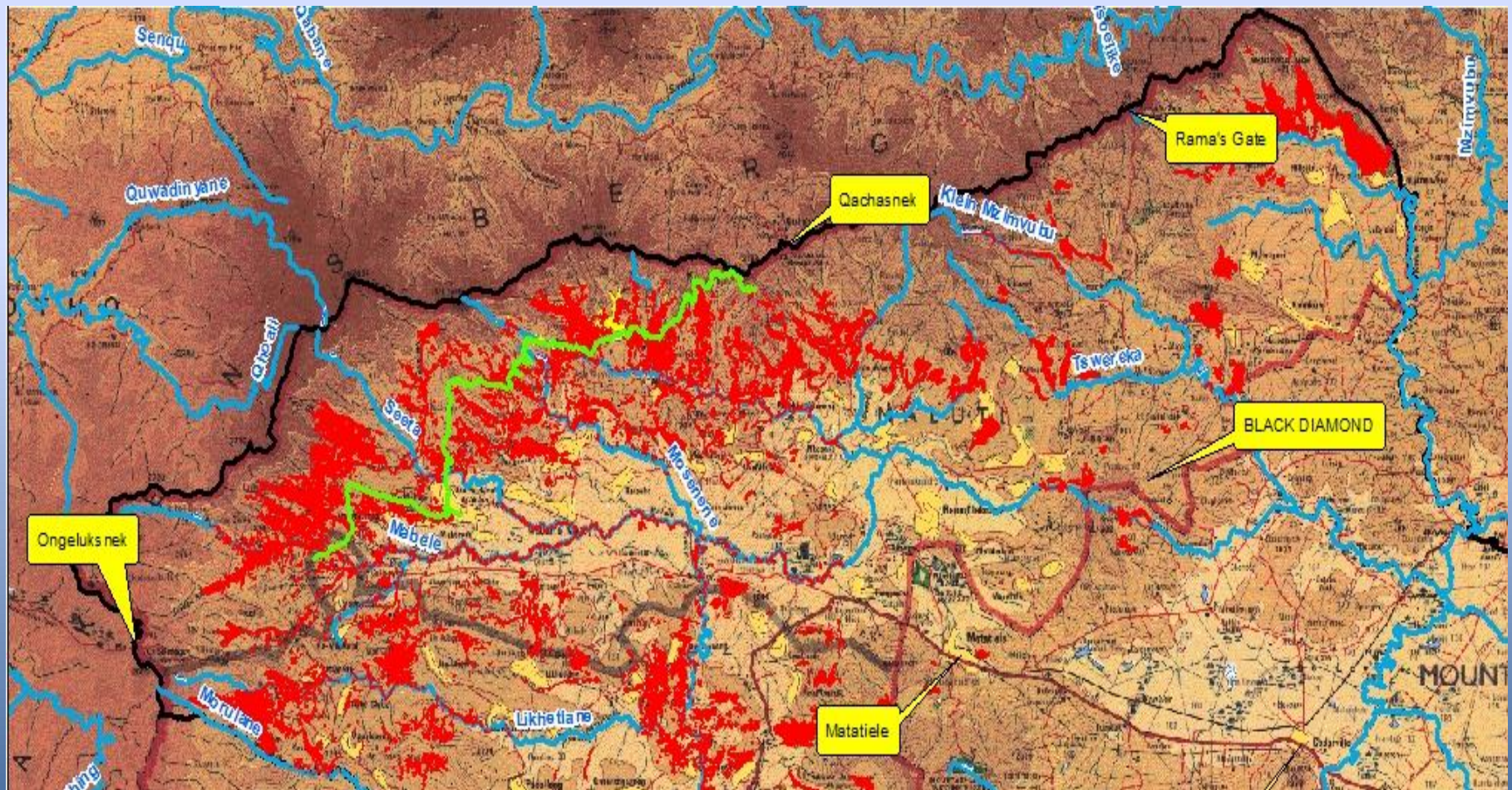
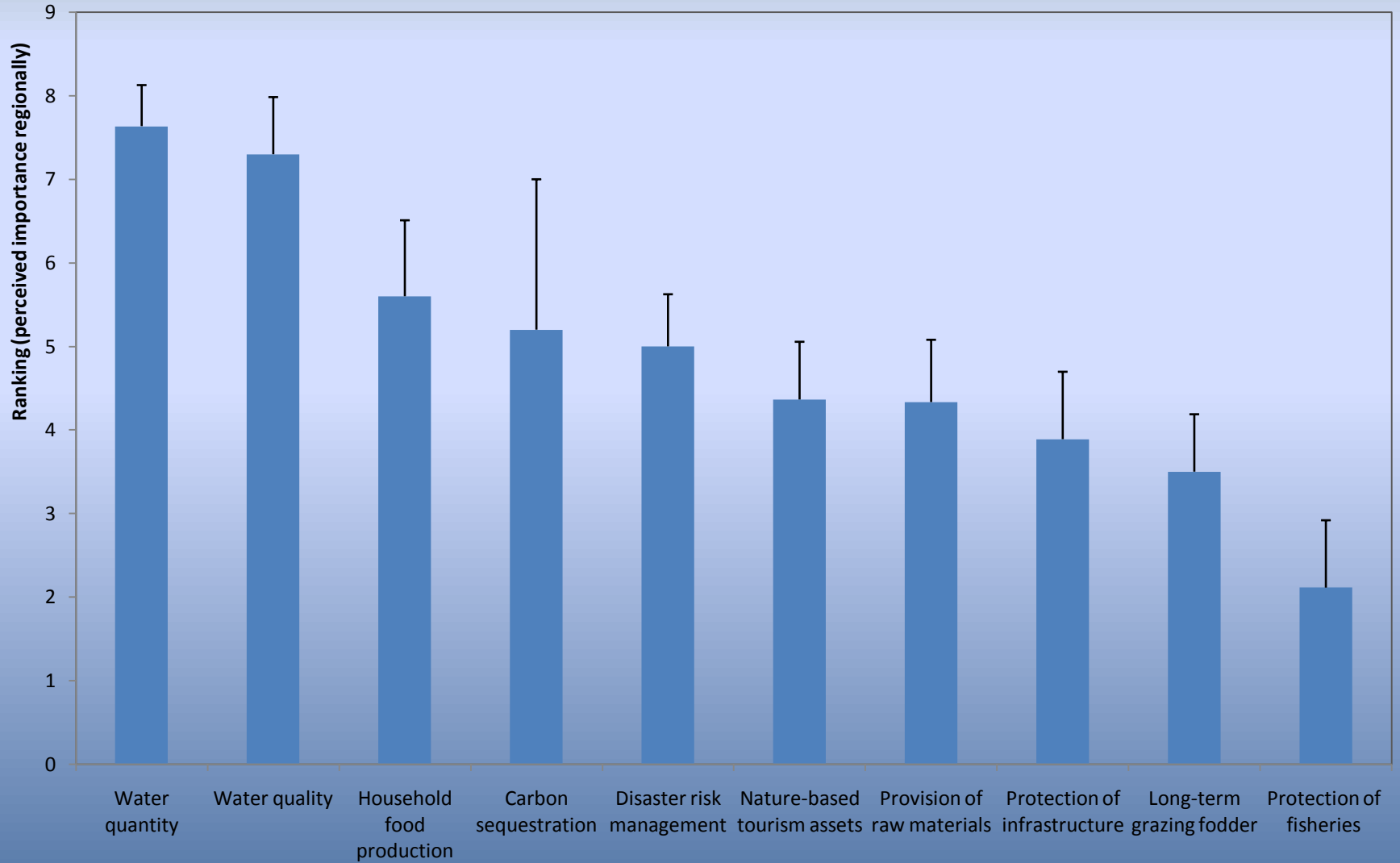


Figure 1: Regional ranking of ecosystem services in Umzimvubu Catchment by Alfred Nzo stakeholders.



UCPP RELEVANT ACTIVITIES

- MOU SIGNED BETWEEN 29 PARTNERS
incl DWA, DEDEAT, CSOs, Traditional
Authorities, Municipalities
- CO-ORDINATION OF ALIEN CLEARING
between roleplayers incl
WfW, NRM, donor-funded CSOs
(strategic and implementation levels)
- EE COLLABORATION with
DEDEAT, ECOSCHOOLS
- M. Sc. RESEARCH students incl
AQUATOX, alien control and hydrology
- GROEN SEBENZA interns being
hosted – hydrology, stewardship and
EIA processes



OPPORTUNITIES FOR COLLABORATION WITH DWA

- HYDROLOGY MONITORING, DATA COLLECTION & SHARING
- ALIEN CLEARING LOCAL CO-ORDINATION AND INNOVATION TOWARDS LONG TERM MAINTENANCE BY LAND USER GROUPS, VALUE ADDING
- ENV ED PRACTICAL SUPPORT AND EXPOSURE FOR SCHOOLS
- LOCAL CATCHMENT MANAGEMENT FORUM FUNCTION?
- RESTORATION ACTIVITIES TOWARDS IMPROVED WATERSHED FUNCTION
-



