



O.R. TAMBO  
DISTRICT MUNICIPALITY

# O.R TAMBO DISTRICT MUNICIPALITY UCPP PRESENTATION 03 JUNE 2015 MATATIEL

UPHULISO  
LOLUNTU

# Introduction

2

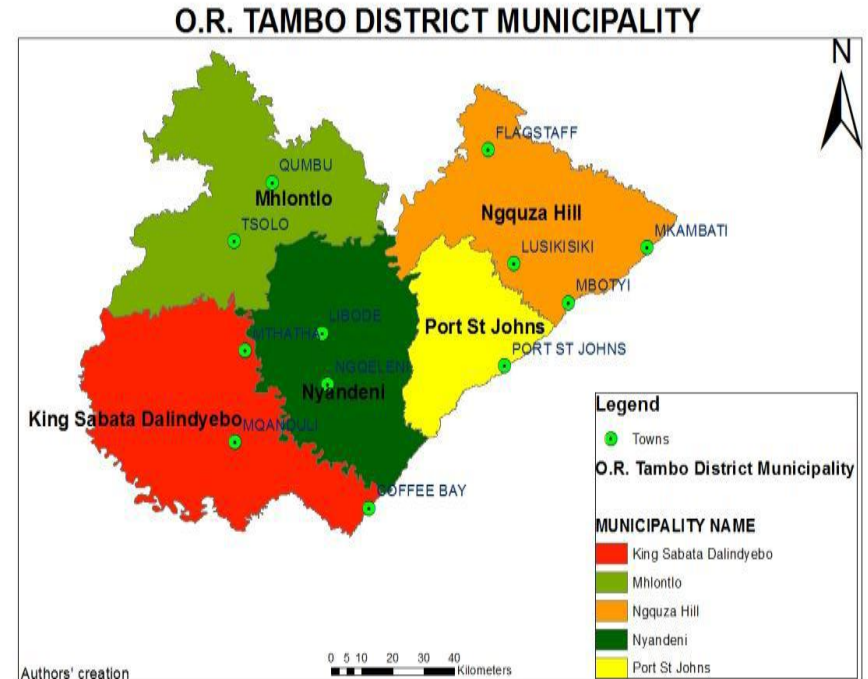
- The O.R Tambo District Municipality is in the East of the province is bordered by Alfred Nzo District to the northeast, the Indian Ocean to the southeast, Amathole District to the south-west, Chris Hani District to the west and Joe Gqabi District to the north-west.
- Made of Five LM

# 5 LMS

3

## □ 5 local municipalities

- KSD LM
- Ingquza LM
- Nyandeni LM
- Mhlontlo LM
- And PSJ LM



# Is climate change real

4

- Several incident have been experienced in the region that proves indeed climate change exist.
- Extreme weather conditions (floods windstorms)
- Shifting season
- Droughts
- Dwindling agricultural yields (LED Diver)
- Biodiversity (changing Biomes)

# Flooding in cremorne 2013 (PSJ)

5



# Psj

6



# Mthatha west (2013)

7



# Wind storms

8



# Collapsing infrastructure

9



# Why Municipalities to consider climate change.

10

- ❑ The NCCRP recognise municipality as the site of delivery
- ❑ Where the actual impacts of climate change will be felt,
- ❑ Section 10.2.6 notes the key role of local government as
  - ❑ Planning and urban development;
  - ❑ Municipal infrastructure and services;
  - ❑ Water, energy and waste demand management and
  - ❑ Local disaster response.
- ❑ Needs a collective approach

# Biodiversity in the region

11

- Range of habitats, including upland and coastal grassland, afro-montane and coastal forest, valley thicket, thorny bushveld, coastal and marine habitats.
- Maputoland Pondoland albania hotspot
- Two components are of particular interest
  - The coastal forests, bushveld and
  - Grassland of the Pondoland area north of Mbotyi
- Identified as Pondoland centre of Endemism

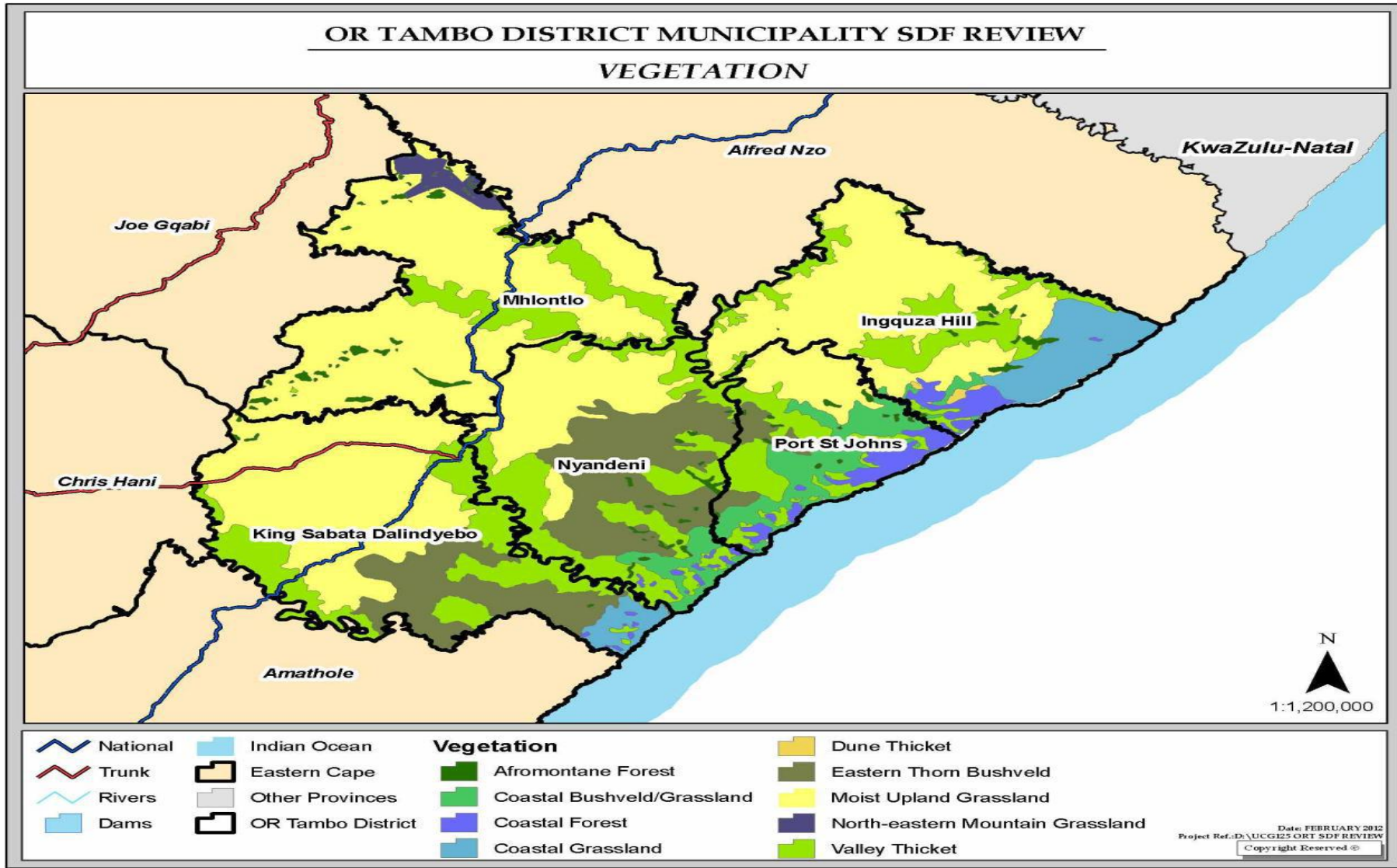
# Conti.....

12

- The District has the International and well renowned Wild Coast identified as a biodiversity priority area ECBP.
- In addition, there are 5 protected areas in the ORTDM, namely Mkambati, Silaka, Hluleka, Nduli and Luchaba.
- With evidence of climate change>>>dwindle>>disappear

# Veg.. map

13



# Wayforward

14

- Workshop (15 march)
- Coastal Management Program (on progress)
- Environmental Management Plan (on Progress)
- Budgeting for DCCRS (1 million)
- Integration to IDP (toolkit workshop with SALGA) July -August
- Biodiversity management Plan