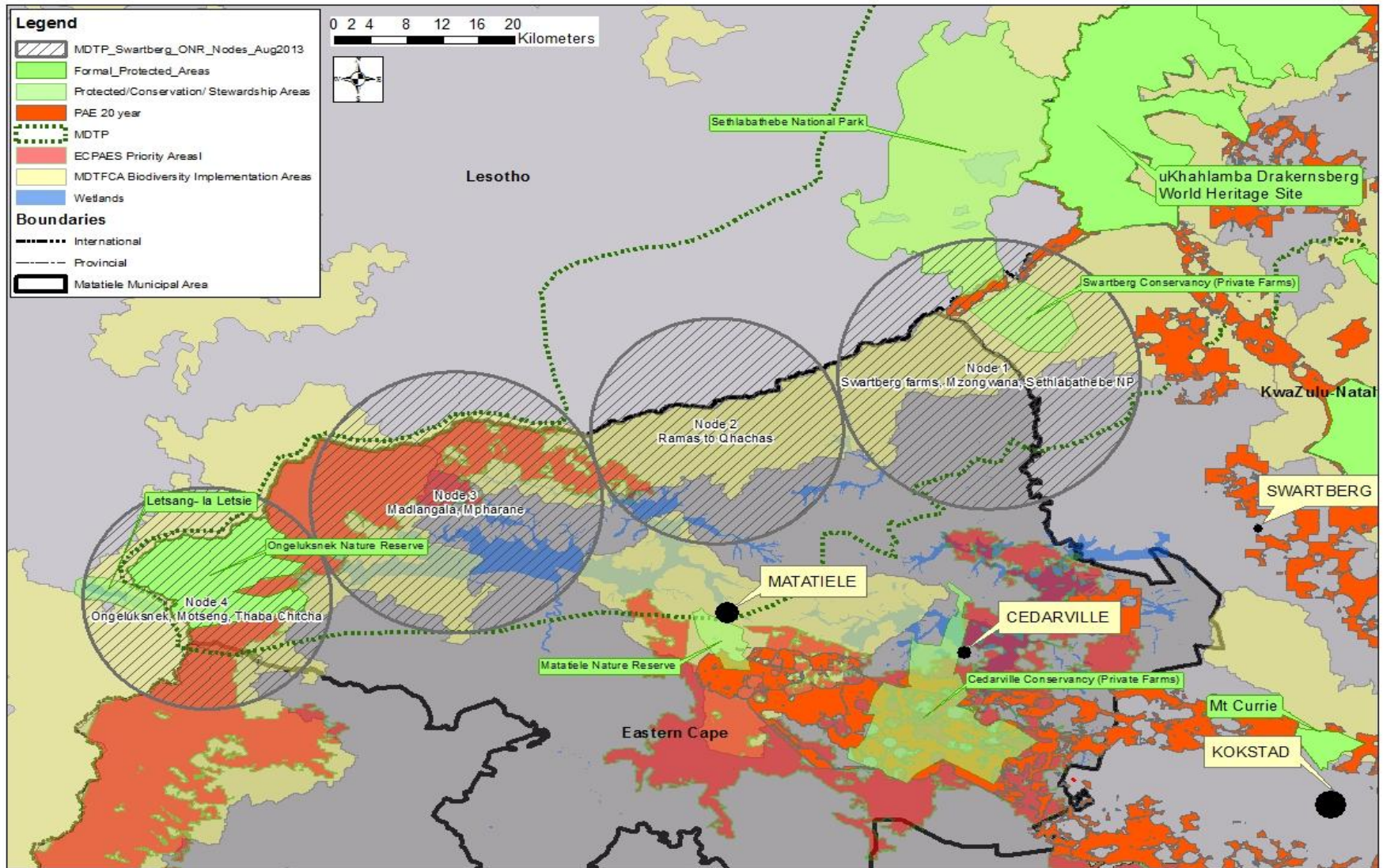


STEWARDSHIP OPPORTUNITIES FOR MATATIELE WATER FACTORY PROCLAMATION

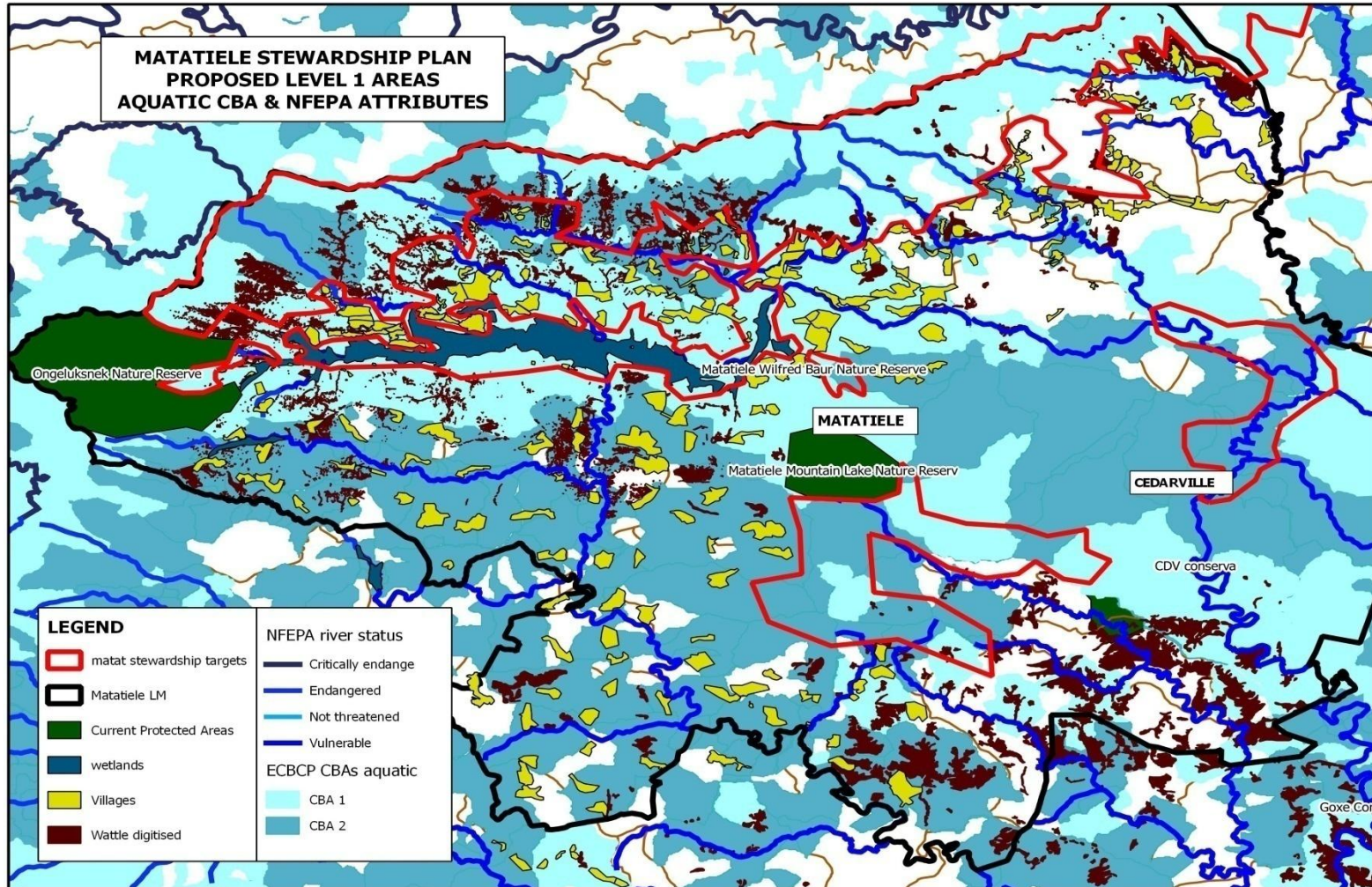


WHY STEWARDSHIP?

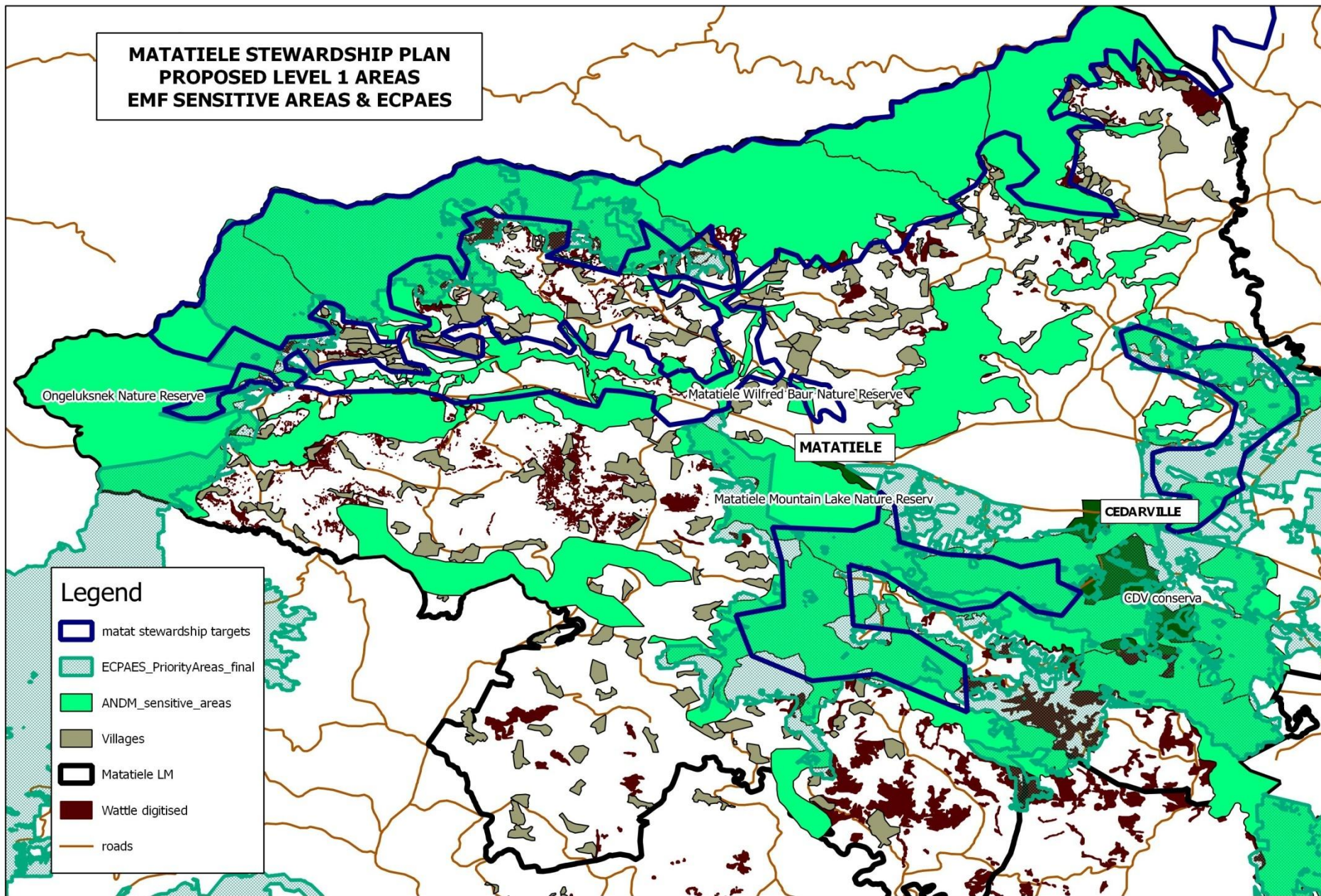
- Rapid degradation & loss of habitat across all provinces: increasing vulnerability to biome changes.
- National need to expand protected areas and increase land contributing to conservation targets: building climate change resilience
- Expensive for state to purchase, fence and manage conservation land and reserves
- 80 % of biodiversity found on non-state and private land, and is not formally protected.
- Survival of many species dependant on private landowners and communities.

TARGET AREAS FOR PROPOSED STEWARDSHIP:

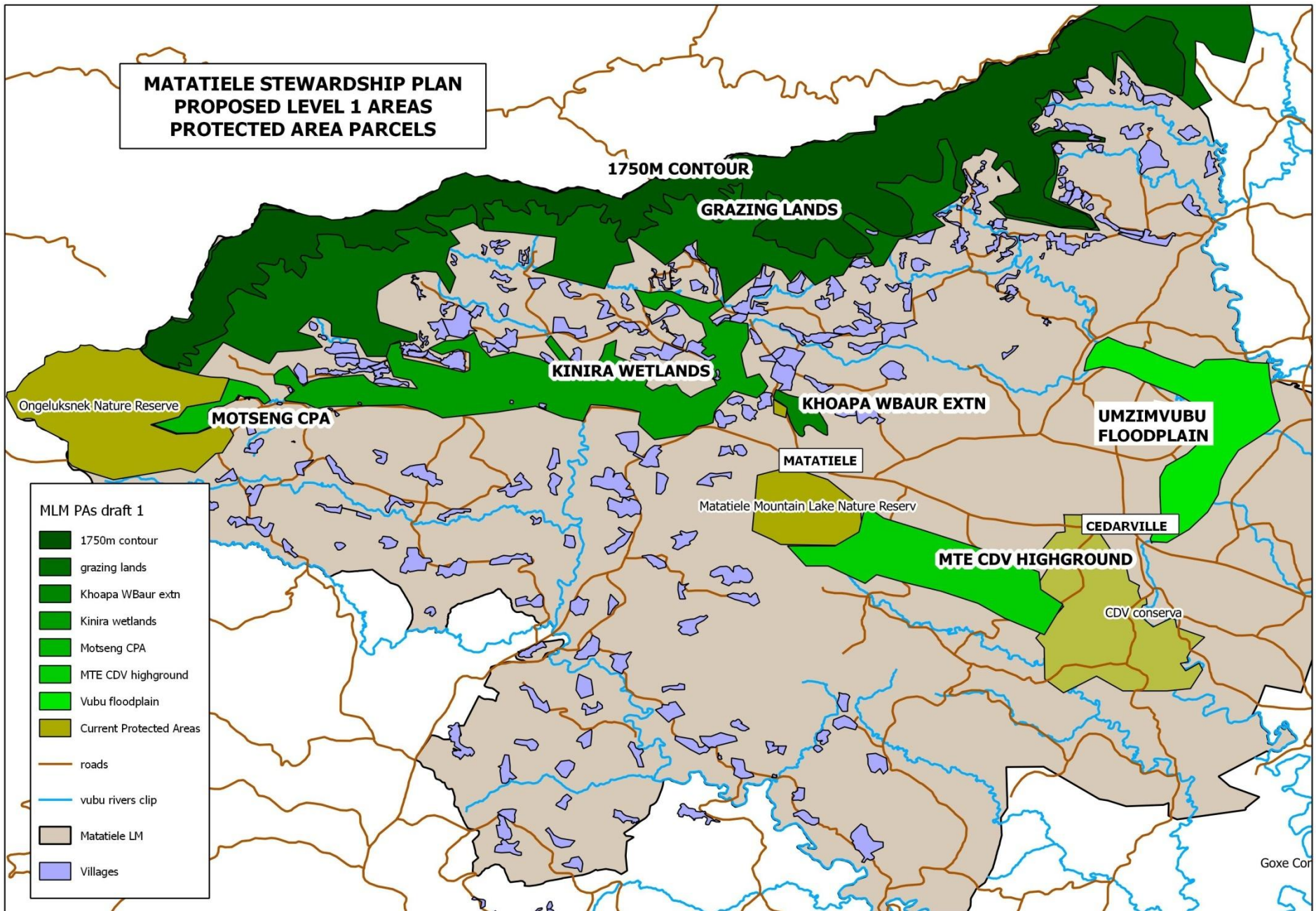
LEVEL 1: Initial target areas for protection, selected based on interface of areas of conservation importance, based on maps for ECPAES, VA, NFEPAs, EMF sensitive areas, MPAH KBAs and Critical Biodiversity Areas (CBAs), and areas where partners are already working.



**MATATIELE STEWARDSHIP PLAN
PROPOSED LEVEL 1 AREAS
EMF SENSITIVE AREAS & ECPAES**



**MATATIELE STEWARDSHIP PLAN
PROPOSED LEVEL 1 AREAS
PROTECTED AREA PARCELS**



LEVEL 2: modified areas based on initial field exploration of level 1 mapped areas

LEVEL 3: areas again modified, based on consultation with traditional leadership

LEVEL 4: further refinement based on fine scale mapping, with GIS expertise, to present to stakeholders through public consultation process. Can be further refined based on feedback (Level 4b), to provide maps for public participation and for submission with notice of intent.

TYPE	LEVEL	ATTRIBUTES
Biodiversity Partnership Agreement	1	<ul style="list-style-type: none">- Innovative, encourages through incentives and recognition for compliance;- contractual stakeholder partnership based on regulated process- most flexible, smoothest facilitation- does not afford any legal protection; Can restrict but not prevent activities e.g. mining
Biodiversity Agreement	2	<ul style="list-style-type: none">- Can restrict but not prevent activities e.g. mining
Biodiversity Management Agreement	3	<ul style="list-style-type: none">- IUCN recognised even though not promulgated under NEMPAA, i.e. no protected area status- Can be for SPECIES or ECOSYSTEM- Requires Bio. Management Plan and structured zoning- Will specify allowable activities through public consultation and publication- Can restrict but not prevent activities e.g. mining, creating extra layer of protection
Protected Environment	4	<ul style="list-style-type: none">- Promulgated by MEC under NEMPAA, 2 ministers required to sign- Can restrict but not prevent activities e.g. mining, creating extra layer of protection
Nature Reserve	5	<ul style="list-style-type: none">- Official promulgation / notarial process through NEMPAA- Land bound for minimum of 99 years through title deed, independent of owner- Prohibits any transformation activities such as mining- Prescribed compliance, management and restrictions
National park	6	<ul style="list-style-type: none">- Managed by SANParks, very secure form of conservation stewardship- Mining prohibited- Restricted land use and access, tightly prescribed compliance, management and restrictions
Special nature reserve	7	<ul style="list-style-type: none">- Most restricted and restrictive, managed by SANParks- Very secure stewardship in perpetuity

PROPOSED PROCESS:

- Technical team draft an approach outlining an initial concept note with possible proclamation options and general maps (level 1) to guide the process (see section on GIS process)
- Introduce the idea to the MLM Env Lobby Committee and Traditional Leaders Council / Forum, to explain stewardship options and proposed process as per concept note and maps
- MLM Lobby Committee present to Council for endorsement of process
- Internal stakeholder site visits (technical, municipal, leadership, authorities) to the proposed target areas – use as basis for adapting initial level 1 mapping to generate level 2 maps.
- Site visits and discussions with Chiefs reps regarding areas based on level 2 maps. Adapt boundaries and areas to be included or excluded to develop level 3 maps, based on based on consultation with Traditional leaders and further field verification if needed.
- Commission a study for fine scale mapping based on previous stages (site visits and consultation with leadership), to develop level 4 maps for consultative mapping with target groups.
- Technical team develop outreach plan/protocol for consultation with target communities, arrange public sessions through relevant leadership channels (Ward committees and Traditional leaders)
- Facilitate public consultation workshops with target communities – EE, awareness, stewardship, learning exchanges on various subjects, consultative GIS and ranking, etc. Refine boundaries if needed to generate level 4b maps.
- Seek community resolutions through public consultation, with support of DRDLR.
- Develop management plans and stewardship practises where required
- Express interest to declare the area to the MEC - if required. Pursue appropriate public participation process as per NEMPA guidelines, with ECPTA guidance.
- Report back to local leadership on progress, and facilitate amendments and specific information or mandates if required
- Present proclamations and management plans to stakeholders, and....
- facilitate sustained implementation plan to satisfy any contractual requirements!!!!

SUPPORT AGENCIES FOR MATATIELE STEWARDSHIP INITIATIVE	
ECPTA	Formal guidance on appropriate stewardship options; facilitate proclamation process (public participation and intention to declare where required)
DEDEAT	Support for formal process; assist with consultation
MLM	Official proponent providing mandate; assist with communication and consultation; support planning meetings with venue and catering?
MDTP	Formal guidance and endorsement; Transfrontier linkages; assist with consultation; possible funding support for exchange learning and training
CONTRALESA	Guidance and endorsement; assist with community consultation
DRDLR	Community resolution facilitation for state land parcels
WESSA	Assist with consultation; provide capacity building and awareness
CSA	Consultation support
EWT	Consultation support; local support for reference to formal process
LIMA	Consultation support
ERS	Consultation support; assist MLM to drive process; limited CEPF funding for mapping and facilitation until Sept 2015
MATAT EDA	Consultation support;
MEHLODING	Consultation support along trail area between Motseng and Madlangala

Adopted by Matatiele
Council on 29 May 2015 👍

