



**Maas Maasen
Fund**

UEIP

Capacity for Catchments

Securing Ecological Infrastructure in the uMngeni Catchment

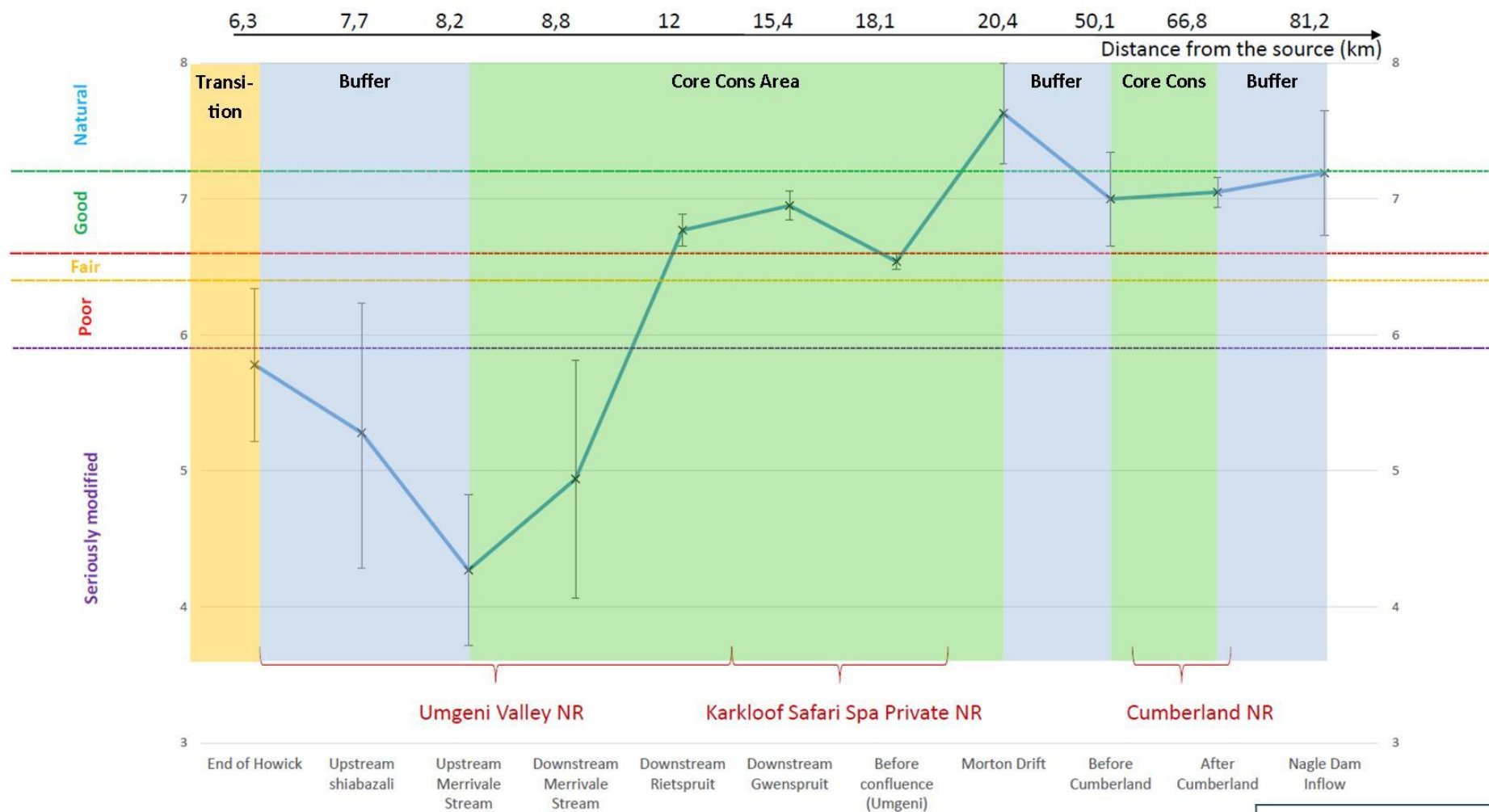
Lemson Betha

lemson.betha@wessa.co.za

Tel: 033 330 3931



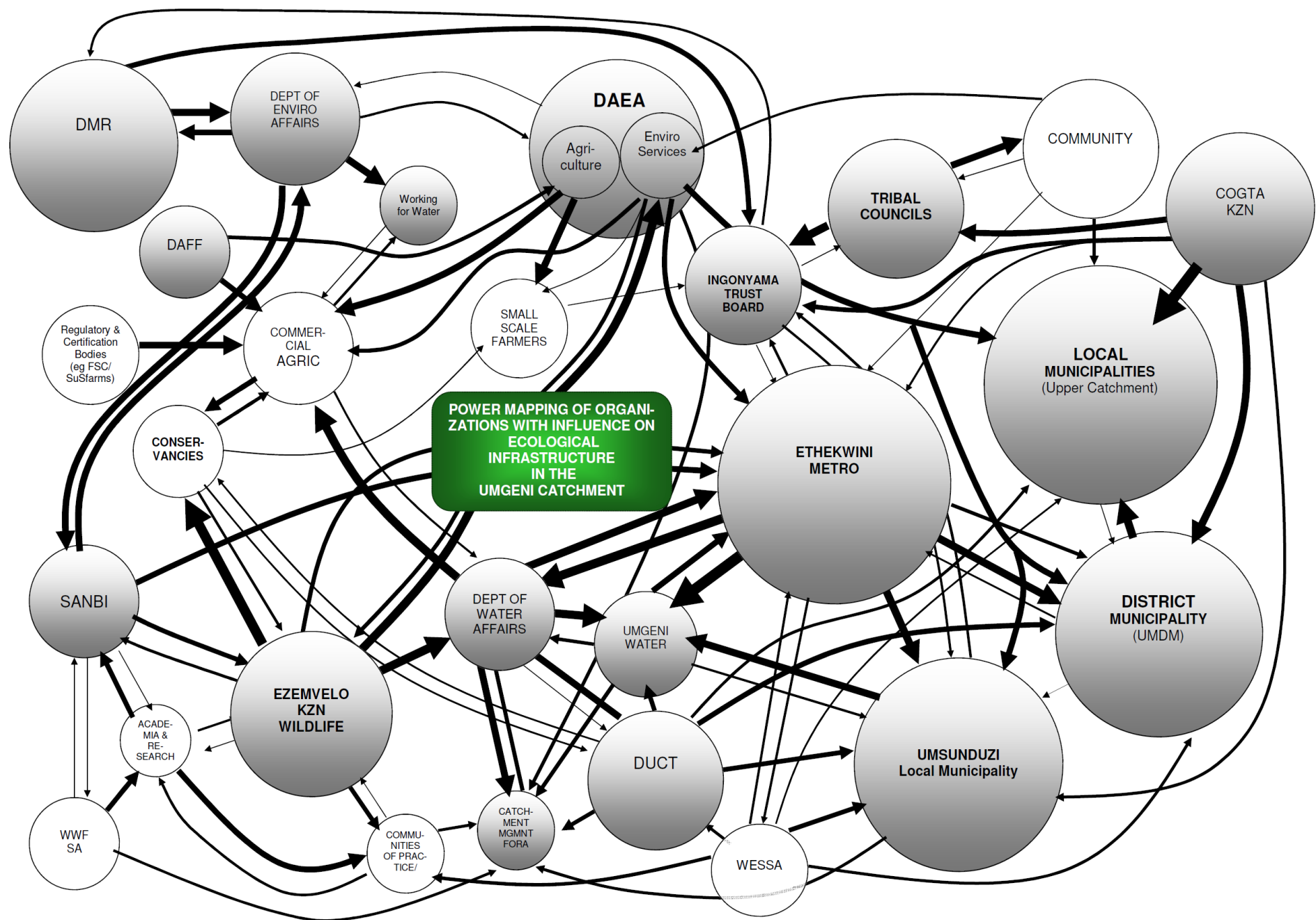




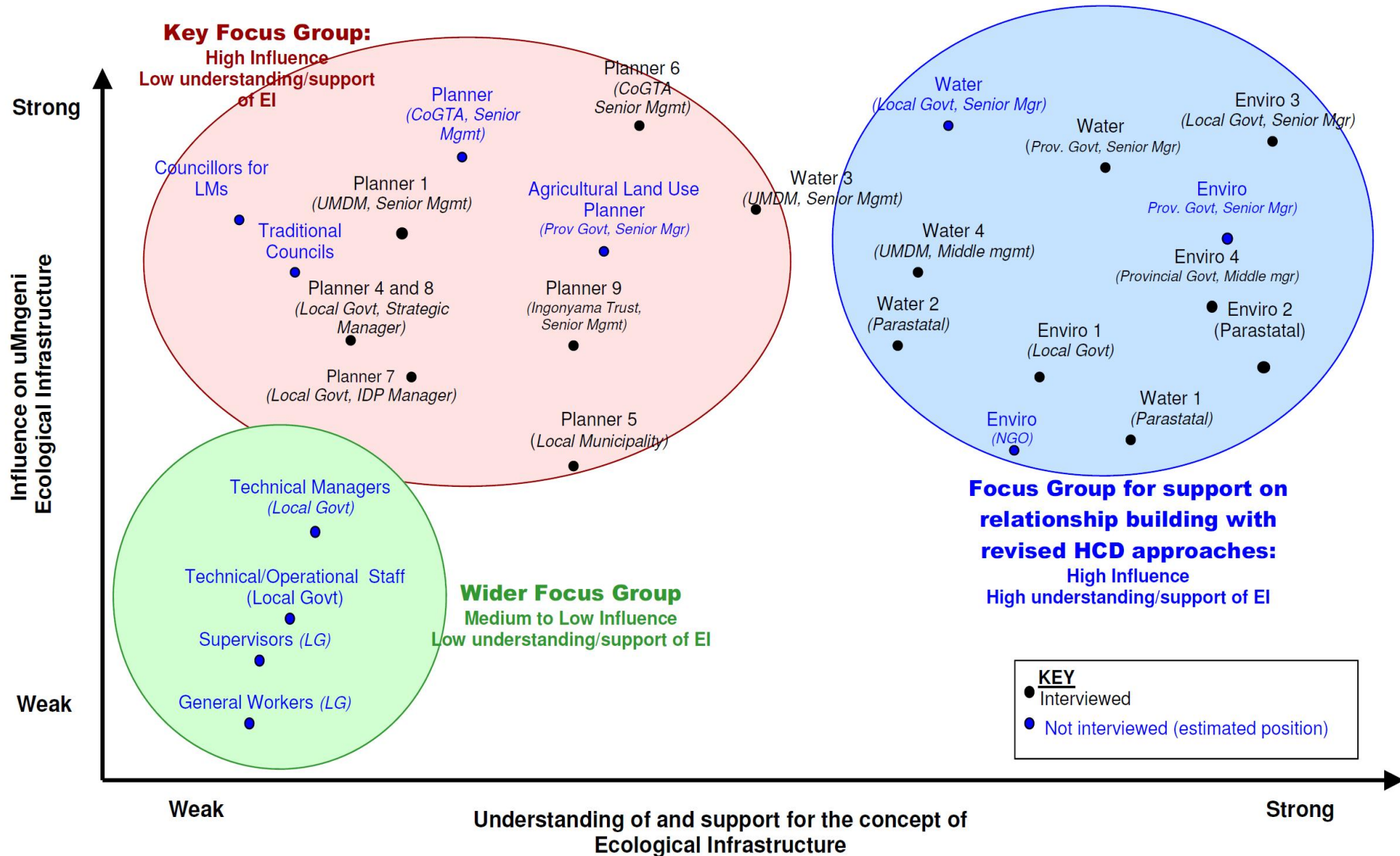
SASS5 Results Along uMngeni River, downstream of Midmar Dam

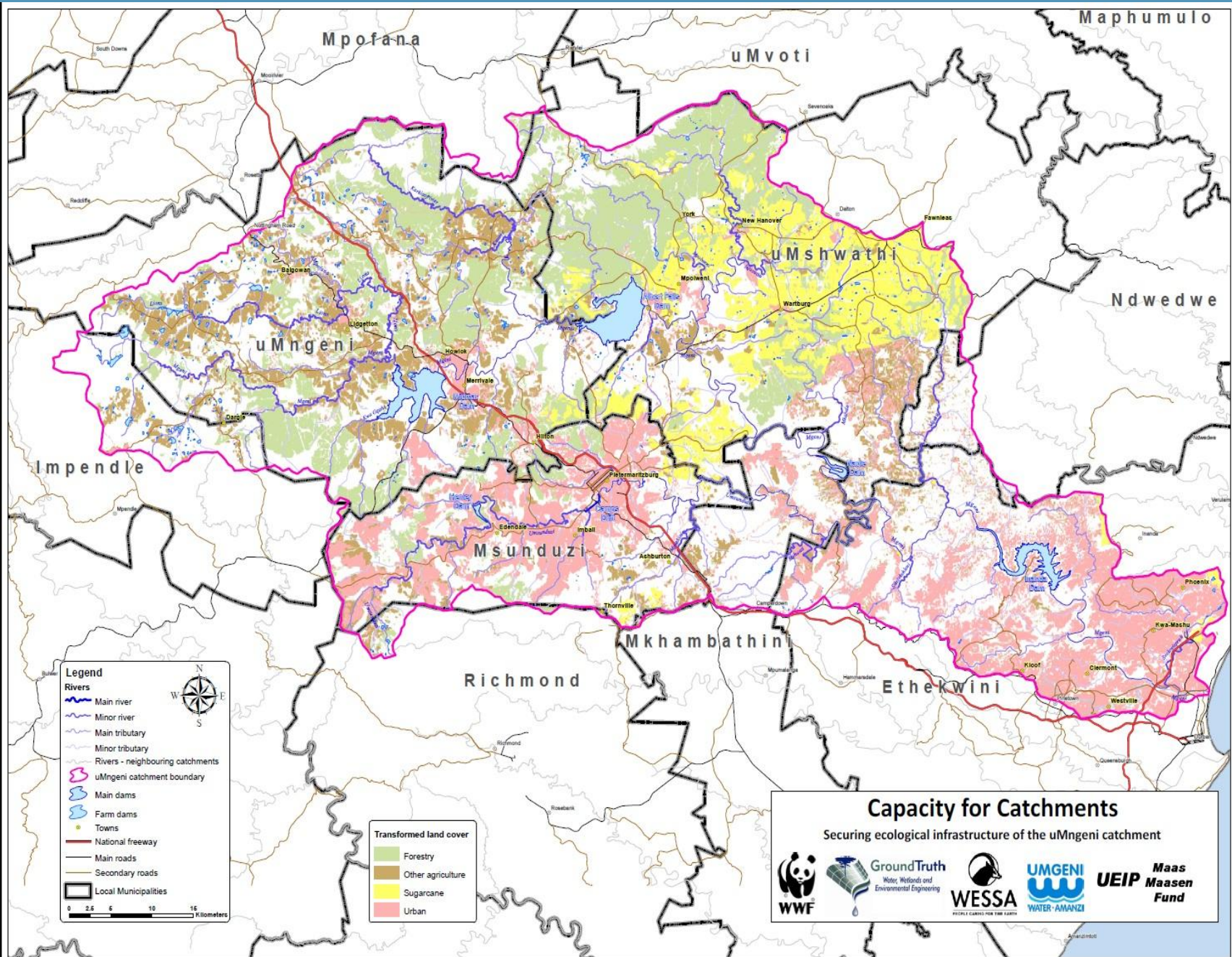
NOTE: Transition, Buffer and Core Conservation Areas are the three zones designated within a Biosphere Reserve

Source is taken as point of exit from Midmar dam which is upstream from the town of Howick.



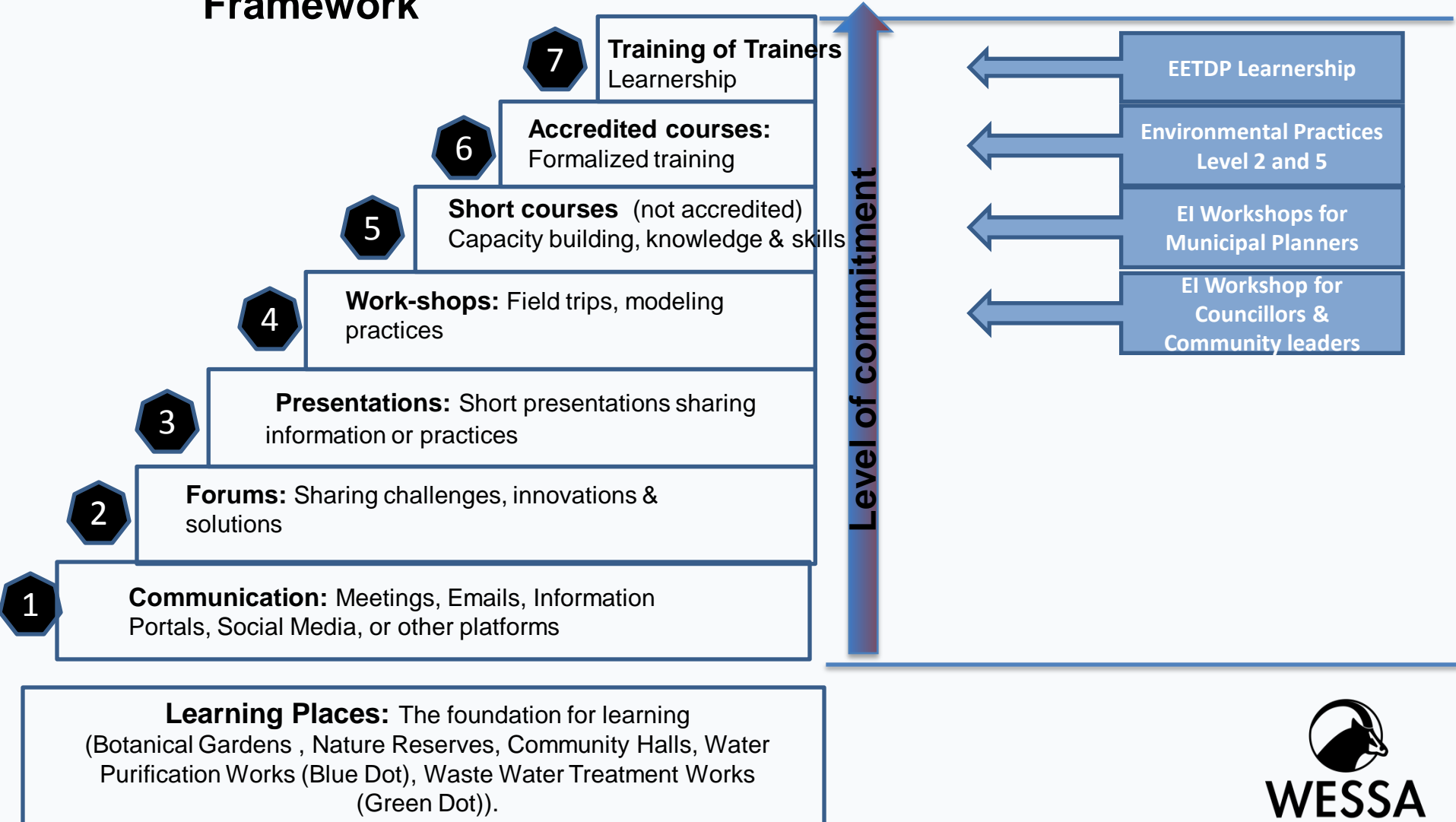
Power map of key individuals within the Umgeni Catchment, representing the relationship between their influence and their understanding and support of the concept of ecological infrastructure





The “Stepping up” Framework

Activity

















A high-speed photograph of a water droplet hitting a surface, creating a complex splash with multiple droplets and ripples. The water is a vibrant blue, and the background is a lighter blue gradient. The text 'Thank you' is centered over the splash in a bold, black, sans-serif font.

Thank you