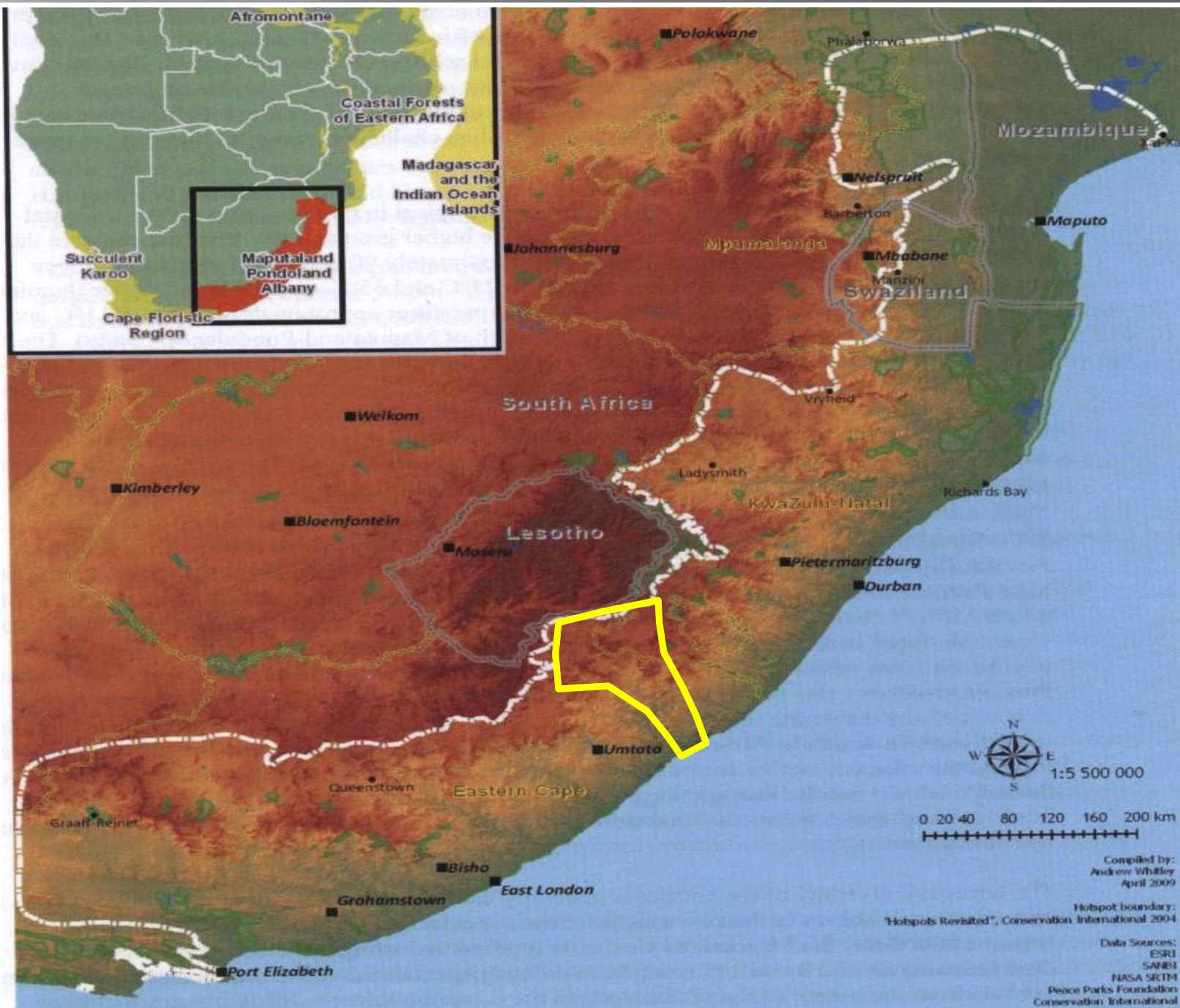


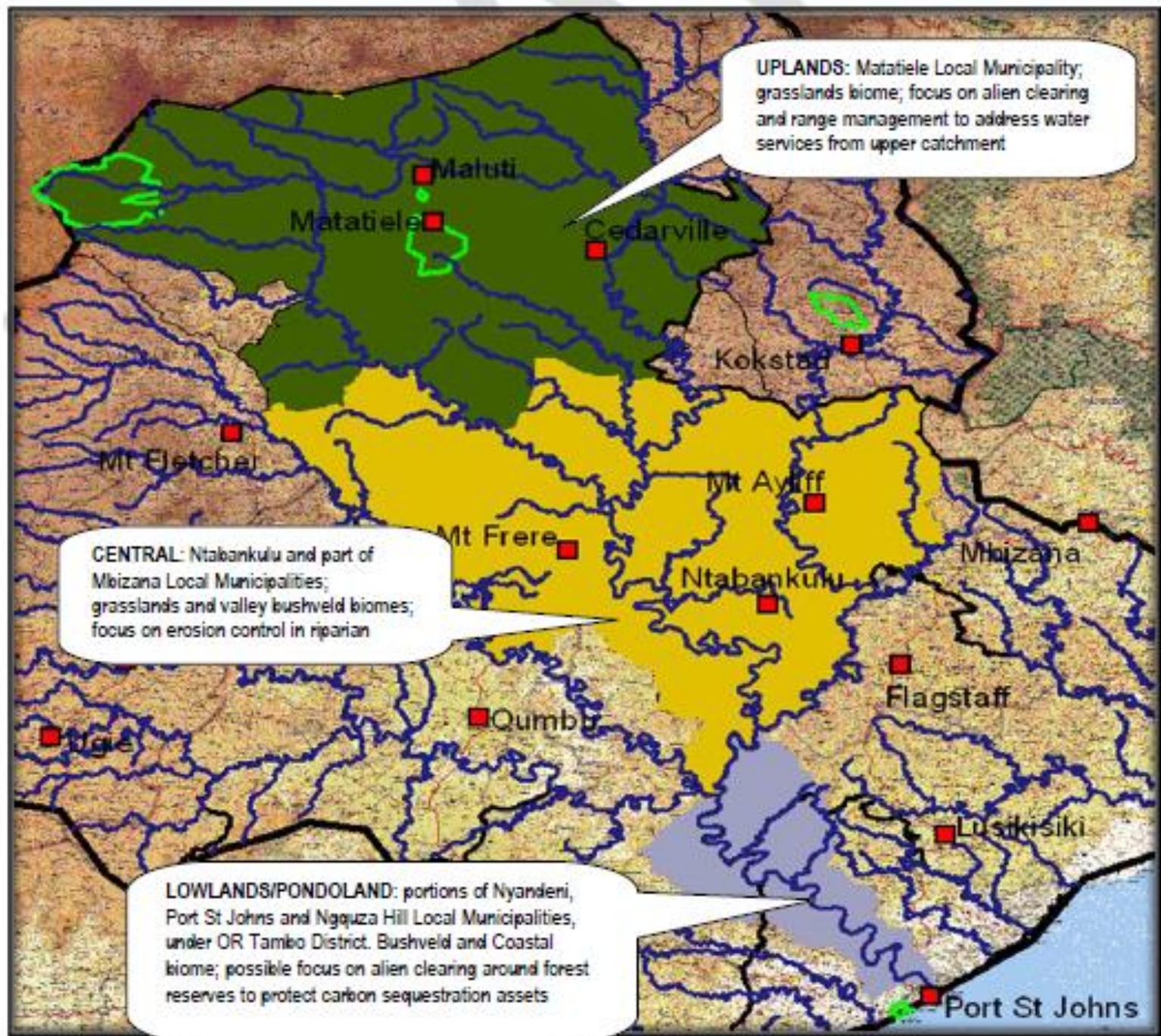
UCPP (UMZIMVUBU CATCHMENT PARTNERSHIP PROGRAMME

Sinegugu Zukulu



CRITICAL ECOSYSTEM
PARTNERSHIP FUND





UCPP Vision:

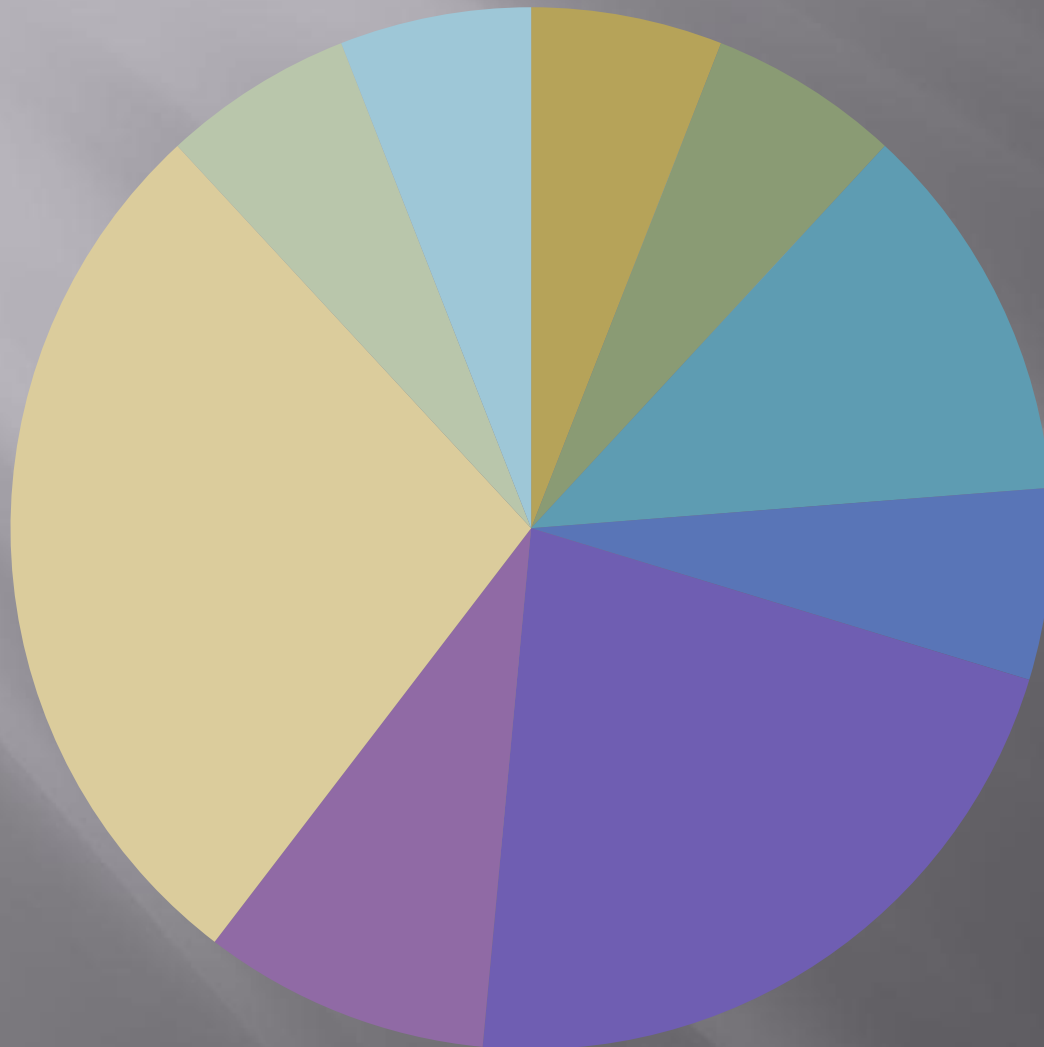
to build stewardship capacity among community groups in the upper Umzimvubu catchment, through establishing replicable demonstration projects which restore watershed functions, and to position these groups as potential sellers of such services to be integrated into the conservation economy.



**34 MEMBERS: 35% GOVERNANCE
ORGANISATIONS, 65% CIVIL**



PARTNERSHIP COMPOSITION



- 2 TRADITIONAL AUTHORITIES 6%
- 2 MUNICIPALITIES 6%
- 4 STATE DEPARTMENTS 12%
- 2 PARASTATALS 6%
- 7 NATIONAL NGOS 22%
- 3 REGIONAL NGOS 9%
- 10 LOCAL CBOs 28%
- 2 SMALL CONSULTANTS 6%
- 2 UNIVERSITIES 6%

WHAT ARE DIFFERENT ORGANISATIONS DOING?



Memorandum of understanding (Mou)

- ▣ UCPP aims to conserve the full extent of uMzimvubu river system, from source to sea through sustainable restoration and maintenance of the catchment area in a manner that supports economic development and job creation for local people and enhances flow of benefits from ecosystems goods and services to people and nature.



CRITICAL

ECOSYSTEM

PARTNERSHIP FUND

Catchment strategies: 5 & 20

- Ecorangers: CSA, ERS, LIMA, EWT
- Alien clearing: DEA-NRM, ERS, LIMA, CSA, IDT, FIREWISE
- Fire management: MDTP, ANDM, WoF, Fas, FIREWISE
- Rangelands management: LIMA, CSA, ERS
- Water management: DWA, EWT, ERS, CSA

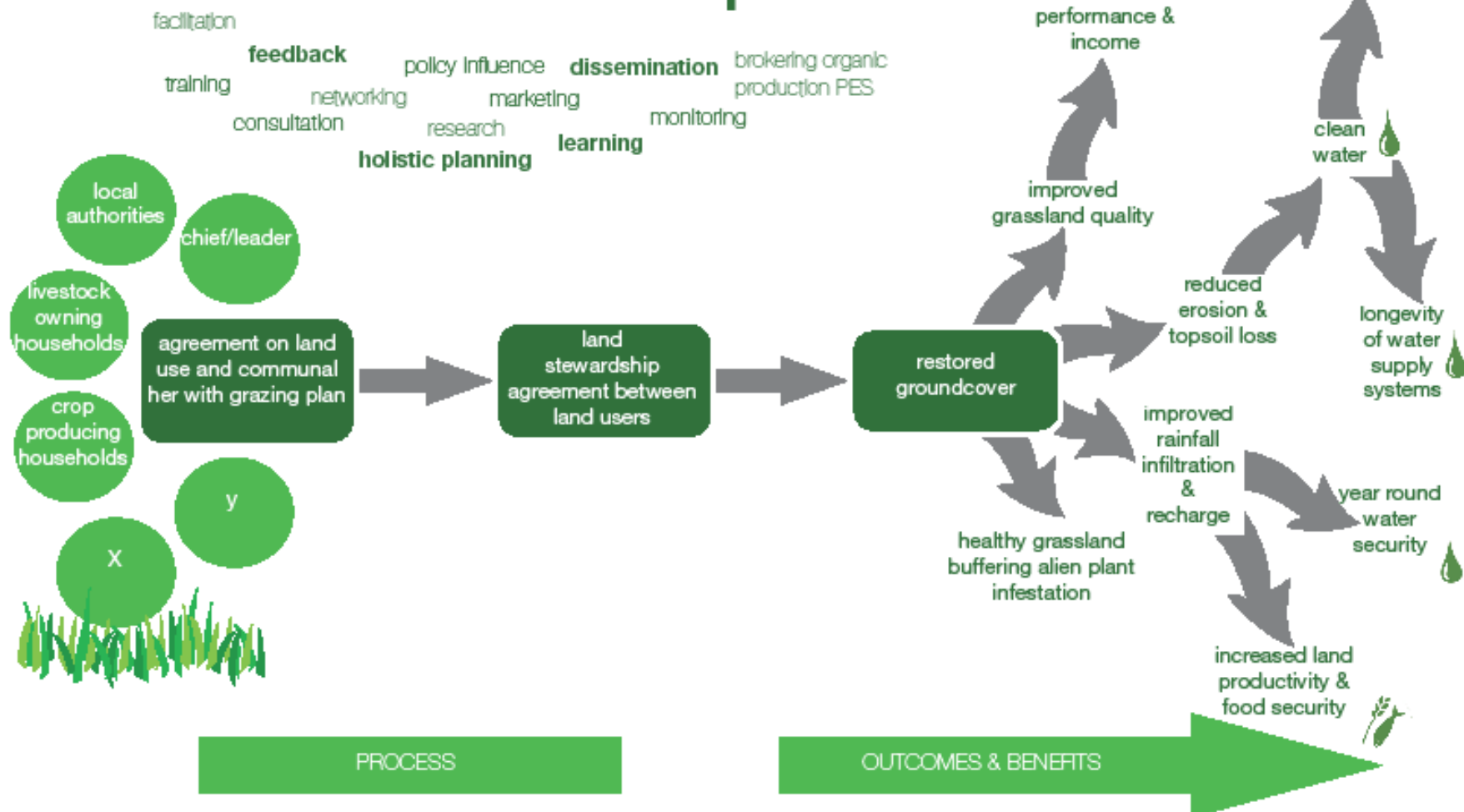


What are partners doing?

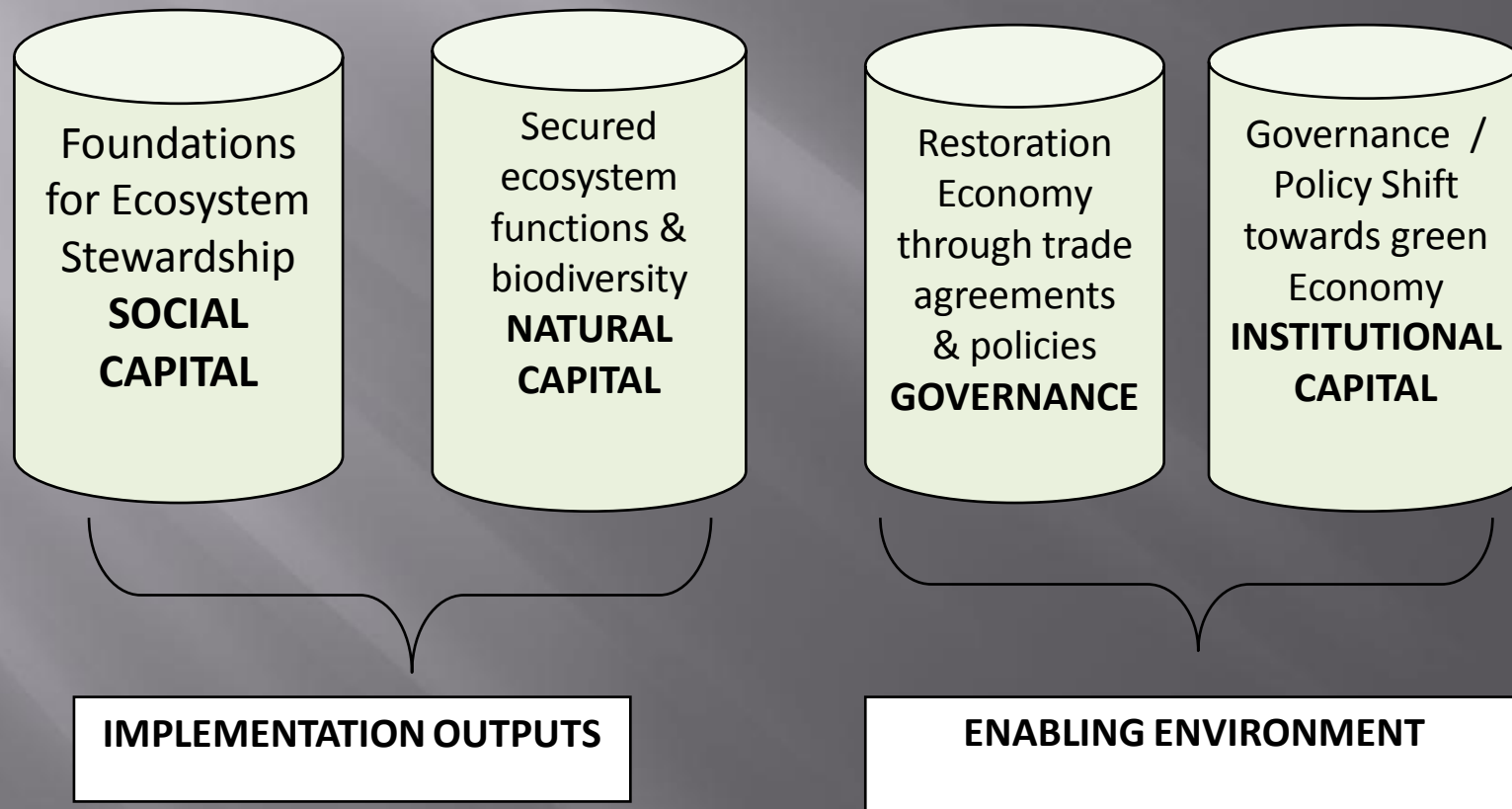
- Environmental education:
MDTP, ECPTA, DEDEAT, ERS, CSA
- HCA: WESSA, EWT, CSA, ERS
- Climate Change: ANDM, CSA, LM_s, WSU
- Policy: SANBI, DAFF, CSA, DEA
- Research: UKZN, WSU, SU, ERS, CSA
- Landscape Tools: INR
- Stewardship:
EWT, ECPTA, ERS, CSA, LIMA, MLM



catchment restoration & water security through stewardship



**GOAL: HEALTHY ECOSYSTEM FUNCTION OF UMZIMVUBU CATCHMENT
PROVIDING SERVICES AND BENEFITTING PEOPLE**





PARTNERS' PROFILE

- ▣ TOTAL GREEN ECONOMY SPEND > R50 MILLION IN 3 YEARS IN SUB-REGION
- ▣ MORE THAN 30 PERMANENT STAFF IN SUB-REGION, 70% HAVE LOCAL OFFICE
- ▣ EMPLOYING OVER 800 PEOPLE IN SHORT TERM 'GREEN JOBS' (DEA LUI, CEPF GRANTS, CWP & OTHERS)
- ▣ TACKLING OVER 800 ha OF ALIEN INFESTATION AND 5000 HA GRAZING LAND
- ▣ 4 M.Sc. AND 4 B.Sc.Hons STUDENTS



“ALLIANCE ‘PRODUCTS’”

- ▣ QUARTERLY ‘FORMAL’ PARTNERSHIP EXCHANGES WITH FOCAL TOPICS:
fire, water, M&E, alien plants etc as sharing platform
- ▣ COLLABORATIVE CO-IMPLEMENTING
- ▣ REGULAR SITE EXCHANGES & PRACTICAL PROBLEM TACKLING
- ▣ FORMAL SUBMISSIONS TO ESTABLISHMENT OF NEW UMZIMVUBU-TSITSIKAMMA CMA
- ▣ STAKEHOLDER / PUBLIC PARTICIPATION REPRESENTATION IN MINING AND WINDFARM APPLICATIONS
- ▣ INFORMATION EXCHANGE & DATABASE



DEVELOPING BEST PRACTISE

LEARNING EXCHANGE WORKSHOPS & PRESENTATIONS INCLUDE:

- ▣ FIRE MANAGEMENT IN GRASSLANDS
- ▣ ALIEN PLANT MANAGEMENT
- ▣ ENVIRONMENTAL AWARENESS & OUTREACH
- ▣ ECORANGER 'MODEL' FOR COMMUNITY CUSTODIANSHIP THRU MABOELLA
- ▣ AQUATIC BASELINES & ECOSYSTEM MONITORING
- ▣ INCENTIVES (incl TRAINING, EFFECTIVE EPWP PROGRAMMES, POST-PROJECT LIVELIHOODS, GREEN ECONOMY OPPORTUNITIES, ETC)



UMZIMVUBU SOURCE2SEA ECO-CATCHMENT INITIATIVE



*Understanding the potential of one of
SA's last (mostly?) natural river systems*




www.umzimvubu.org

Google x About | Umzimvubu x

umzimvubu.wordpress.com/about/

Umzimvubu Follow

New P



Umzimvubu

catchment conservation partnership

Search...

RECENT POSTS

Welcome to the UMZIMVUBU catchment partnership

ARCHIVES

September 2014

ABOUT

The Umzimvubu Catchment Partnership Programme aims to conserve the full extent of the Umzimvubu River system (from source to sea) through the sustainable restoration and maintenance of the catchment area in a manner that supports economic development and job creation for local people and enhances flow of benefits from ecosystem goods and services to people and nature.

HOME ABOUT PADDLING PROJECTS GIS DATA PARTNERS


CURRENT ACTIVITIES

RESTORATION RESEARCH

UCPP MEETING RECORDS

WATER

GALLERY

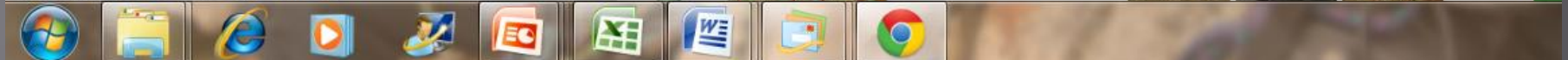


UMZIMVUBU CATCHMENT CONSERVATION CORRIDOR WITHIN RIVER CONSERVATION STATUS IN SOUTH AFRICA

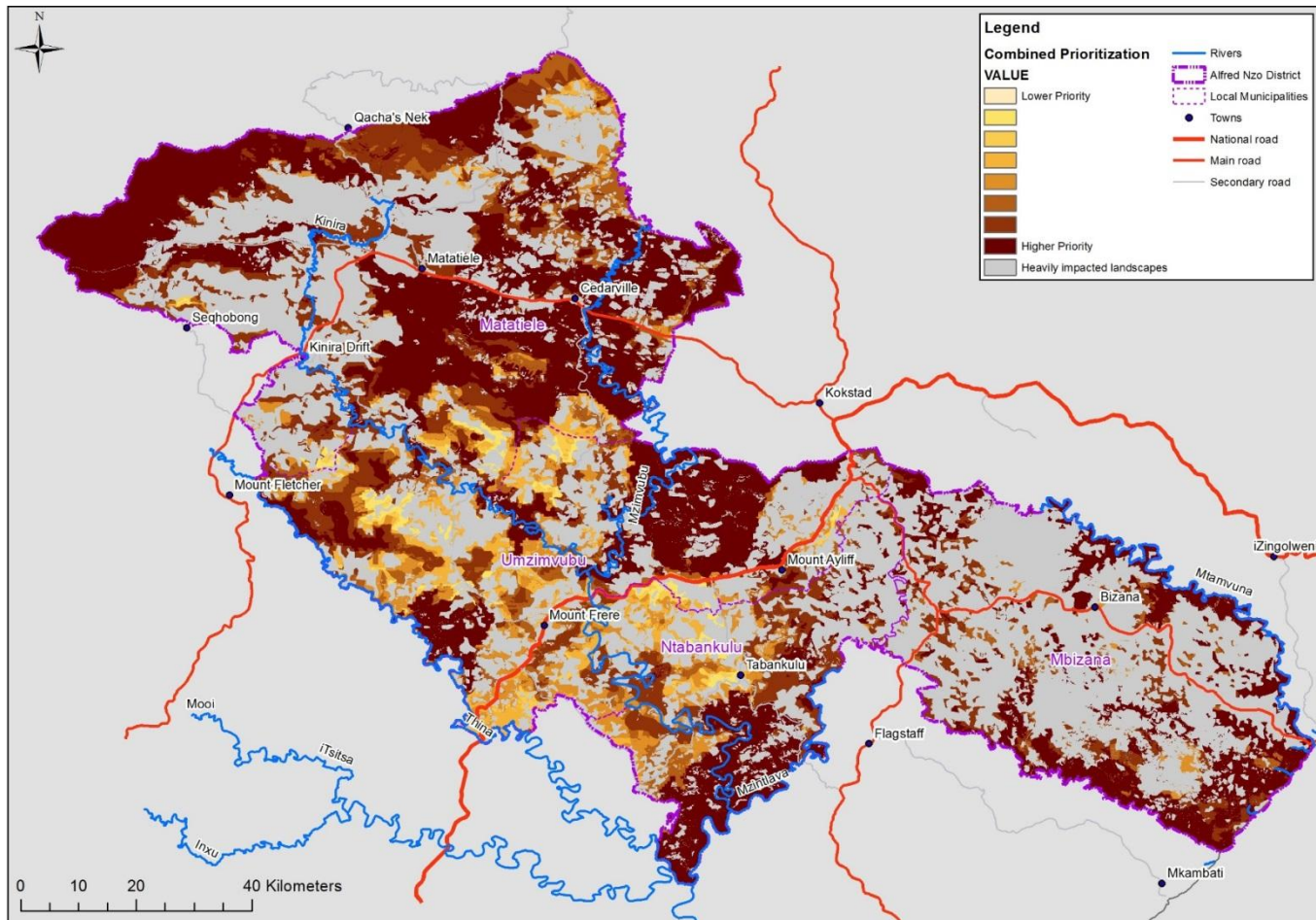
LEGEND

- Umzimvubu 5 year flood area
- Umzimvubu 20 year catchment
- Umzimvubu 100 year catchment

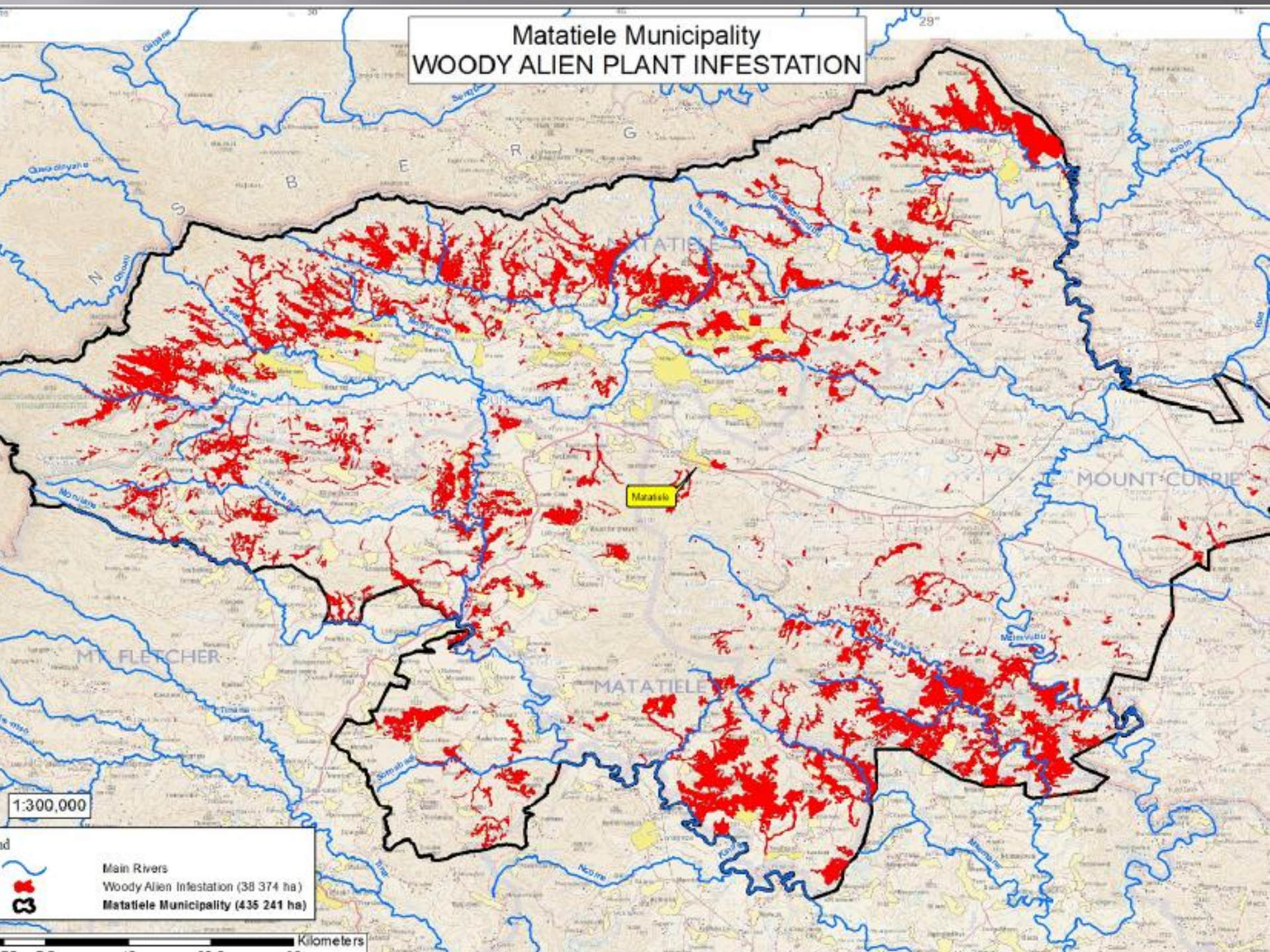
umzimvubu.wordpress.com/projects/



Combined prioritization



Matatiele Municipality WOODY ALIEN PLANT INFESTATION

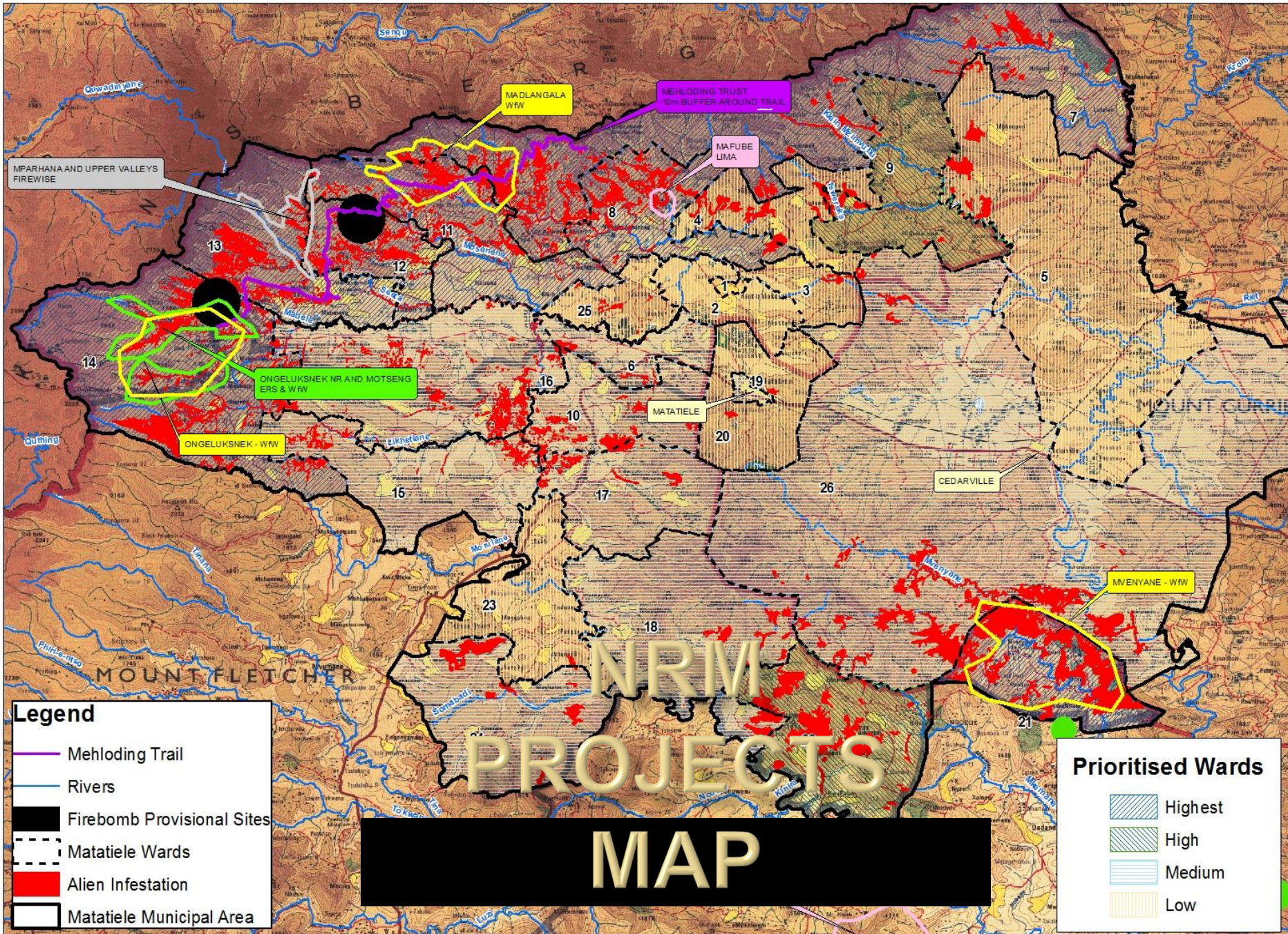


1:300,000

Legend

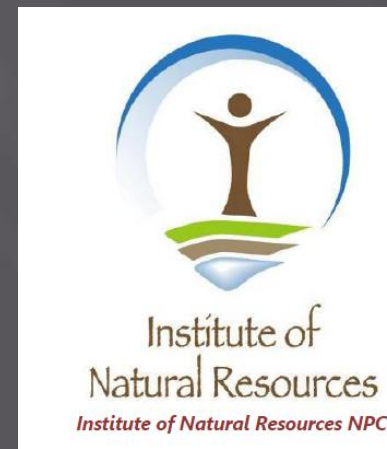
- Main Rivers
- Woody Alien Infestation (38 374 ha)
- Matatiele Municipality (435 241 ha)

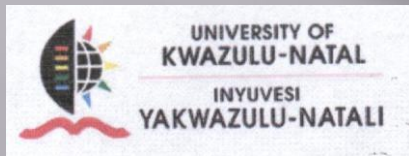
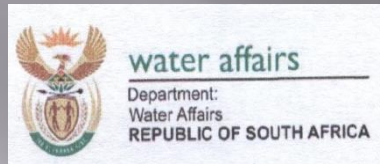
Kilometers



INR support

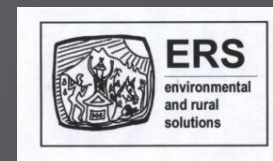
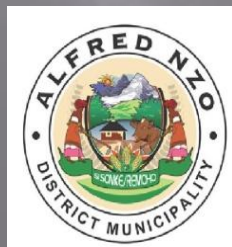
- SUPPORTING THE SELECTION AND DESIGN OF ECONOMIC INSTRUMENTS TO INCENTIVISE IMPROVED NATURAL RESOURCES MANAGEMENT IN TARGET AREAS OF THE UMZIMVUBU CATCHMENT. CEPF
- Catchment/landscape planning gaming approach.





“It is useful to view sustainability as an emergent property of stakeholder interaction, and not just a technical property of the ecosystem”

Dr. Mark Dent, UKZN



THANK YOU!



CRITICAL ECOSYSTEM
PARTNERSHIP FUND



environmental affairs

Department:
Environmental Affairs
REPUBLIC OF SOUTH AFRICA