

ENVIRONMENTAL COMPLIANCE OFFICERS

EXPERIENCES OF AN ECO IN MATATIELE.....



Spillages and mixing on the grass



Concrete transport by wheelbarrow results in accidental spills



Water contamination

Breaking the concrete using Jack hammers



Tightening the steel bar



Weir fill up of silt



River crossing

Not diverting the water before excavation



After restoration of the river bed



Wetland degradation

Trenching in the wetland



Stream blocking



Excavation

Up rooting aloe



Separating top soil and subsoil



TRENCHING & BACKFILLING



Soil erosion no top soil



Scour needs protection

Scour valve



Course erosion



EMP guidelines not followed

**Trench left open for 2-3 weeks.
Trenches not to be left open for
more than two days.**



Trench wall collapsed



Planting trees



Unauthorized
activities

Two projects in one area

Water supply with ECO



Road without ECO

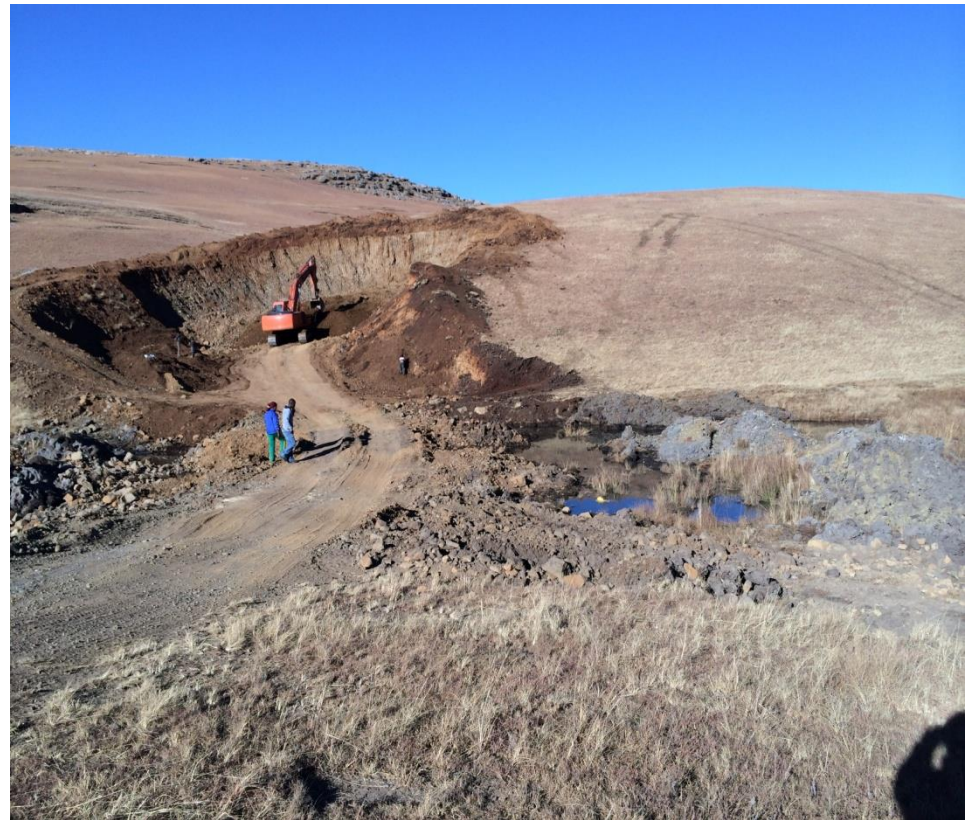


Illegal borrow pit

Road to the borrow pit and wide view of the pit



Blocking off wetland to make road to borrow pit



Unauthorized road to the reservoir

13M wide



1,4KM long

