

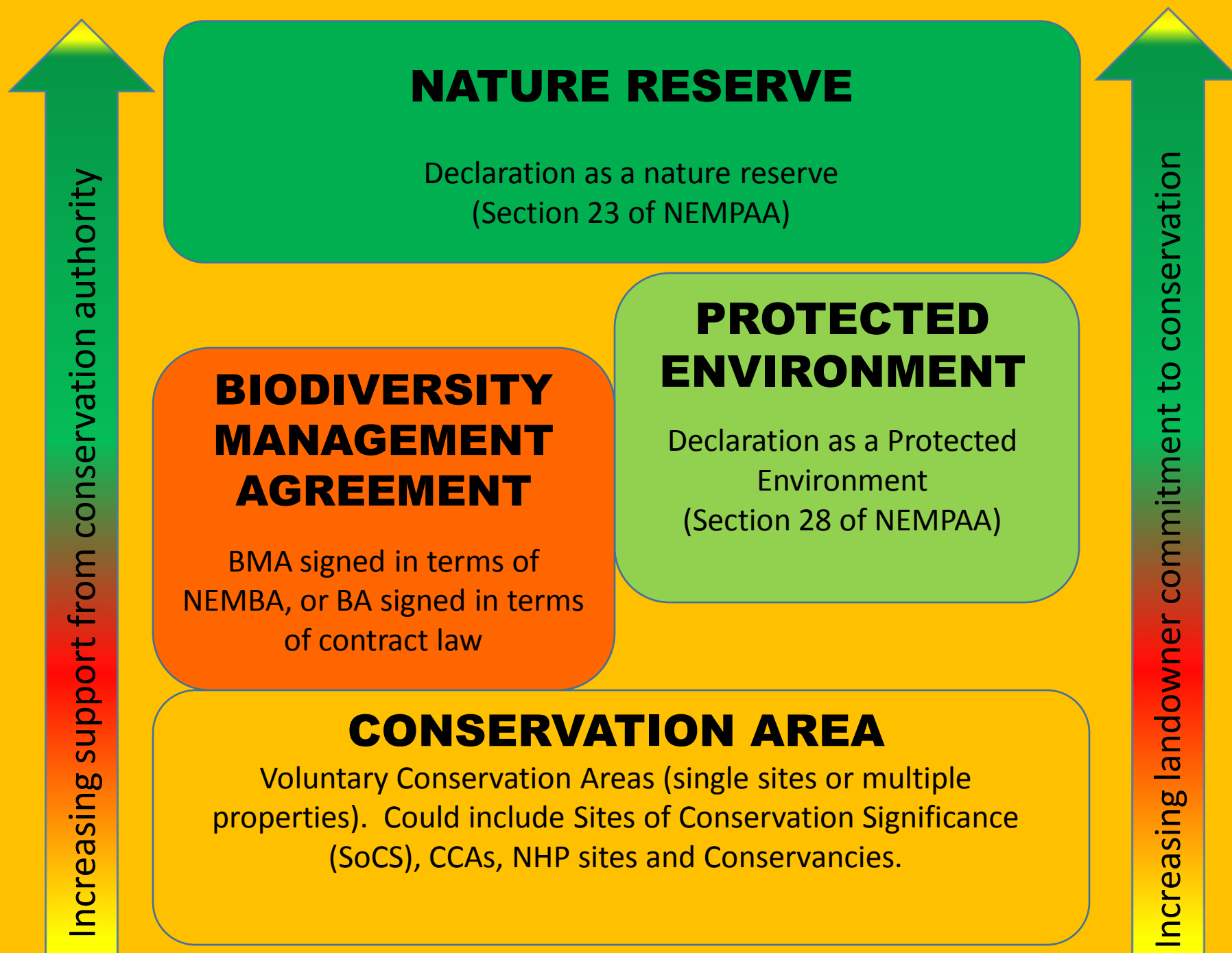


# The Cedarville Protected Environment & Other Activities

Presentation to UCPP by EWT

November 2016

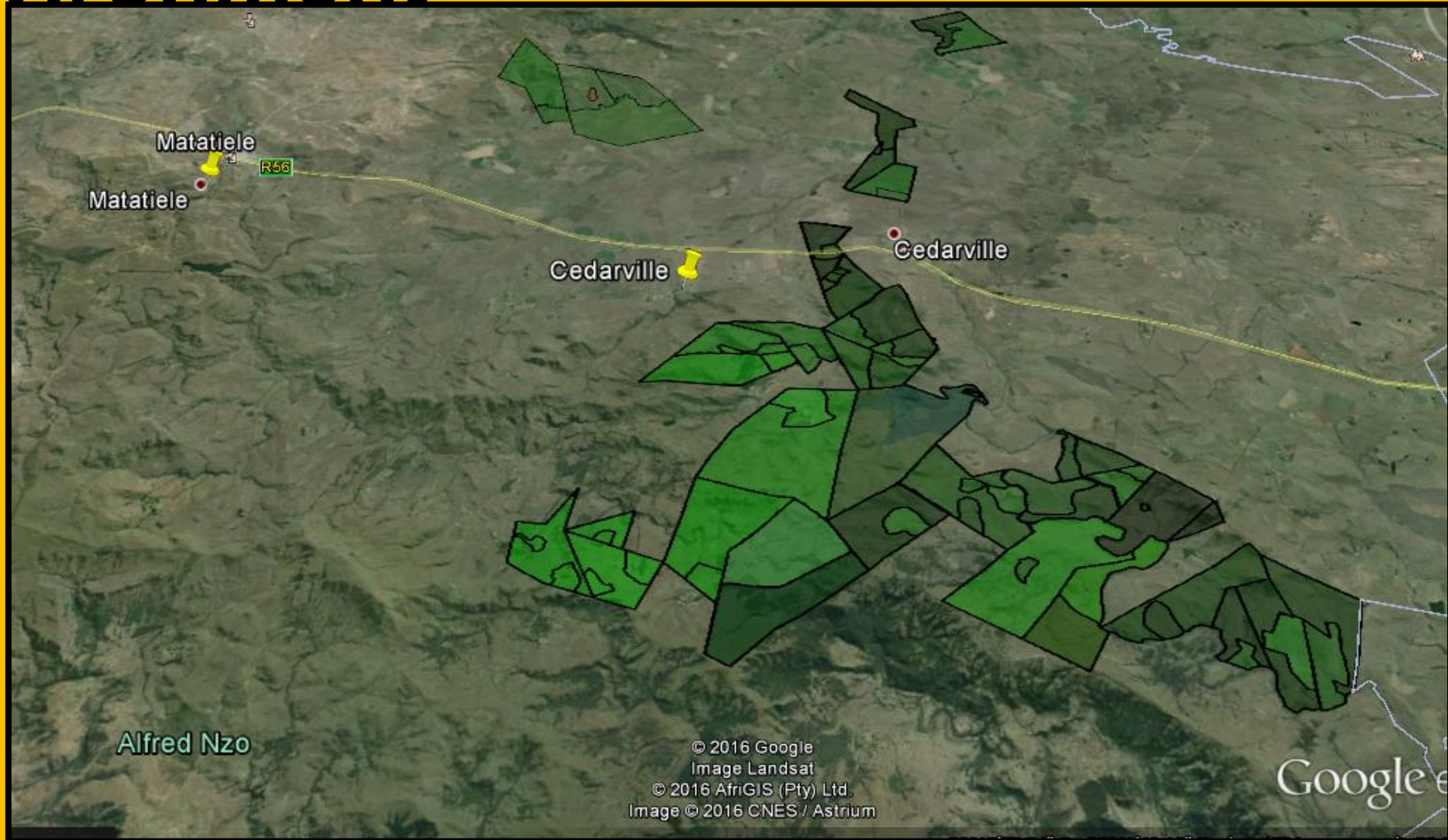




# What is a Protected Environment ?

- It is a typically agricultural landscape that has unique biodiversity features.
- The aim of the category is to allow for farming and grazing but have specific management plans in place for untransformed areas.
- The main aim of the category is to stop further transformation.
- Typically the land will be zoned by the landowner and conservationists in respect of high use and conservation areas.
- The BSP does not result in the suspension of any other legislation.
- The category sticks to the property and can be transferred from one owner to another.
- Category provides protection over the whole property.
- The category has a life span of 30 years to in perpetuity.

# Map of the Cedarville Protected Environment



# Fast Facts

- CPE is 15 563 ha in size.
- 28 Properties and 14 owners.
- Home to several species of concern - Oribi, Grey Crowned Crane, Blue Crane, Ground Hornbill.
- Has high habitat heterogeneity – grasslands, wetlands, rocky outcrops, forest.
- It is the 3<sup>rd</sup> biggest PE in the Eastern Cape
- Contains several very poorly protected habitat types eg. Mabela Sandy Grassland.
- Contains fossils, San painting and Stone age tool sites.
- CPE Declared / Gazetted in July 2015.



# Reasons for declaring the CPE

1. Significant conservation contribution of previously unprotected or under-represented vegetation types.
2. Large number of threatened and endangered species present.
3. Protected Areas in this part of the Eastern Cape are sparse.
4. Further opportunities for extension of areas and consolidation of the Cederberg Cluster with the Matatiele Nature Reserve.
5. Protection of significant cultural and archaeological artefacts.
6. Unique high altitude peat wetland on The Meads



# Threats to the CPE

- Mining
- Poaching
- Erosion
- Bush encroachment
- Loss of paleontological artifacts
- Alien plants
- Illegal grazing
- Degradation on neighboring properties

# Protected Environment Process

- Completion of management plans
- Implementation of management plans
- Creating a enabling environment for landowners
- Exploring expansion into rural areas bordering private land



# Other Activities.

- Working with ERS to expand protected areas concept into Ward 7 / Mzongwana
- Working with ERS & CSA to expand protected areas concept into the Ongeluksnek wetland areas
- Monitoring cranes and Wetlands in the UCPP domain.
- Monitoring Ecosystem Goods and services in areas where we / our partners are working.
- Looking at opportunities to enhance the conservation economy.
- ECR trials on bush encroachment
- Completing CPEC management plan