



# **Biodiversity Stewardship Programme:** Improving Management Effectiveness of the Protected Area Network.

UCPP 19<sup>th</sup> Quarterly Meeting

11 April 2018

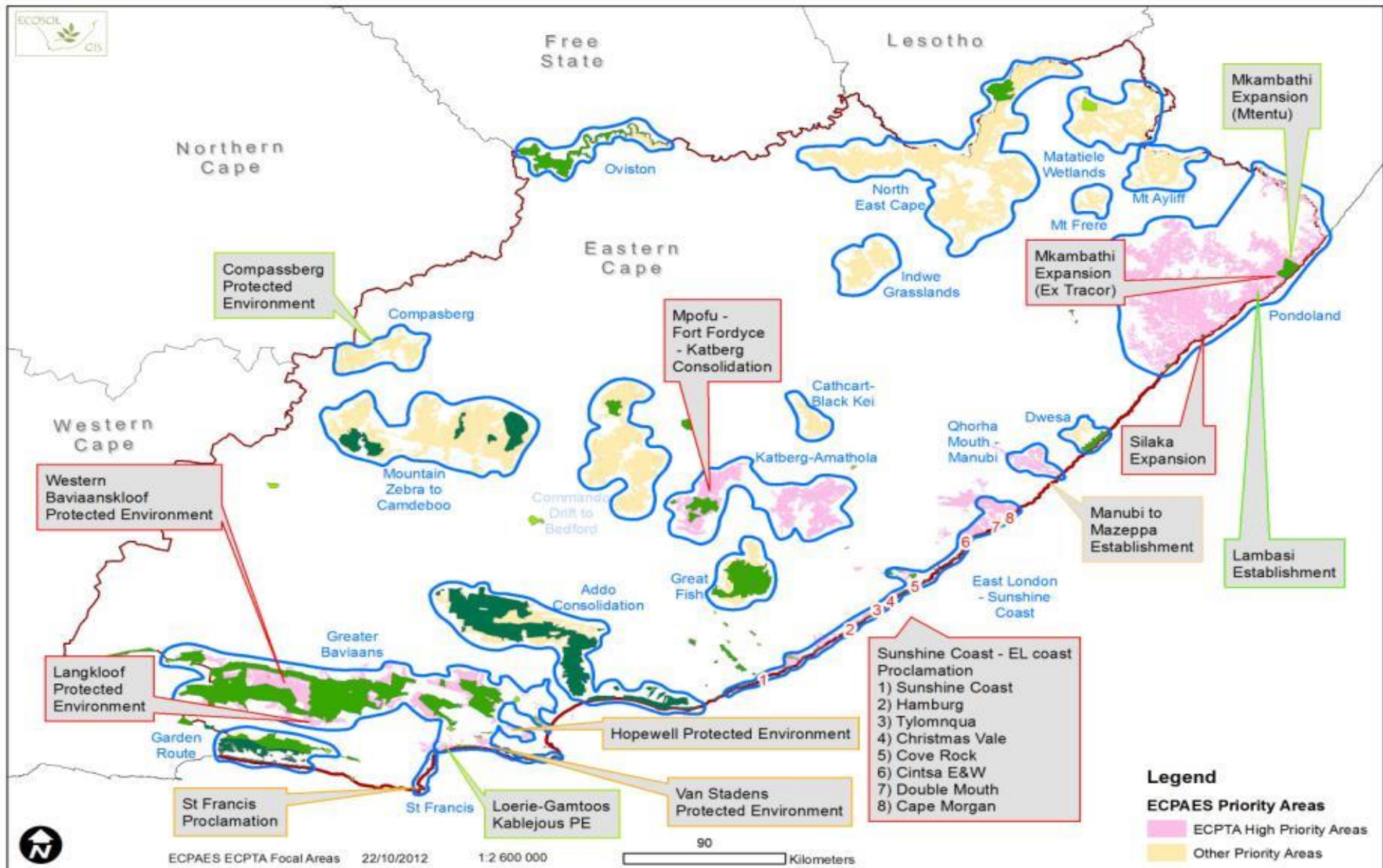
Thembanani Nsibande

**ADVENTURE PROVINCE**  
*Eastern Cape*  
PARKS & TOURISM AGENCY

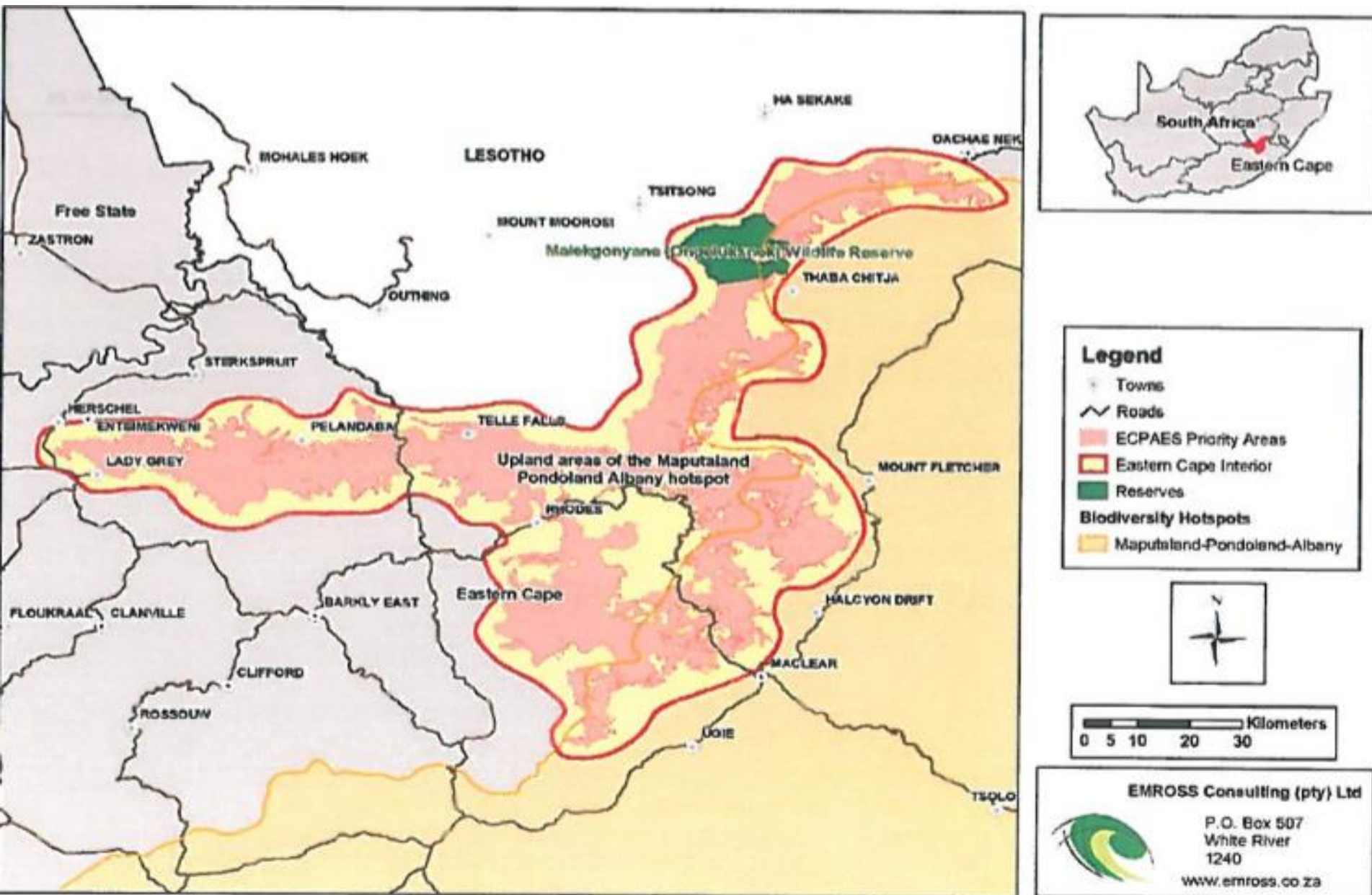




# Eastern Cape Protected Areas Expansion Strategy 2012



# North Eastern Cape Grasslands Site



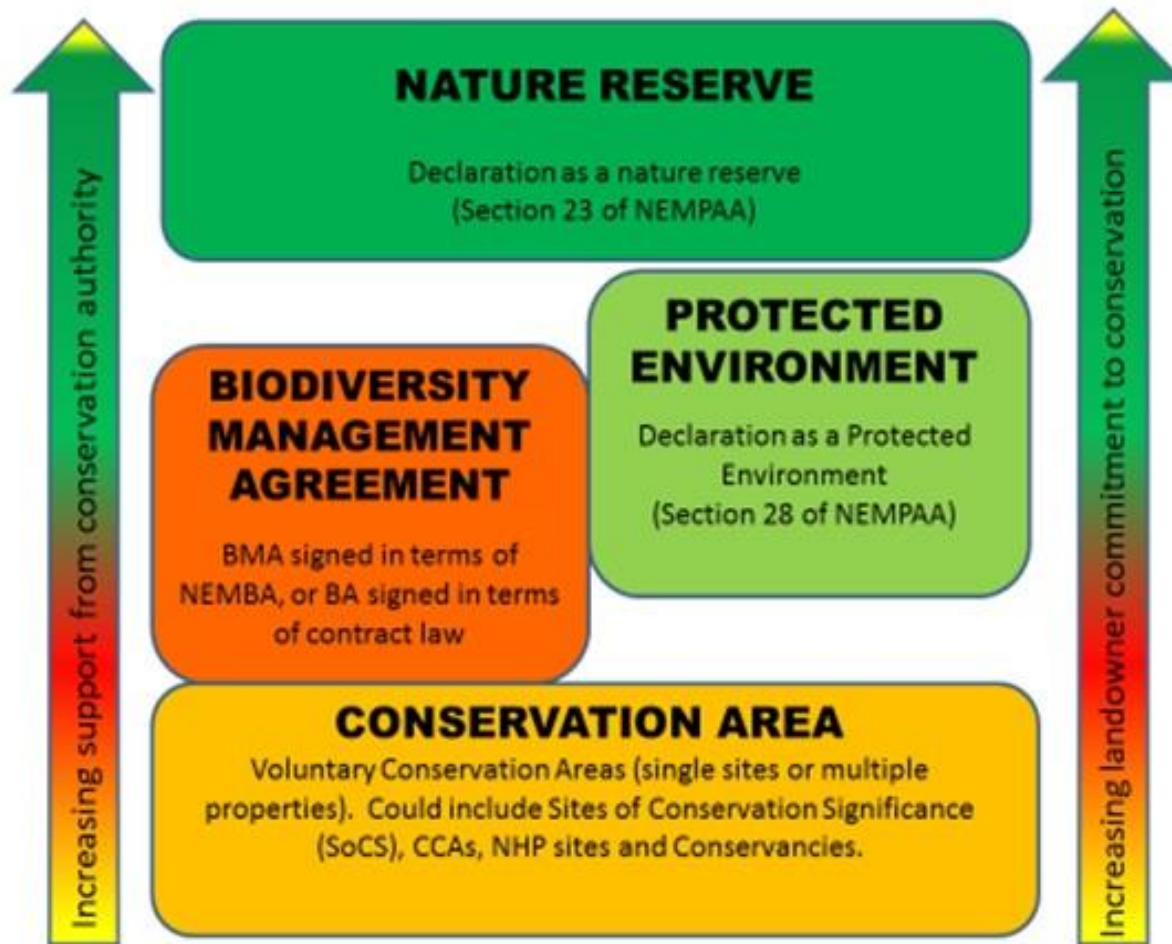
# National Protected Area Expansion Strategy (NPAES 2008)

BIOME	Biome Area* ( ha)	Protected Areas (2016)		20-Year PA Target (%)
		ha	%	
<b>Albany Thicket</b>	2 912 755	245 825	8%	10%
<b>Azonal Vegetation</b>	2 898 160	263 074	9%	14%
<b>Desert</b>	716 565	181 031	25%	18%
<b>Forests</b>	471 452	158 467	34%	23%
<b>Fynbos</b>	8 394 417	1 777 028	21%	15%
<b>Grassland</b>	35 459 351	1 188 084	3%	14%
<b>Indian Ocean Coastal Belt</b>	1 428 197	77 410	5%	14%
<b>Nama-Karoo</b>	24 828 007	244 543	1%	11%
<b>Savanna</b>	41 254 462	5 117 924	12%	10%
<b>Succulent Karoo</b>	8 328 397	783 661	9%	12%





# Categories of Biodiversity Stewardship Programme



# Categories of SANParks GEF-5 Biodiversity Stewardship Programme

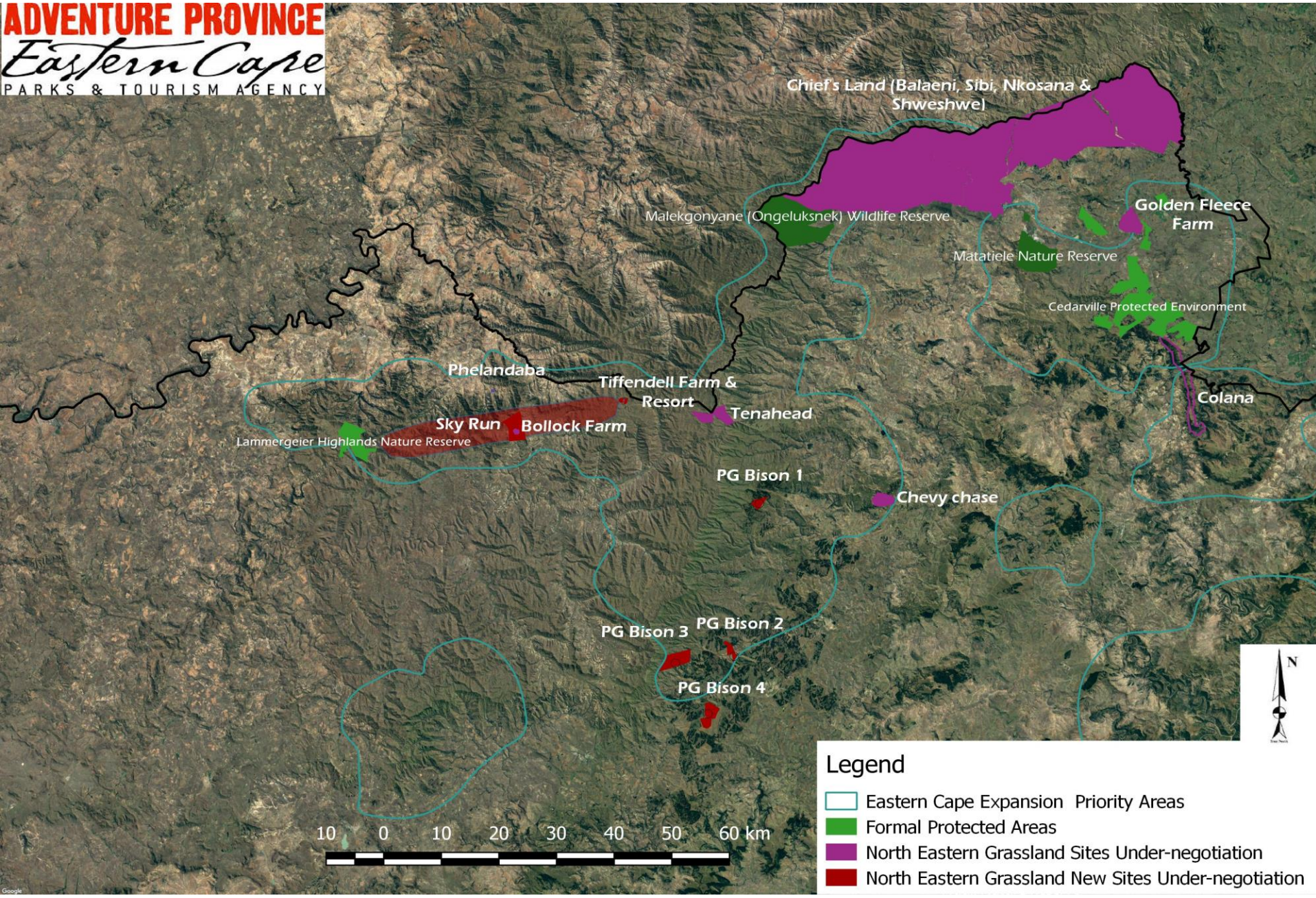
Type of agreement	Legal mechanism	Typical contract length	Binding on the property	Binding on the landowner
<b>Nature Reserve</b>	Protected Areas Act 57 of 2003	50–99 years or in perpetuity	Protected area declaration and title deed restriction	Contract agreement
<b>Protected Environment</b>	Protected Areas Act 57 of 2003	Minimum of 30 years	Protected area declaration	Contract agreement





# NE Grasslands Sites Under Negotiations

**ADVENTURE PROVINCE**  
*Eastern Cape*  
PARKS & TOURISM AGENCY

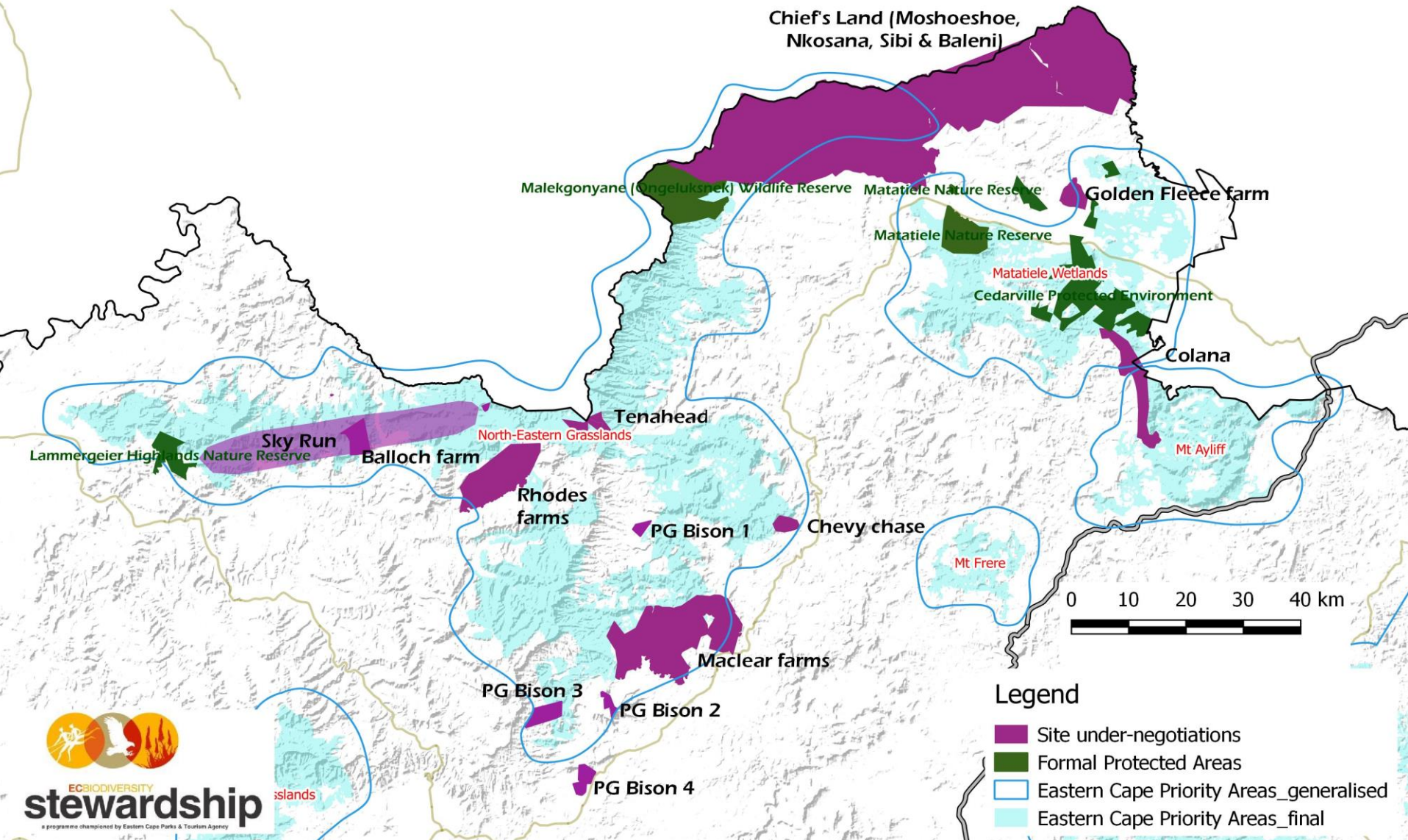




# NE Grasslands Sites Under Negotiations

**ADVENTURE PROVINCE**  
*Eastern Cape*  
PARKS & TOURISM AGENCY

## North - Eastern Grasslands: 2012 Priority Areas



**ECOSYSTEM DIVERSITY**  
**stewardship**  
a programme championed by Eastern Cape Parks & Tourism Agency



# Sites that have been Reviewed

Site Name	Location	Owner	Total Ha
Golden Fleece Farm	Cedarville	Private LO	406 ha
Balloch Farm	Barkly East	Private LO	5000 ha

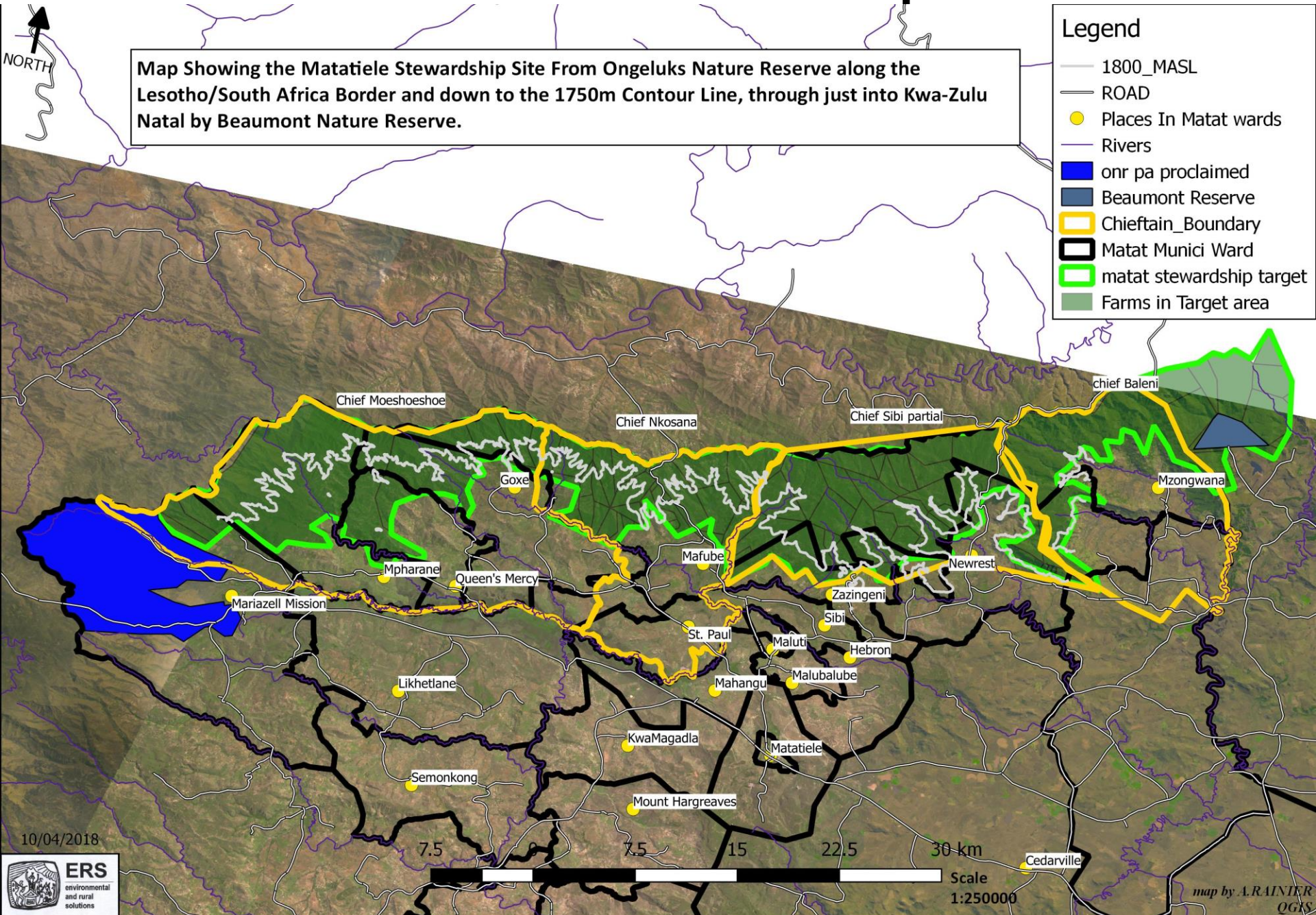


# Matatiele Watershed Stewardship Initiative

Map Showing the Matatiele Stewardship Site From Ongeluks Nature Reserve along the Lesotho/South Africa Border and down to the 1750m Contour Line, through just into Kwa-Zulu Natal by Beaumont Nature Reserve.

## Legend

- 1800\_MASL
- ROAD
- Places In Matat wards
- Rivers
- onr pa proclaimed
- Beaumont Reserve
- Chieftain\_Boundary
- Matat Munici Ward
- matat stewardship target
- Farms in Target area



10/04/2018



# Matatiele Watershed Stewardship Initiative

## Way Forward

- Chiefs briefing meeting on the 16<sup>th</sup> of April 2018.
- Proof of Land Ownership Meeting with the Department of Land Affairs and Public Works on the 19<sup>th</sup> of April 2018.
- Presentation to Standing Committees.
- Conducting Biodiversity Site Assessment
- Biodiversity Stewardship Site Panel Review.
- Management Authority Appointment.



# Partners

State	NGO's	Parastatal	Other
DEA	WESSA	SANBI	Traditional authorities
DEDEAT	EWT	SANParks	Private land owners
DAFF	CSA	CapeNature	Conservancy
Municipalities	ERS		Consultants
DRDALR	Conservation Outcomes		
	WWF		
	BirdLife		







*Thank you!*

**ADVENTURE PROVINCE**  
*Eastern Cape*  
PARKS & TOURISM AGENCY

