

Establishing the CREW Eastern Cape Node: towards implementation of the National Plant Conservation Strategy

VATHISWA ZIKISHE

UCPP QUARTERLY MEETING
PORT ST JOHNS, 31ST JULY 2019



CONTENTS

- A brief overview of the Plant Conservation strategy
- Specific targets towards achievements of the strategy
 - Target 3: Information
 - Target 5: Important plant areas
- Highlights of the previous field season
- Reflection on the work done so far....

Target 1: Online Flora

Outcomes: e-Flora produced that includes descriptions, distribution information and images for taxa.

Target 2: Red List

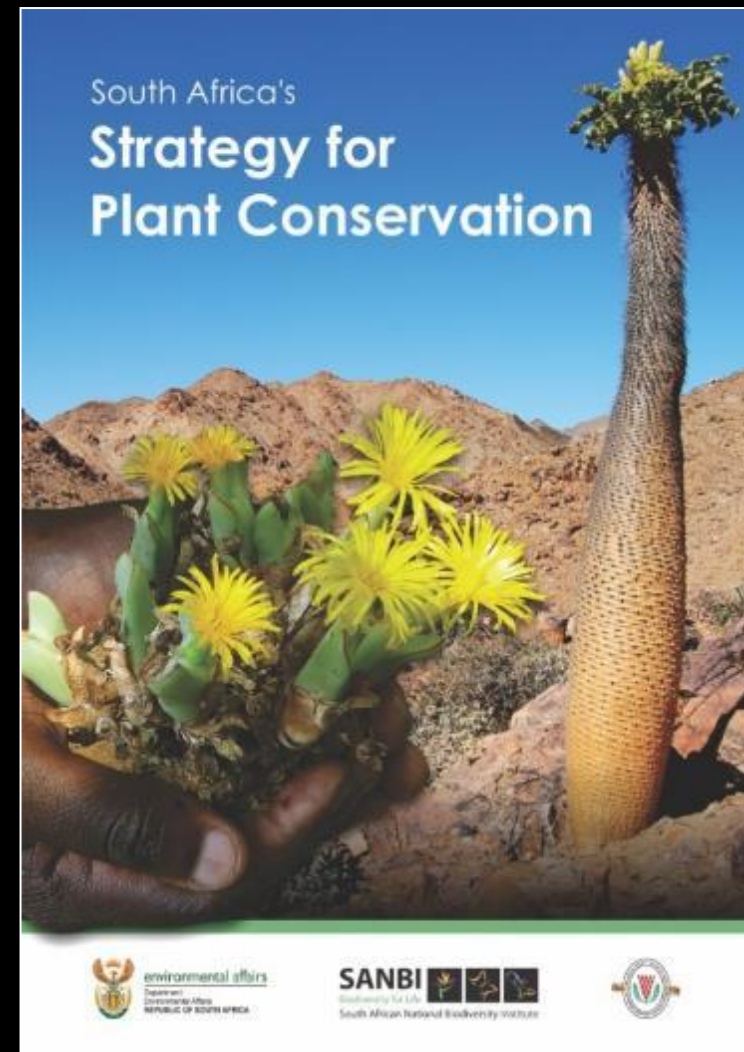
Outcomes: Species from priority areas under imminent threat reassessed.

Target 3: Information

Outcomes: Under-sampled areas the focus for plant collecting

Target 5: Important plant areas

Outcomes: Important areas for plant diversity in South Africa identified based on botanical richness and endemism patterns.



<http://biodiversityadvisor.sanbi.org/planning-and-assessment/plant-conservation-strategy/>

Each target includes:

- Background on the work done to date
- Prioritise key areas of work needed
- 2-3 major outcomes identified for 2020
- Work plan with actions, timeframes, responsible stakeholders

Target 11 Outcomes for 2020:

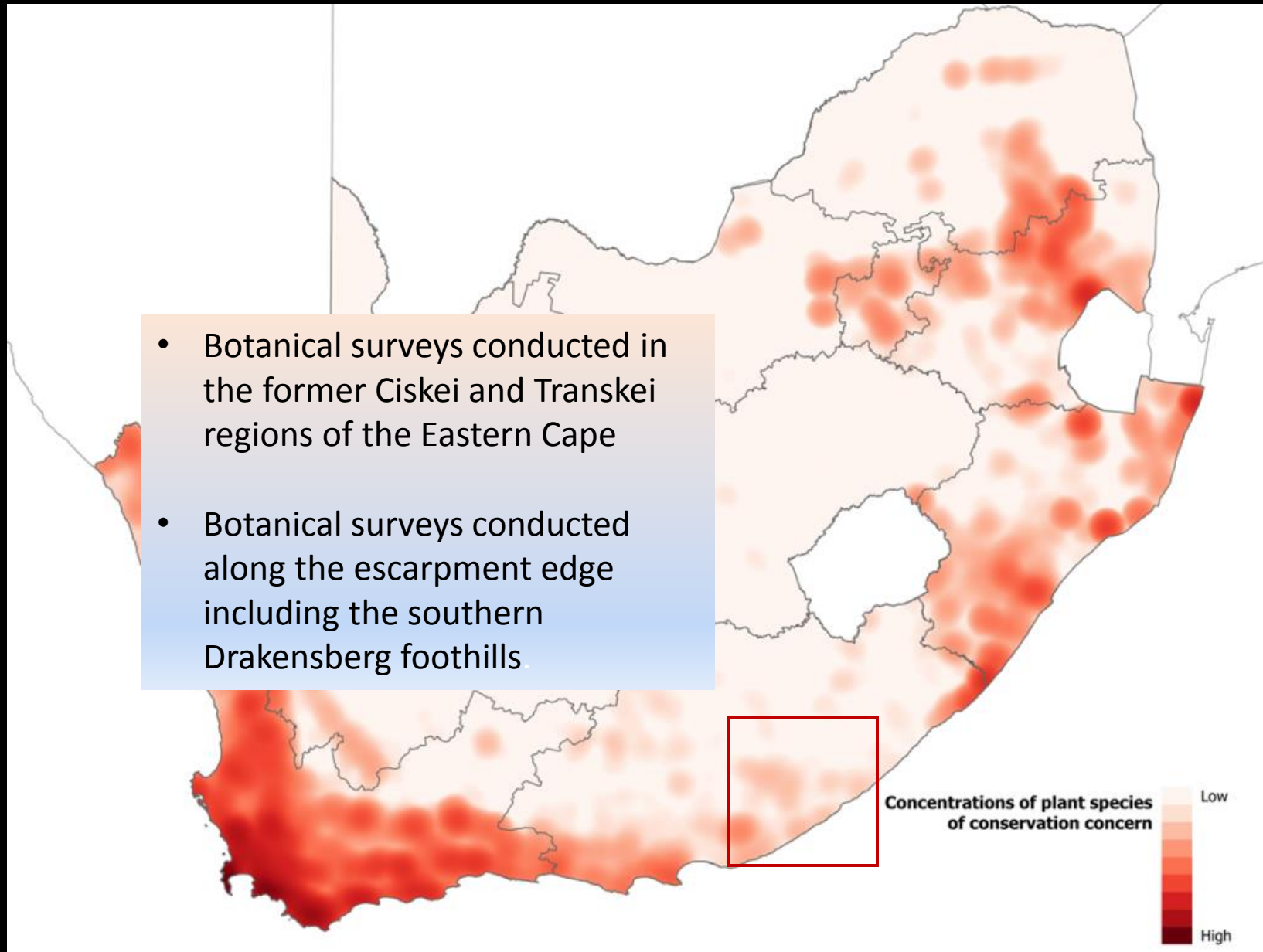
- 11.1. Non-Detriment Findings for all cycad species conducted.
- 11.2. Biodiversity Management Plan for Critically Endangered and Endangered cycads implemented.
- 11.3. Listing proposals for species threatened by international trade but not yet included on one of the CITES appendices completed.

Target 11: No species of wild flora endangered by international trade

Outcomes	Activities	Responsible Stakeholders	Timeframe
11.1. Non-Detriment Findings for all cycad species conducted.	11.1.1. NDFs for all cycads listed as Critically Endangered, conducted.	11.1.1. Scientific Authority.	11.1.1. 2015
	11.1.2. NDFs for all cycads listed as Endangered, Vulnerable, Near Threatened and Least Concern conducted.	11.1.2. Scientific Authority.	11.1.2. 2016
11.2. Biodiversity Management Plan for Critically Endangered and Endangered Cycads implemented.	11.2.1. Biodiversity Management Plan for the Critically Endangered and Endangered cycads published.	11.2.1. SANBI's Scientific Authority coordinating body and the Department of Environmental Affairs.	11.2.1. 2015
	11.2.2. Biodiversity Management Plans for the Critically Endangered and Endangered cycads implemented.	11.2.2. Provincial Conservation Authorities and the Department of Environmental Affairs.	11.2.2. Ongoing from 2015
11.3. Listing proposals for species threatened by international trade but not yet included on one of the CITES appendices,	11.3.1. Species listed as Threatened or Protected in terms of NEMBA and traded internationally, identified.	11.3.1. SANBI's Scientific Authority coordinating body.	11.3.1. 2015



Target 3: Under-sampled areas the focus for plant collecting



Target 5: Important plant areas

- Drakensberg Mountain Centre: Southern Africa's high-elevation centre of plant endemism (Clinton Carbutt, 2019)
- Study recognises 227 angiosperm species, 90 Genera as endemic to the DMC
- Important areas for plant diversity incorporated into biodiversity planning processes and protected area expansion strategies



ASTERACEAE (19/77)

Afroaster ananthocladus (Hilliard & B.L.Burt) J.C.Manning & Goldblatt

Afroaster confertifolius (Hilliard & B.L.Burt) J.C.Manning & Goldblatt

Afroaster erucifolius (Thell.) J.C.Manning & Goldblatt

Arrowsmithia corymbosa (M.D.Hend.) N.G.Bergh

Arrowsmithia deflexa (Hilliard & B.L.Burt) N.G.Bergh

Arrowsmithia hamata (Hilliard & B.L.Burt) N.G.Bergh

Athanasia grandiceps Hilliard & B.L.Burt

Berkheya draco Roessler

Berkheya leucaugeta Hilliard

Berkheya rosulata Roessler

Comborhiza virgata (N.E.Br.) Anderb. & K.Bremer

Cotula lineariloba (DC.) Hilliard

Cotula paludosa Hilliard

Cotula radicalis (Killick & C.Claassen) Hilliard & B.L.Burt

Cotula socialis Hilliard

Eumorphia prostrata Bolus

Aster ananthocladus Hilliard & B.L.Burt

Aster confertifolius Hilliard & B.L.Burt

Aster erucifolius (Thell.) Lippert

Macowania corymbosa M.D.Hend.

Macowania deflexa Hilliard & B.L.Burt

Macowania hamata Hilliard & B.L.Burt

1800–2500

×

×

2100–2300

×

2375–3050

×

×

1525–2590

×

×

2100–2200

×

1800–2200

×

×

1800–2100

×

×

1900–2200

×

1800–2400

×

×

2225–2650

×

1400–2200

×

×

2300–3200

×

×

2600–3230

×

×

2400–3100

×

×

2300–3050

×

×

1900–2730

×

UMZIMVUBU CREW GROUP HIGHLIGHTS





Eucomis schijffii: Endemic to Maloti
Alpine sub-centre

A highly sought-after in traditional medicine, and has been over-exploited over much of its EC and KZN range, especially the lower altitudes



Alepidea amatymbica EN



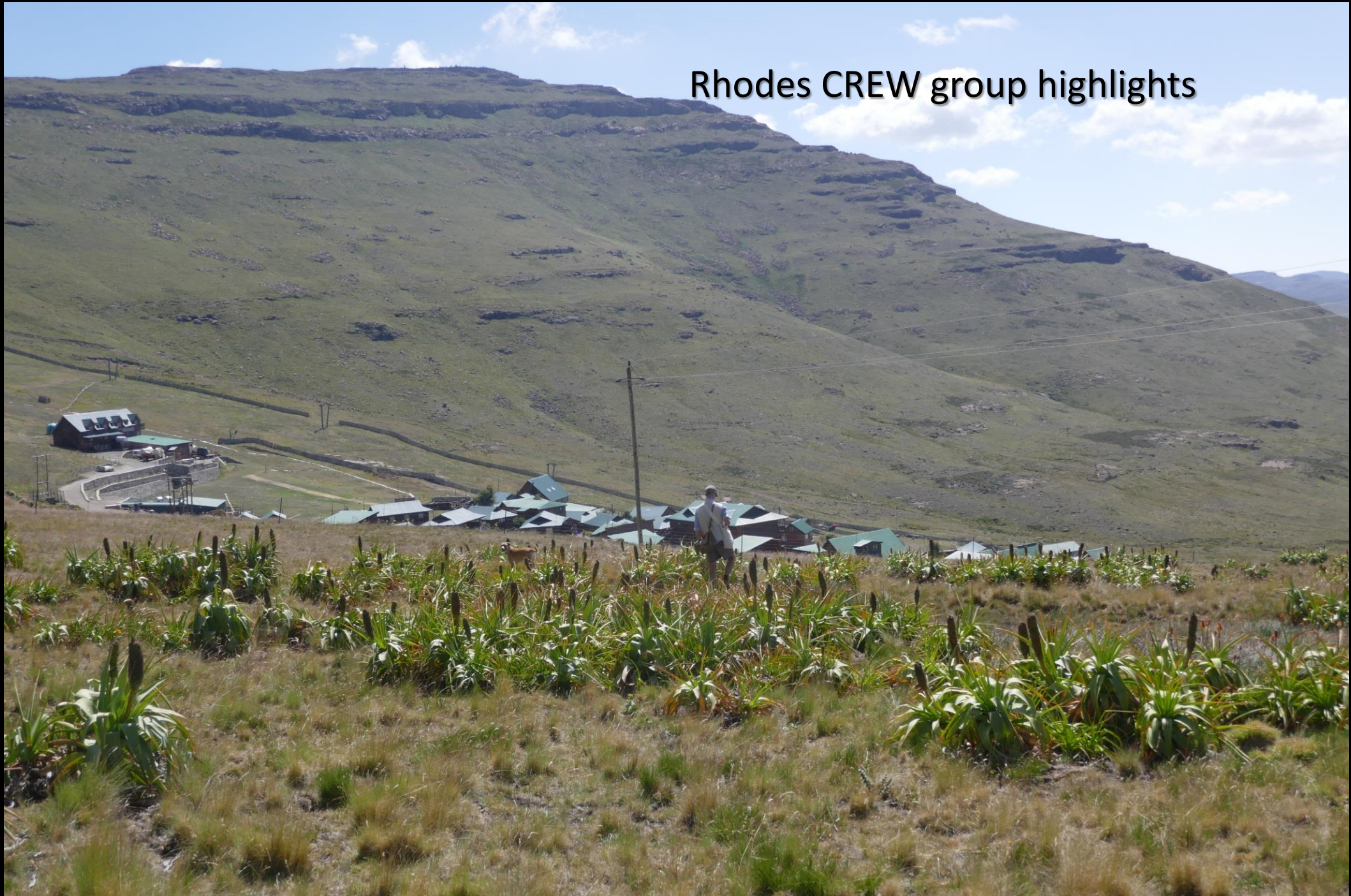


Griqualand East and southern
Drakensberg Mountains including
Lesotho.

Montane and alpine grassland, on
shallow soil over rock, 1500-2500 m.

Schizochilus bulbinella: Rare

Rhodes CREW group highlights





Eucomis grimshawii

A rare, range-restricted and habitat specialist



Trachyandra smalliana EN

Some reflection.....

- We have established a CREW Node in our gap areas
 - We know to some extent what makes these areas unique
 - Protected area expansion strategy is being implemented
 - We do work with local communities to apply holistic approach to conservation
-
- But our data is not good enough to make significant changes;
 - Our data collection efforts needs to be strengthened





Looking forward to botanising with you....