

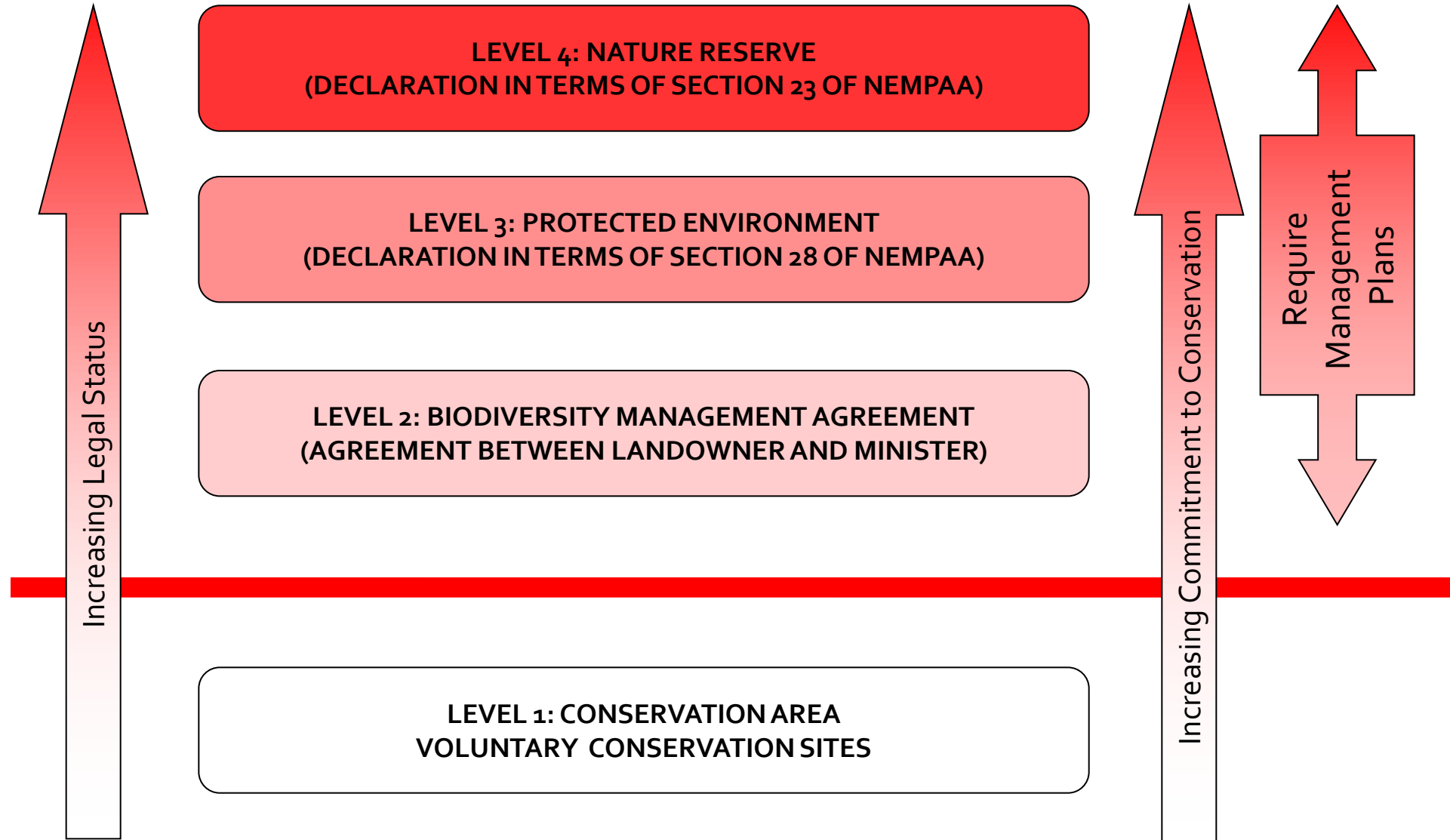
# UMZIMVUBU CATCHMENT PARTNERSHIP PROGRAMME 25<sup>TH</sup> QUARTERLY MEETING WATERSHED PROPOSED STEWARDSHIP Progress Update



# Purpose of the Project

- Expand on Protected Areas (PAs) under National Environmental Management: Protected Areas Act (Act 57 of 2003), NEMPAA.
- PAs are managed mainly for biodiversity conservation, and contribute to the protected area estate.
- **Biodiversity stewardship** is an approach to entering into agreements with private and communal landowners to protect and manage land in biodiversity priority areas, led by conservation authorities in South Africa.
- **Biodiversity stewardship** is based on **voluntary commitments** from landowners, with a range of different types of biodiversity stewardship agreements available to support conservation and sustainable resource use.

# BIODIVERSITY STEWARDSHIP CATAGORIES



# NATIONAL PROTECTED AREAS EXPANSION STRATEGY LEGAL CONTEXT

THE CONSTITUTION OF SOUTH AFRICA  
SECTION 24

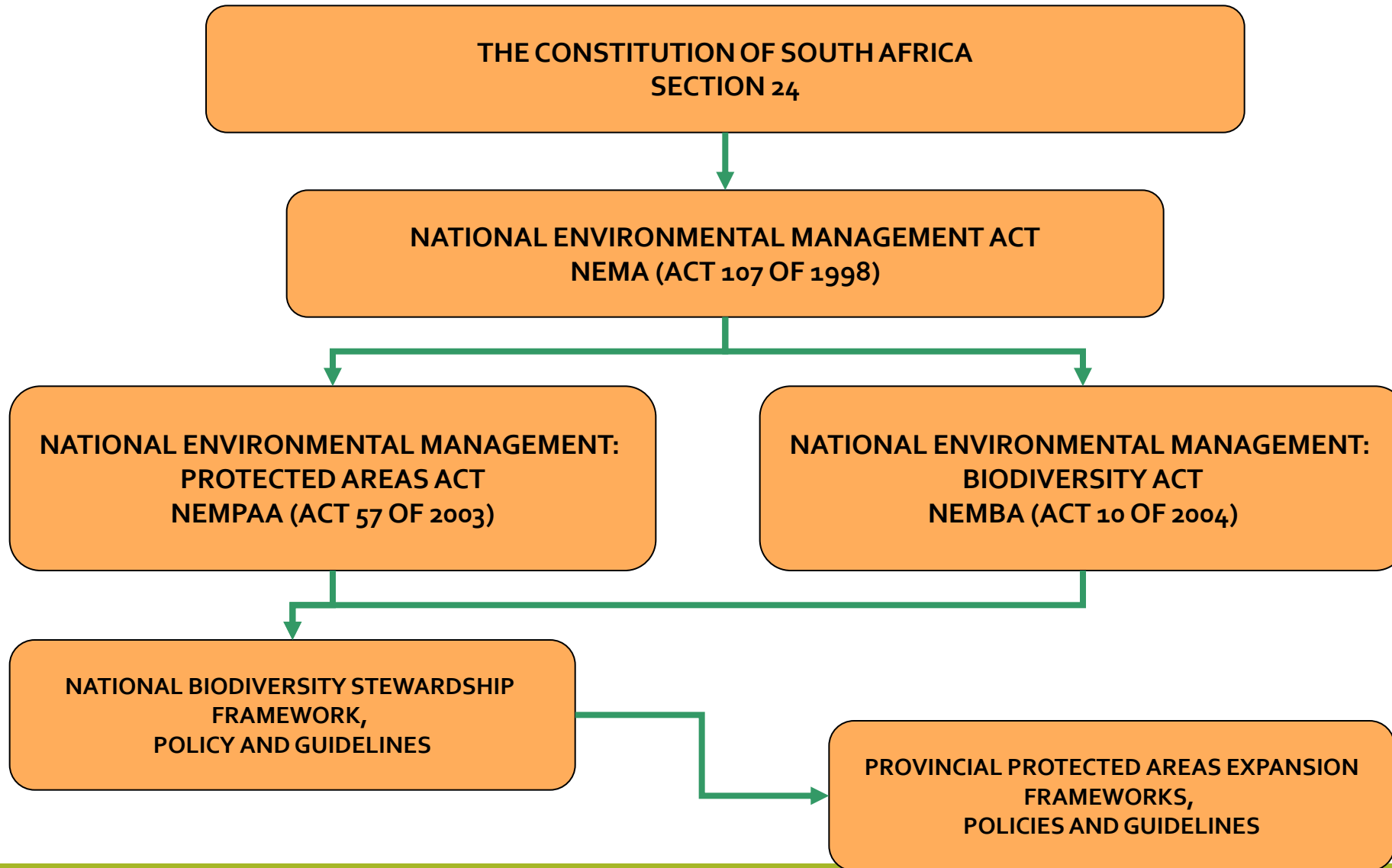
NATIONAL ENVIRONMENTAL MANAGEMENT ACT  
NEMA (ACT 107 OF 1998)

NATIONAL ENVIRONMENTAL MANAGEMENT:  
PROTECTED AREAS ACT  
NEMPAA (ACT 57 OF 2003)

NATIONAL ENVIRONMENTAL MANAGEMENT:  
BIODIVERSITY ACT  
NEMBA (ACT 10 OF 2004)

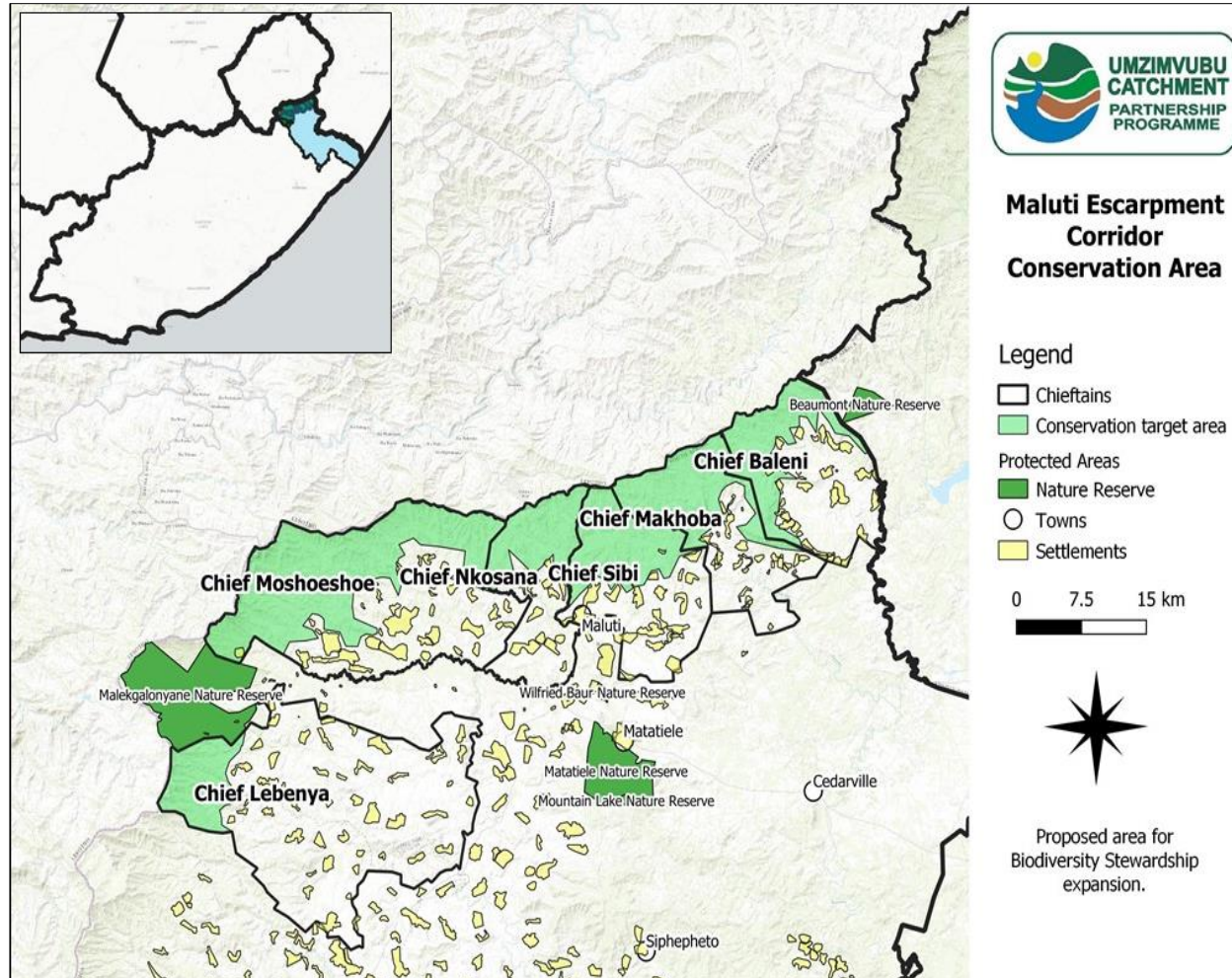
NATIONAL BIODIVERSITY STEWARDSHIP  
FRAMEWORK,  
POLICY AND GUIDELINES

PROVINCIAL PROTECTED AREAS EXPANSION  
FRAMEWORKS,  
POLICIES AND GUIDELINES





# The Area Proposed as Stewardship



- ✓ 6 Chiefs involved.
- ✓ Land tenure – State/Communal Land.
- ✓ Network of Protected Areas.
- ✓ Buffer to the uKhahlamba Drakensberg Park World Heritage Site.
- ✓ An important Biodiversity & Eco-cultural Tourism linkage/corridor with Lesotho and KwaZulu Natal

# Institutional Arrangements

- Facilitated by ECPTA.
- Support function from GEF.
- Funded by GEF 5 .
- Driven through a Watershed Technical Team constituted of various organisations including DRDLR and DWS.
- Broader Stakeholder meeting represented by the 6 Chiefs and other stakeholders.

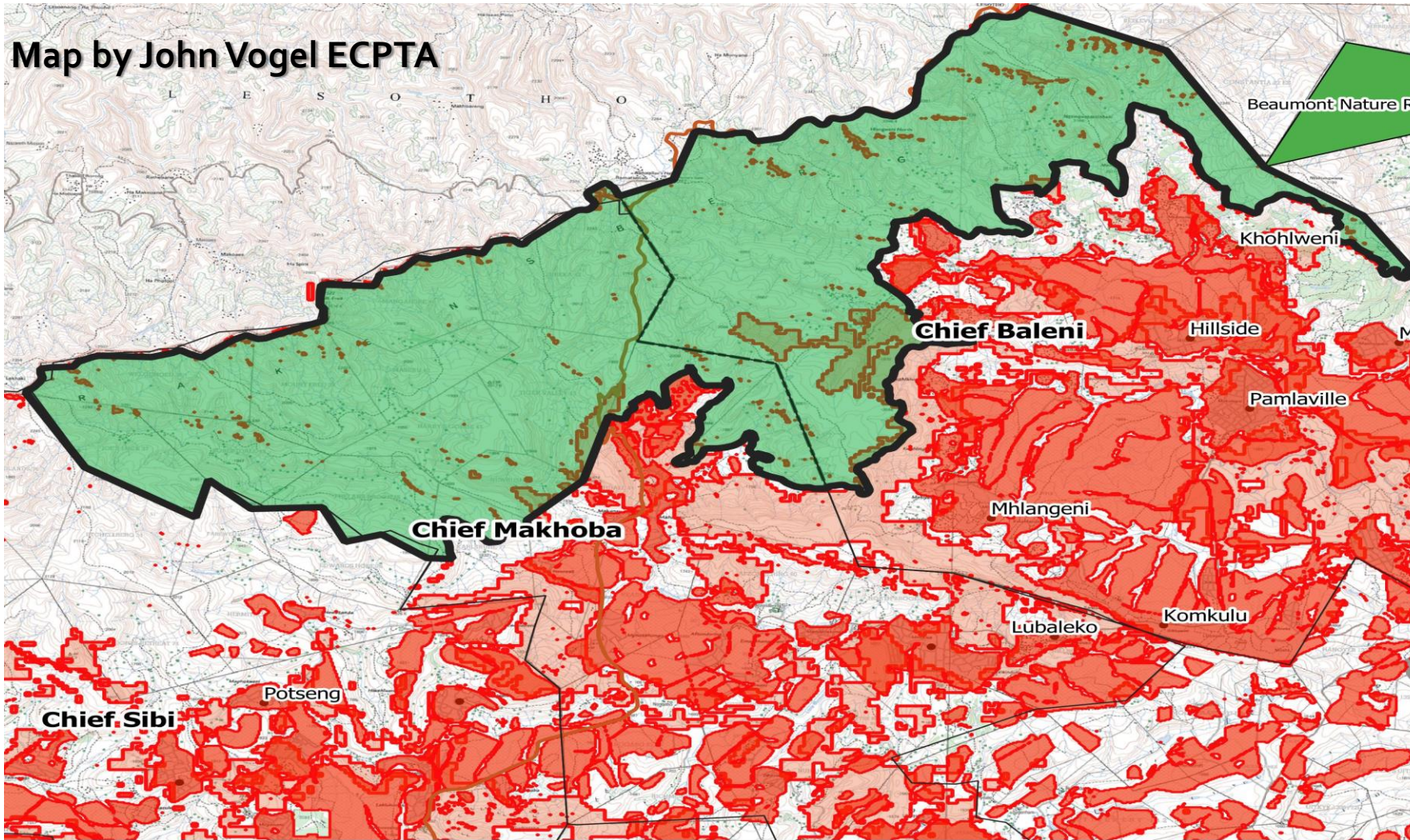


## So far (1)

- All 6 Chiefs consulted and are participating in the project.
- Needs assessment conducted to address immediate issues.
- Biodiversity Assessments for all 6 areas done.
- Eastern Cape Stewardship Site Panel review done for the Chief Makhoba and Baleni (Mzongwana) on 30<sup>th</sup> April 2019.
- 2 areas mentioned above qualified for a Nature Reserve Status.
- 4 remaining areas will be assessed on 13<sup>th</sup> August 2019.



Map by John Vogel ECPTA



## Maluti Escarpment Corridor Conservation Area

### Legend

- Chieftains
- Northern Sector
- Protected Areas
- Nature Reserve
- Roads
- Arterial route
- Main road
- Secondary road



Proposed area for  
Biodiversity Stewardship  
expansion.

Northern Section: 16467.181 Ha  
16 Land Parcels



## So far (2)

- Feedback with regards to the outcome of the EC BS Panel review of the Makhoba and Baleni chieftancy areas given to 5 Chiefs that attended on the 24<sup>th</sup> July 2019.
- Capacity built on the difference between a Nature Reserve and a Protected Environment.
- Capacity built on the permissible and the non-permissible uses in both instances.
- Human-Wildlife Co-existence and management.



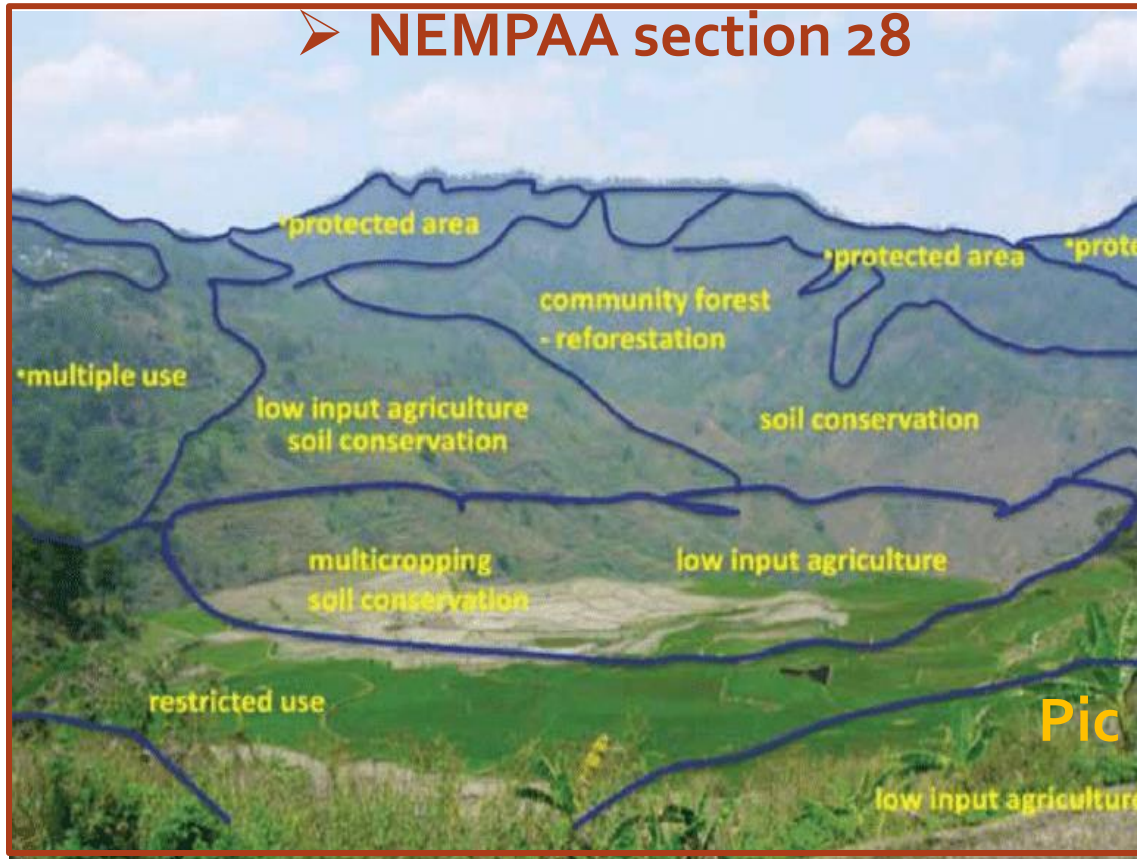
Categories of Stewardships				
Type of agreement	Legal mechanism	Typical contract length	Binding on the property	Binding on the landowner
Nature Reserve	Protected Areas Act 57 of 2003	50-99 years or in perpetuity	Protected area declaration and title deed restriction	Contract agreement
Protected Environment	Protected Areas Act 57 of 2003	Minimum of 30 years	Protected area declaration and title deed note	Contract agreement
Biodiversity Management Agreement	Biodiversity Act 10 of 2004	5-10 years	Not binding	Agreement governed by the Biodiversity Act



# What is the difference between NR & PE?

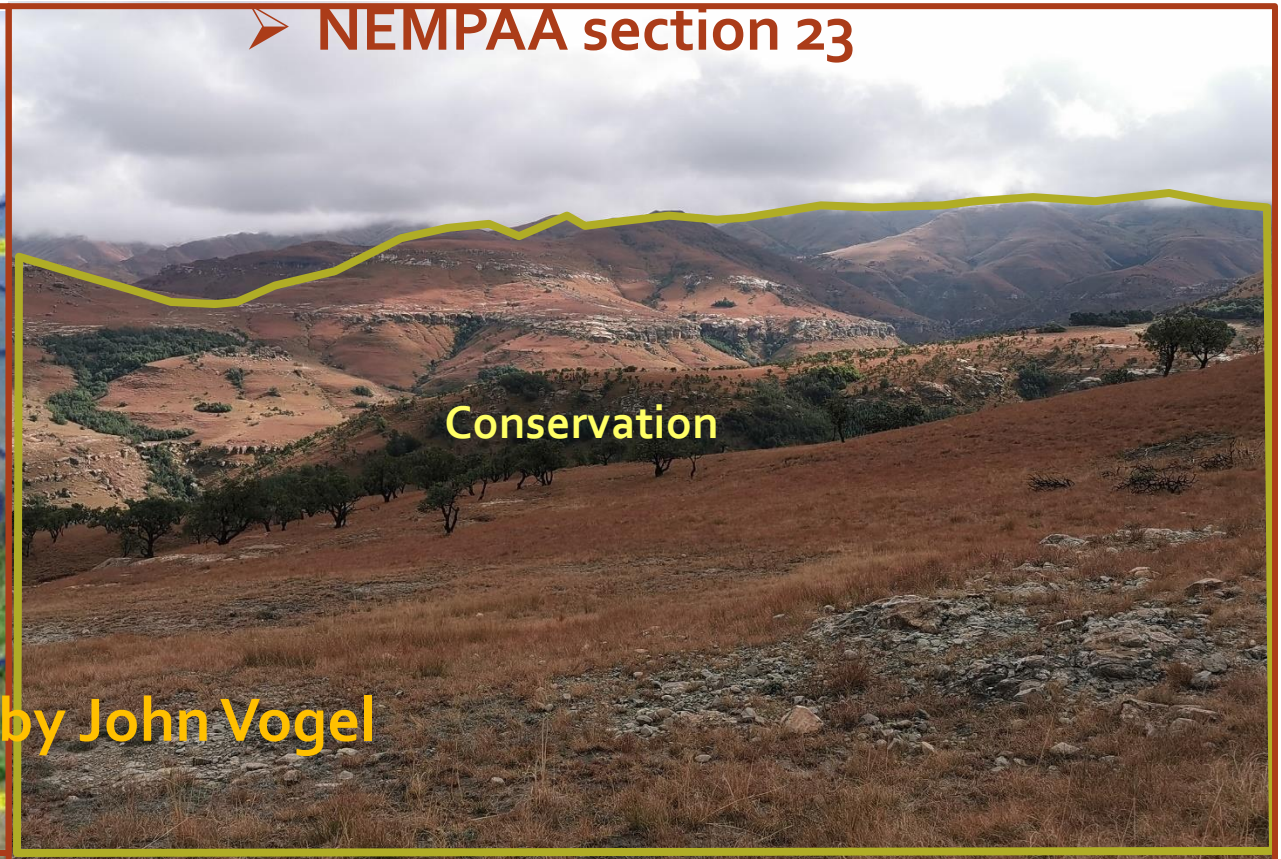
## Protected Environment

- 30 years
- NEMPAA section 28



## Nature Reserve

- 99 years
- NEMPAA section 23



Pic by John Vogel

Activity Guidelines	Nature Reserve	Protected Environment
Sensitive Ecotourism	✓	✓
Environmental Education	✓	✓
Hiking	✓	✓
Mountain biking	✓	✓
Horse riding	✓	✓
Hunting	○	○
Capture and sale of surplus game	✓	✓
Introduction of non-indigenous fauna	✗	○
Fishing	✓	✓
Plant harvesting	○	○
Destruction of indigenous flora	✗	○
Removal of wood products (except from alien plants)	○	○
New transformation of natural vegetation	✗	✗
Mowing	○	○
Commercial/Subsistence Livestock grazing	○	✓
Introduction of invasive alien plants	✗	✗
Introduction of ornamental exotic plants	✗	✗
Off-road vehicles (management purposes)	✓	✓
Off-road vehicles (recreational use - e.g. 4x4's, quad bikes, motorcycles)	✗	○
Development of new roads	○	○
Mining (Large scale commercial)	✗	✗
Mining (small scale for local use)	✗	○
New infrastructure	○	○
Dumping of waste outside of appropriately zoned areas	✗	✗
Activities adversely affecting natural state of water resource	✗	✗
Public access (with landowner's consent)	✓	✓
New transmission, telecommunication lines and cellular, radio towers	○	○
Property consolidation	✓	✓
Subdivision	✗	✗



## So far (3)

- Tourism task team formed to address tourism issues, development of a tourism concept.
- Letter requesting support from EC DRDLR Mr Gcasamba – Acting Chief director submitted.
- Swift response received on 18/07/2019. DRDLR is on board.
- Community GIS mapping by communities with support from the Watershed Technical Team locals over 3 weeks, up to 3<sup>rd</sup> week August 2019.
- Community Resolution planned for September 2019.

## So far (4)

- Naming of the property
- Designating a management authority.
- Community representation will be attending the SANBI Biodiversity Stewardship workshop on 21<sup>st</sup> – 22<sup>nd</sup> Aug in Pietermaritzburg.
- Meeting with JPTT on the 23<sup>rd</sup> August 2019.
- Site visit by the JPTT.

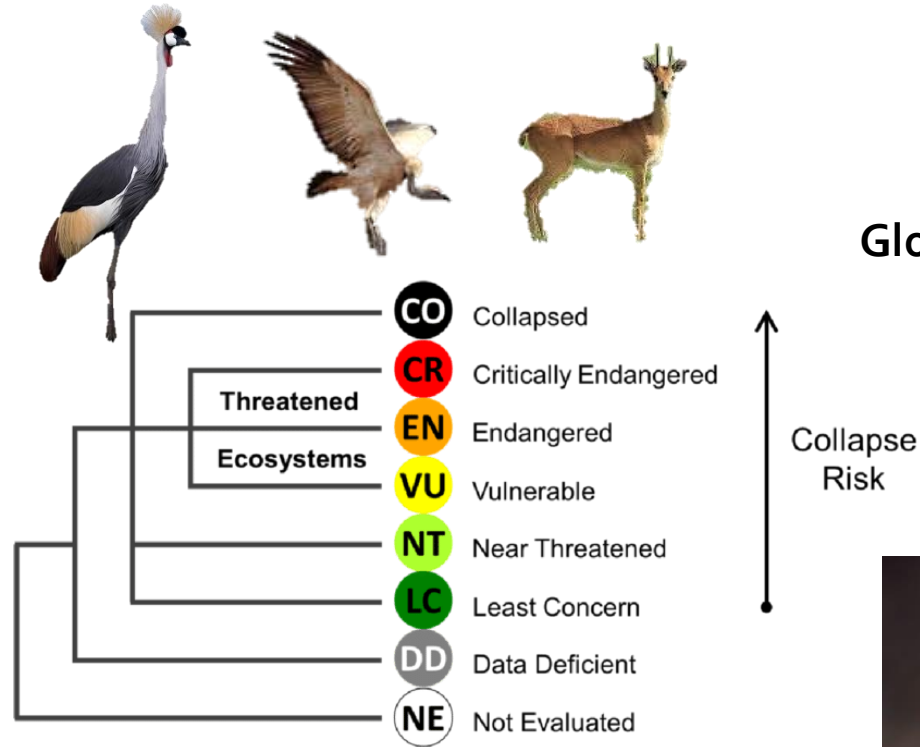
## 4) Stewardship implementation procedure

No	STEP	DESCRIPTION OF ACTION	OUTCOME
1.	Initiation of declaration	Landowner applies to Eastern Cape Parks & Tourism Agency, alternatively land is nominated by NGO or ECPTA staff	Approval by ECPTA Stewardship Working Group to proceed with the process
2.	Biodiversity Assessment	Perform a biodiversity assessment, together with ECPTA, in order to ensure the property has the biodiversity value appropriate for a protected area	Biodiversity assessment information
3.	Declaration Agreement	Negotiate contents of legal consent agreement, landowner consents to the declaration by signing the agreement (with MEC)  Attach original SG diagram (with proposed NR boundary sketched on SG diagram, if a portion)	Declaration Agreement signed by landowner
4.	Management Plan	Together with ECPTA, produce a management plan for the protected area (according to the NEM: Protected Areas Act)	Completed Management Plan
5.	ECPTA approval	Submit documentation (legal agreements and Management Plan) for approval at relevant ECPTA committees	ECPTA Board approval
6.	Memo to MEC	Draft Proclamation Proposal to MEC  Memo accompanying Proposal, requesting permission to proceed with PPP and consultation	MEC signs Memo (giving approval to proceed on behalf of MEC)



7.	Public participation	Publish “Intention to Declare” notice in the Provincial Government Gazette  Publish advert in 2 national newspapers	Published notices (60 day comment period) – PA details and management authority
8.	Consultation	Draft letters to a standard list of stakeholders – national government Depts, provincial government Depts (including DEDEA), local municipality, neighbours, and any lawful occupiers	Registered letters sent to stakeholders – 60 day comment period (referring to provincial government gazette notice)
9.	Comments / objections	Deal with any comments received	Provide written responses on comments (copy to MEC)
10.	Declaration	Declaration Agreement (in the form of a notarial deed) is submitted to the MEC’s office, together with “no objections” or objection response, and management plan  Approved SG diagram	Signed Declaration Agreement by MEC, sent to Attorney to present to Notary  Management Plan signed by MEC
11.	Gazette notice	Publish the “Declaration Notice” in the Provincial Government Gazette (on behalf of MEC)	Published notice in provincial Government Gazette - Proof of declaration
12.	Notarial Deed	DA and PAMA sent to Attorney to present to Notary a) MEC sends notification to Deeds office (letter) b) Notary submits Notarial Deed to Deeds office	Notary signed Notarial Deed  Title deeds endorsed
13.	PA database	Include all relevant information of the protected area in the PA register (via provincial authority)	PA information lodged in PA register with DEA

# Species of Special Concern



## Global Centre of Plant Diversity and Endemism



# Enkosi

**JOYCE LOZA**  
**MALOTI DRAKENSBERG TRANSFRONTIER**  
**PROGRAMME**  
**MIDMAR**  
**SOUTH AFRICA**

**TEL: +27 33 239 1885**

**FAX: +27 33 239 1895**

**CELL: +27 72 016 1196**



