

# MALOTI THABA TSA METSI PA

Proposed Protected Environment of 54 850ha along watershed

**THIS STEWARDSHIP EFFORT TO DECLARE A PROTECTED AREA ALONG THE WATERSHED IS DRIVEN BY RESIDENT COMMUNITIES, WITH A CORE TECHNICAL SUPPORT TEAM FROM UCP (ERS, EWT, CSA, WWF, CONTRALESA, MDTP, ANDM, ECPTA, DEDEAT, DWS, MLM, DRDLR) WORKING WITH LAND USERS. IT IS FUNDED BY WWF AND GEF5, AND THE PASSION OF A COMMITTED UCP CREW**



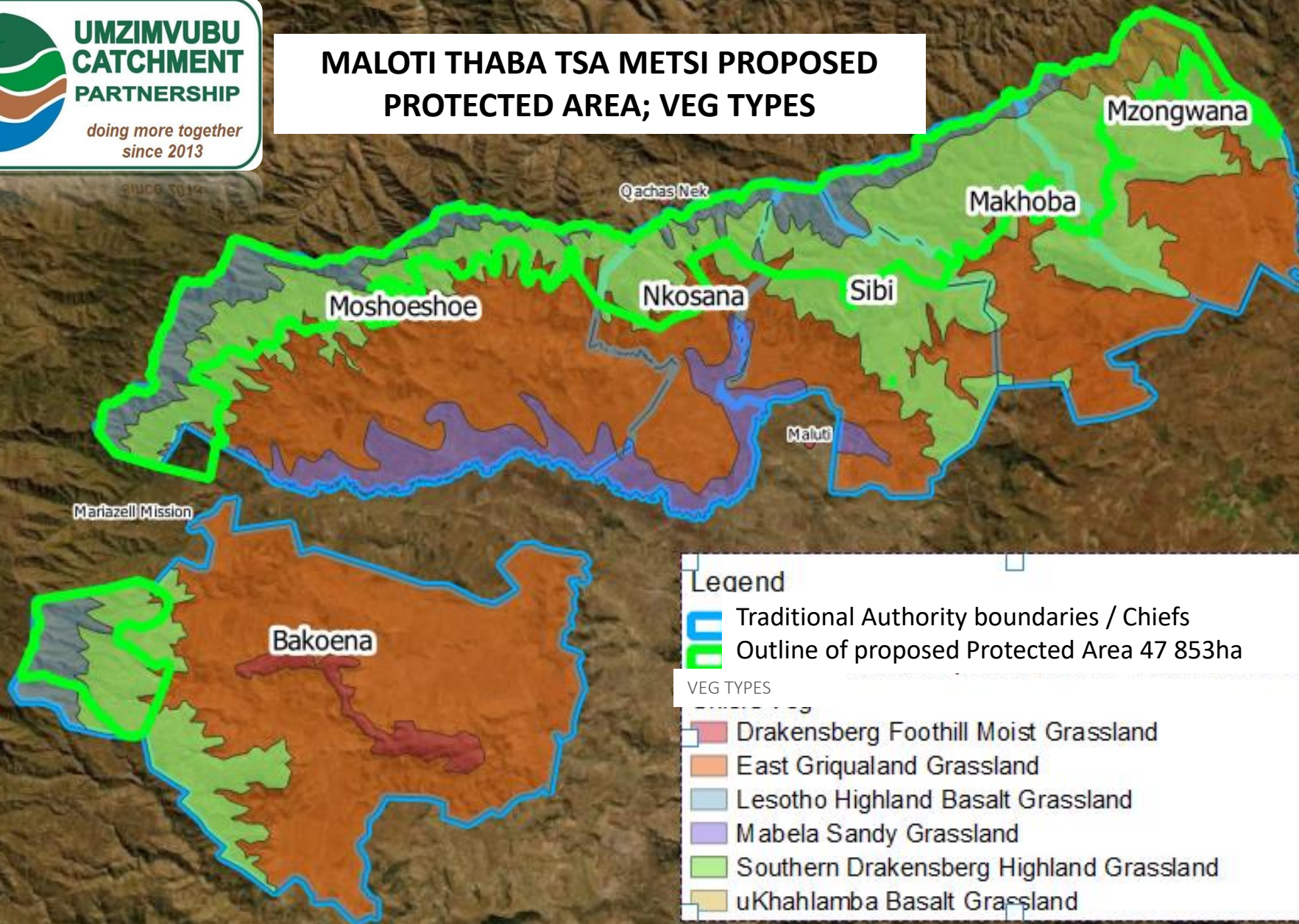




**UMZIMVUBU  
CATCHMENT  
PARTNERSHIP**

*doing more together  
since 2013*

## MALOTI THABA TSA METSI PROPOSED PROTECTED AREA; VEG TYPES



### Legend

- Traditional Authority boundaries / Chiefs
- Outline of proposed Protected Area 47 853ha

### VEG TYPES

- Drakensberg Foothill Moist Grassland
- East Griqualand Grassland
- Lesotho Highland Basalt Grassland
- Mabela Sandy Grassland
- Southern Drakensberg Highland Grassland
- uKhahlamba Basalt Grassland

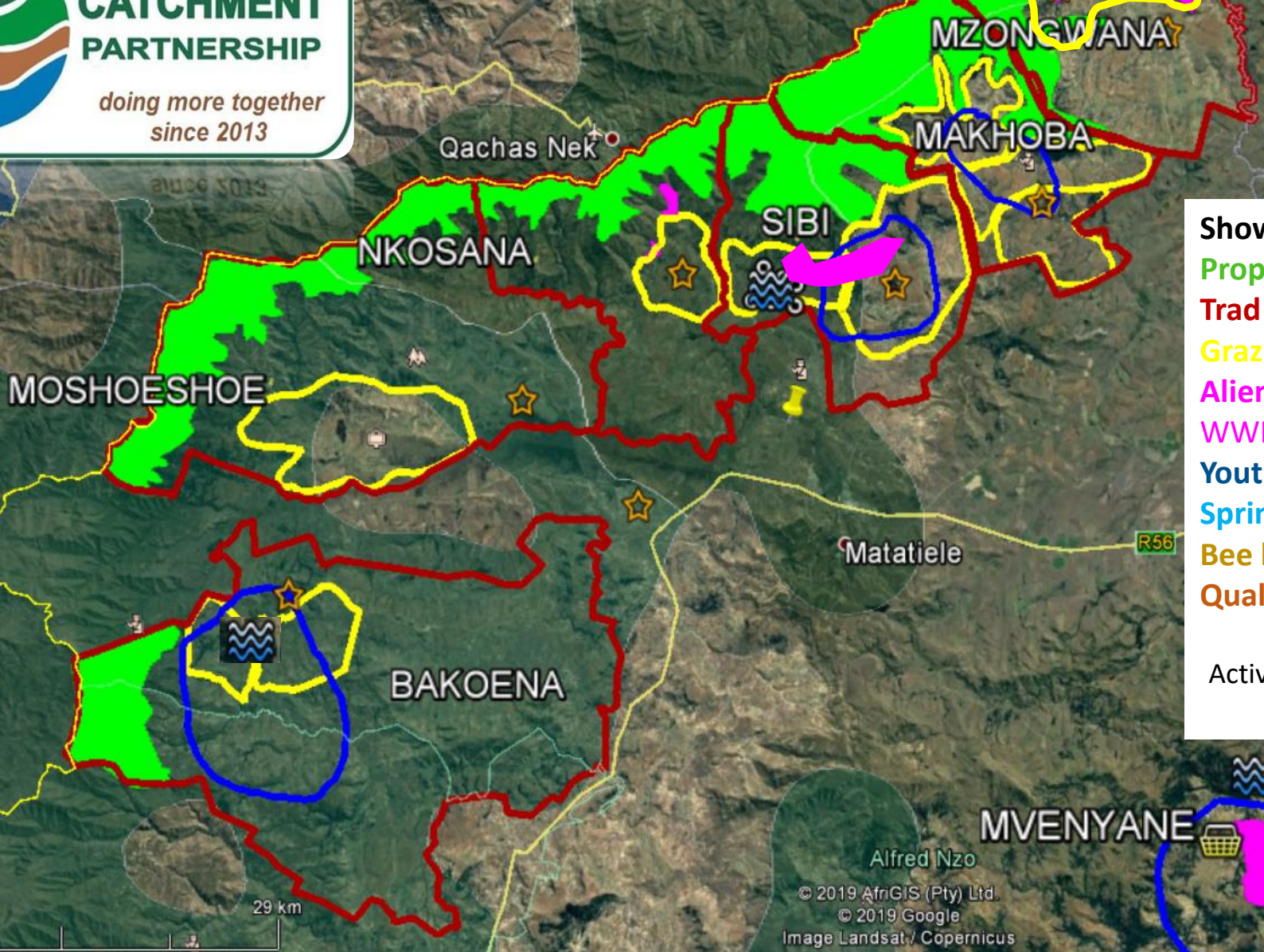
# **UPPER UMZIMVUBU WATERSHED**

**Target stewardship footprint includes six Traditional Areas  
comprised as follows:**

- 1. Core MTTMPA under NEMPAA 54 850ha along watershed**
- 2. Buffer zone of approx. 150 000ha consisting of  
various landcare activities such as voluntary CAs  
(Conservation Agreements) with Grazing Associations,  
with compliance linked to auction commission and other  
incentives including livestock husbandry, alien  
plant management and spring protection.**

The buffer zone and other activities are in response to a  
wish-list of needs compiled during consultation since 2015





**Showing activities in upper watershed:**


**Proposed protected area along border**


**Trad Auth areas in red outline**

**Grazing agreements with auctions,**

**Alien plant clearing (DEA WfW, corporate WWF-supported and FSC certified)**

**Youth entrepreneurship in blue outline**

**Spring protection** 

**Bee keeping** 

**Qualified Herder Ecochamps** ★

Activities co-implemented by ERS - LIMA – CSA,  
under the UCP collective effort





24/04/2018

ERS  
environmental  
and rural  
solutions

Map Created using: QGIS  
Map created by: A. Rainier

Map Created using: QGIS  
Map created by: A. Rainier



**ERS as a member of the UCP stewardship effort, is supporting livelihood needs in the buffer area of the proposed PA, along with partner NGOs LIMA and Conservation SA. These activities include basic water supply, alien plant clearing, livestock husbandry and links to markets for beef and biomass, as well as advocacy for EbA.**







**Widespread alien plant invasion degrading grassland & water replenishment**







**ALIEN PLANT CLEARING IS BEING DONE THROUGH CORPORATE SUPPORT AS WELL AS WORKING FOR WATER, AND A MARKET FOR CHARCOAL IS BEING ESTABLISHED WITH FSC CERTIFICATION**





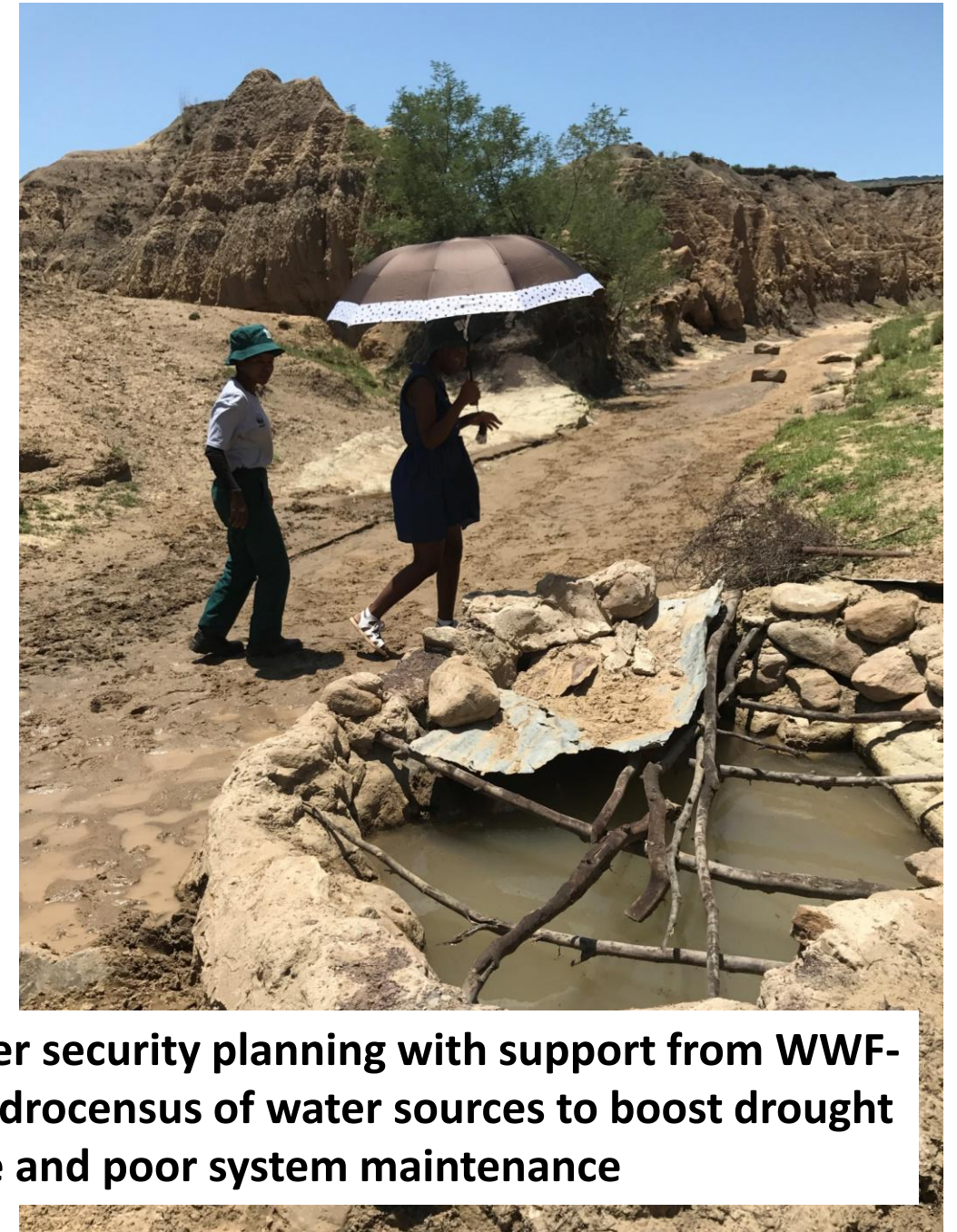
**Youth enterprises can pursue value-add activities from alien plant harvesting as raw material, and sell through an FSC certification scheme being established**





**The area has widespread water supply and erosion challenges**





**Community-based water security planning with support from WWF-SA and corporates – hydrocensus of water sources to boost drought resilience and poor system maintenance**





**Community-driven water security planning with Traditional Authorities,  
linked with Alfred Nzo District Municipality**





**Youth enterprise value-add activities from alien plant control and fresh produce. Youth interns can provide an energetic resource for Traditional Councils to assist with increased awareness of COVID safety, hygiene, ecological and economic opportunities including food and water security.**





**Mobile village auctions as part of rangeland management agreements with grazing associations – auction turnover is in excess of R25 million since 2014. This is based on restoring good governance with land users and traditional leadership.**





**Citizen science-based monitoring with youth interns, including aquatic and veld condition, as part of support for rangeland associations and cleared area restoration**



# MALOTI THABA TSA METSI PROTECTED AREA

## PROPOSED MANAGEMENT AUTHORITY (MA) STRUCTURE:

**Voluntary association ('MTTMMA') with constitution, representing all 6 areas.**

**ERS act as neutral convenor, build internal capacity, secretariat, draft proposals, etc.**

**MTTMMA can enter into co-management agreements with service providers to fulfil PAMP objectives**

