



RANGELAND RESTORATION

STRATEGICALLY USE ECOLOGICAL PRINCIPLES TO PLAN AND APPLY BIOLOGICAL, NATURE-BASED AND PRESCRIBED ENVIRONMENTAL ACTIVITIES SUCH AS CONSERVATION PRACTICES AND ALIEN PLANT REMOVAL. TREATMENTS FOR THE ENRICHMENT OF LAND FOR HABITAT, LIVESTOCK GRAZING, WATERSHED HEALTH, AND OTHER LAND MANAGEMENT GOAL

PROGRAM/MODEL – MARGINALIZED SUBSISTENCE FARMING IN COMMUNITIES

By Ms. Nompumelelo Tenza

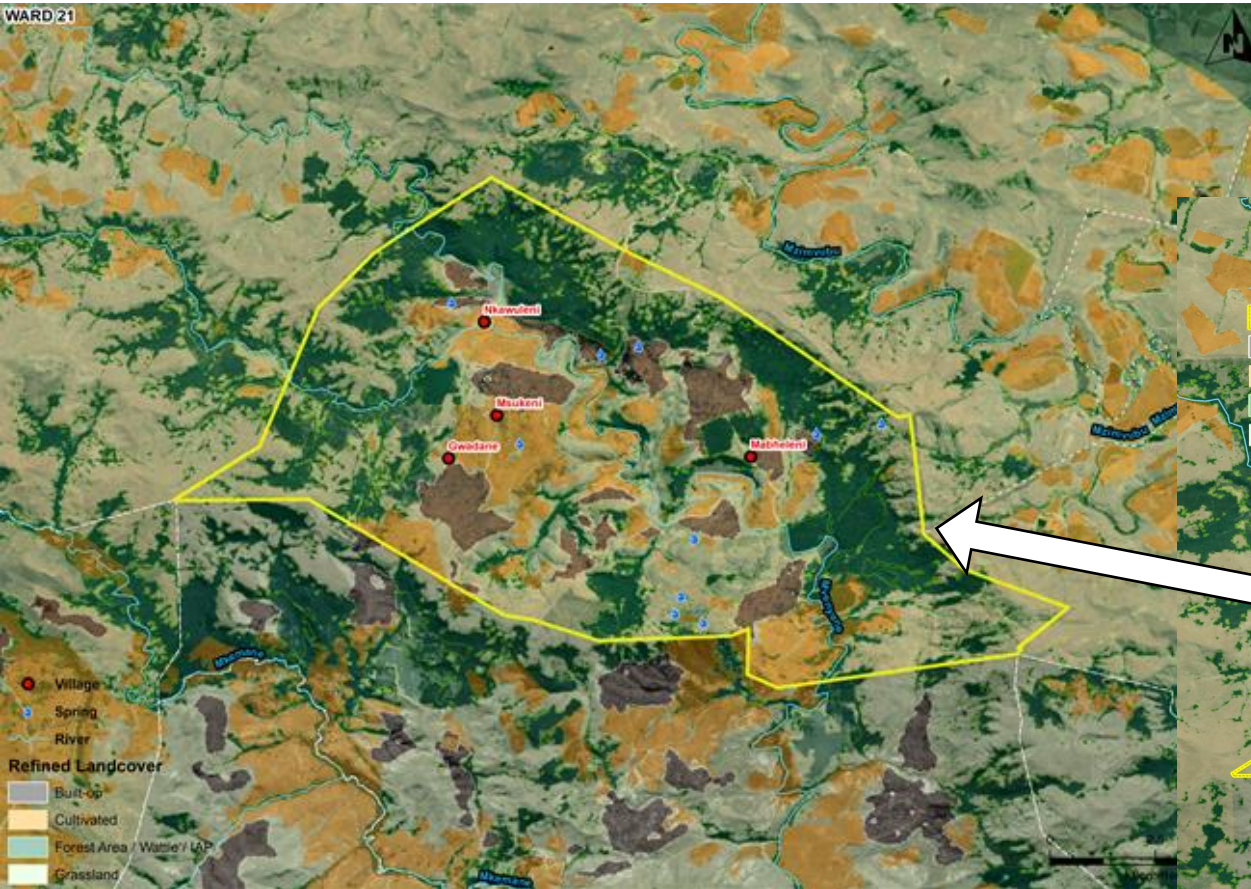


MONITORING & EVALUATION

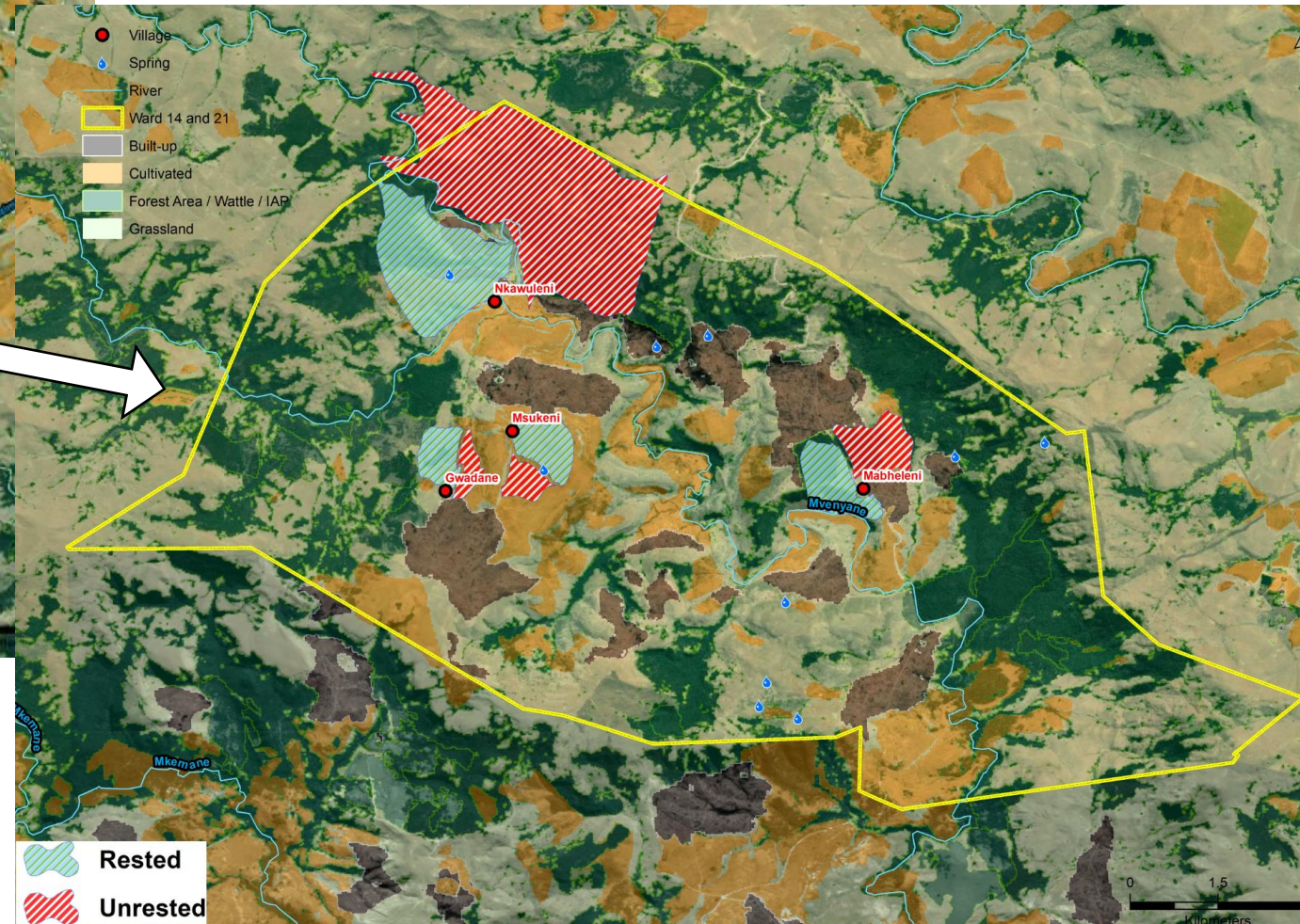
- M&E in Programme Life Cycle
- Umzinvubu Catchment
- Additional resource – Scientific Research, Baseline Monitoring, Indicators and Existing Tools
- Change Detection (Time-series Analysis)

PROGRESS...

SPATIAL DELINEATION OF GRAZING LAND USING NATURAL BOUNDARIES



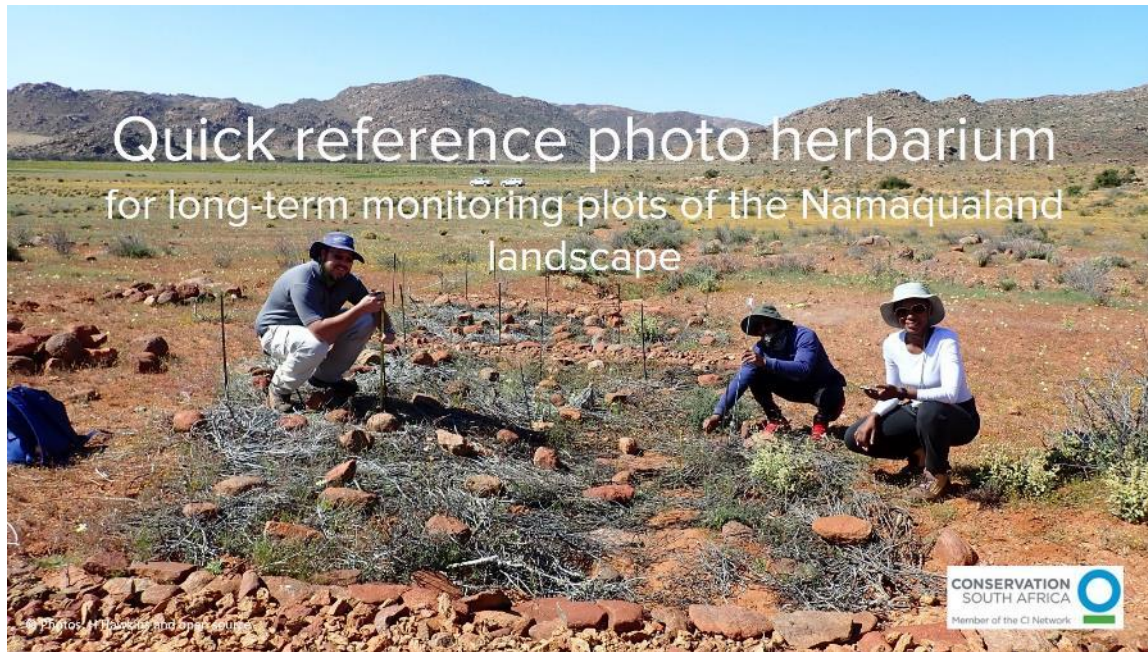
- RESTED vs UNRESTED NEED TO BE SPATIALLY EXPLICIT



- BETTER UNDERSTAND THE MOVEMENT OF LIVESTOCK
- IMPLICATIONS FOR COMPLIANCE AND IMPACT MONITORING
- ENCOURAGE STRUCTURED GRAZING PLAN for CA's

VEGETATION SURVEYS

- Updated protocols, M&E Tools
- Photographic herbarium
- Using ODK for field surveys



Field data form Namaqua UP...

Protocol - 10 key points

Site details
Group

hits
Repeatable Group

* Erosion type and count
Sheet

Erosion count
4

* Grazing count
9

Genus species1

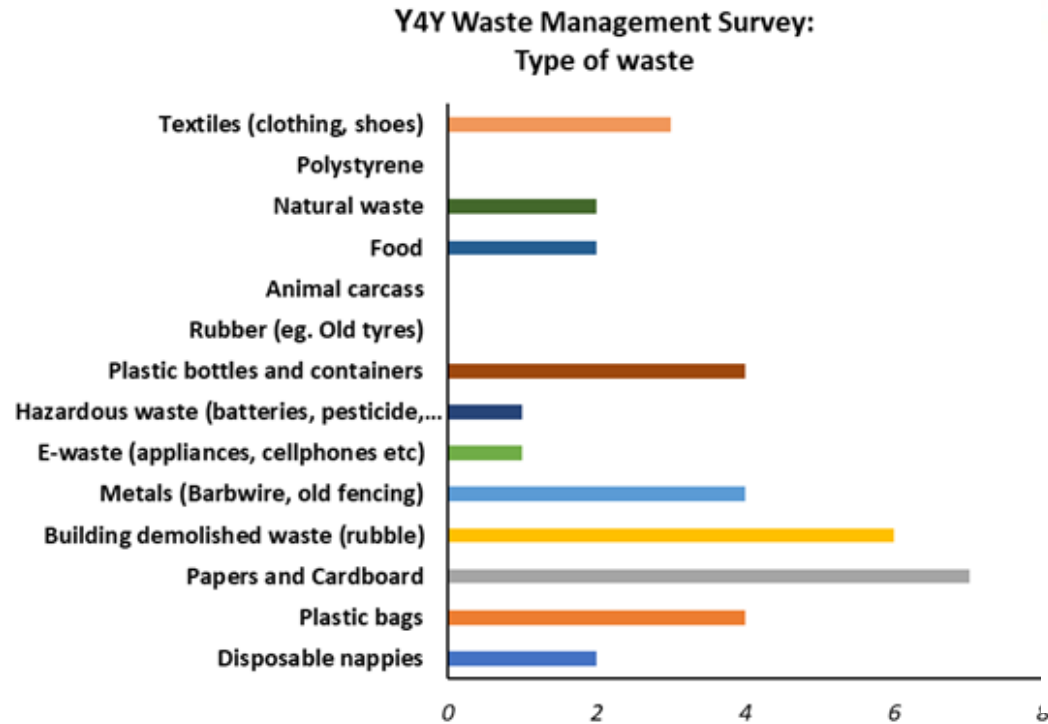
Exit

imgflip.com

ODK UPDATE

WASTE MANAGEMENT SURVEY

Y4Y Waste management survey



Paperless Data Collection ODK – first EC test run was successful
ie. WASH Waste Management – with YES4YOUTH





Cultural Significance + Beliefs of Subsistence Farming

High % of Biodiversity occurs outside of formal protected areas, hence, need to engage communities to enhance their farming production while protecting and restoring natural resources to effectively provide sustainable base for livelihoods.

- Guidelines- Richard Lechmer-Oertel Burning and Grazing for Biodiversity in SA Grasslands “*Managing Grasslands for Biodiversity and Livestock Production*”
- Working with our Partners ERS, LIMA, EKZNW, WWF, EWT, SANBI, Matatiele Municipality, Environmental Affairs
 - - Best Practice
 - (with e.g. Y4Y/Herders/EcoChamps/DEA)

Approach working with Grazing Associations

- Science and Economics of Rangeland Restoration

- Engage, Inspire and empower in sustainable way
 - Sustainability Development Goals
 - Conservation Agreements
- Project Viability in terms of Sustainability, Incentives and Tangible Benefits for the Community
- Need Community Buy-in and Farmers taking ownership of the Program

CONSERVATION AGREEMENTS

SOME INCENTIVES...

- Livestock Vaccinations



- Livestock Auctions
(Access to Market)

MCIMBI ZINGIW	1	Item Stats Roll.rep
MOKEJANE M	1	LsLoadingRoll.rep
MOSHOESHOE W	1	QREP Loading Instructions NoRoll.rep
MAKELANI NS	1	QREP Loading Instructions Roll.rep
SETHATHI MA	1	QREPx Loading Instructions Roll.rep
SETHATHI MA	1	Roll Per Buyer Detailed.rep
QHUSHEKA AM	1	Roll Per Buyer rep
MATLI MM	1	
MATLI MM	1	
MPOTA MF	1	
NKEJANA TE	1	
NKEJANA TE	1	
MATUMANE MA	1	
LETSAKHA GL	1	
LETSAKHA GL	1	
XINGWANE MF	1	
MAKOMFANE ZW	1	
SHEWANE MC	1	

ID	DESCRIPTION	VALUE
1	POTENTIAL TURN	1797500
2	QTY SUPPLIED	305
3	QTY SOLD	246
4	QTY NOT SOLD	59
5	% SOLD	80
6	MAXIMUM PRICE	13200
7	MINIMUM PRICE	2500
8	AVERAGE PRICE	306.91056910569

£1,821,196.91

0 CY RFD INKABI - OS 0.0

Broader Program, Strategic Regional Plans and Recommendations

- Program and amplification model fit into existing Strategic Regional Plans and embedded in existing community programs
 - Soil Carbon
 - Rehabilitation of degraded rangeland

“Taking Care of the Environment today, for a better tomorrow...”

The background is a blue gradient with faint concentric circles. White circuit-like lines with circular nodes are positioned in the corners: top-left, top-right, bottom-left, and bottom-right.

Thank You!