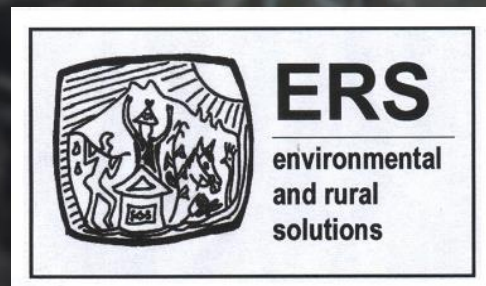




Water is Resilience

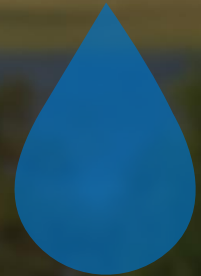
Building resilience and strengthening water
security during a global pandemic



We live in a very
special place...



“Amanzi aphuma apha”



Access to potable water

- 1/4 of households in the Eastern Cape do not have access to piped water

And it continues to erode
steadily...



Water is our weapon for fighting this virus...

Water is the basis for public Health infrastructure.

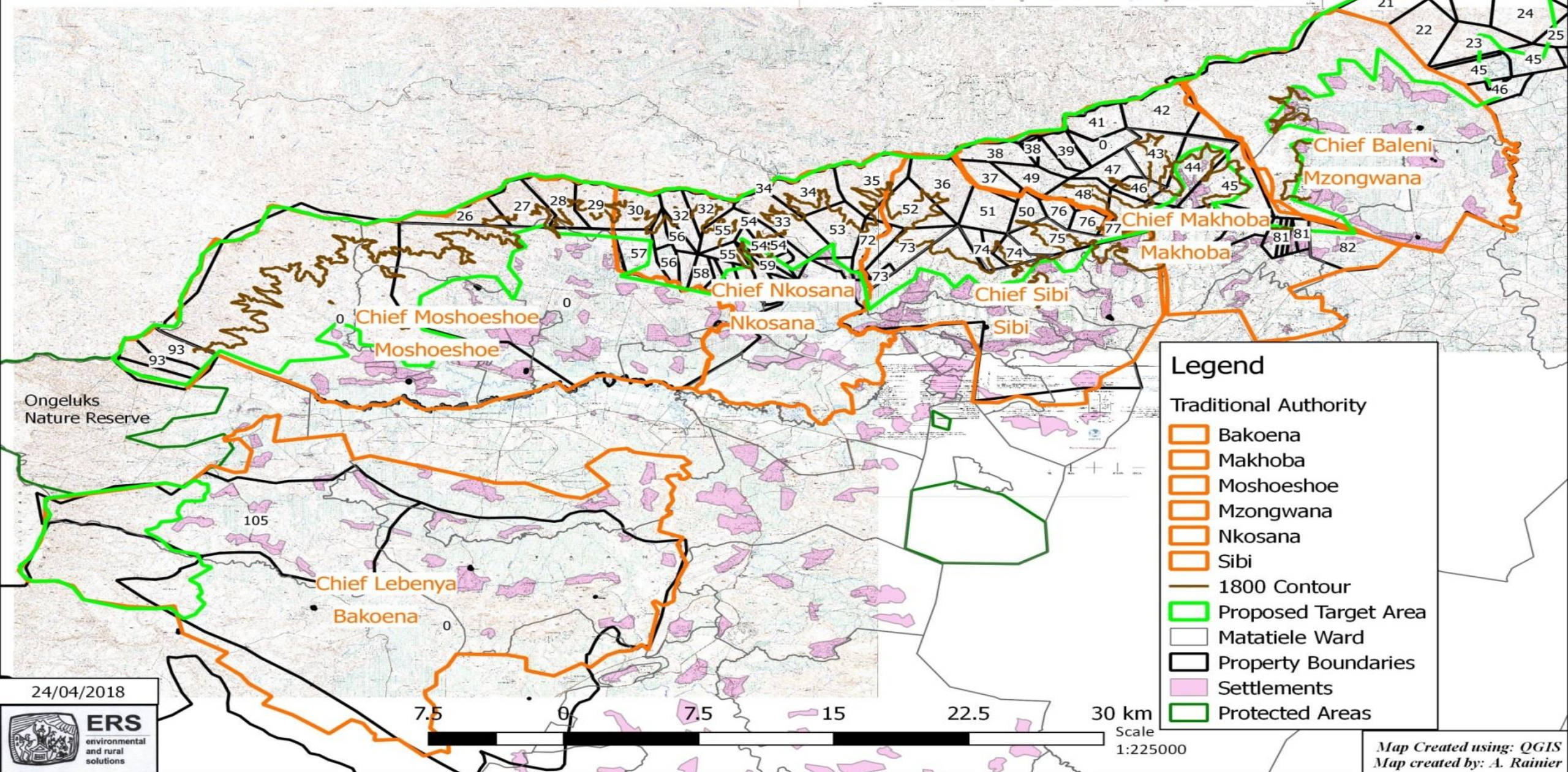
Acts as a barrier

- Personal hygiene
- Healthy living space





Matatiele Watershed Proposed Protected Area Showing Surveyed Properties & Traditional Authorities

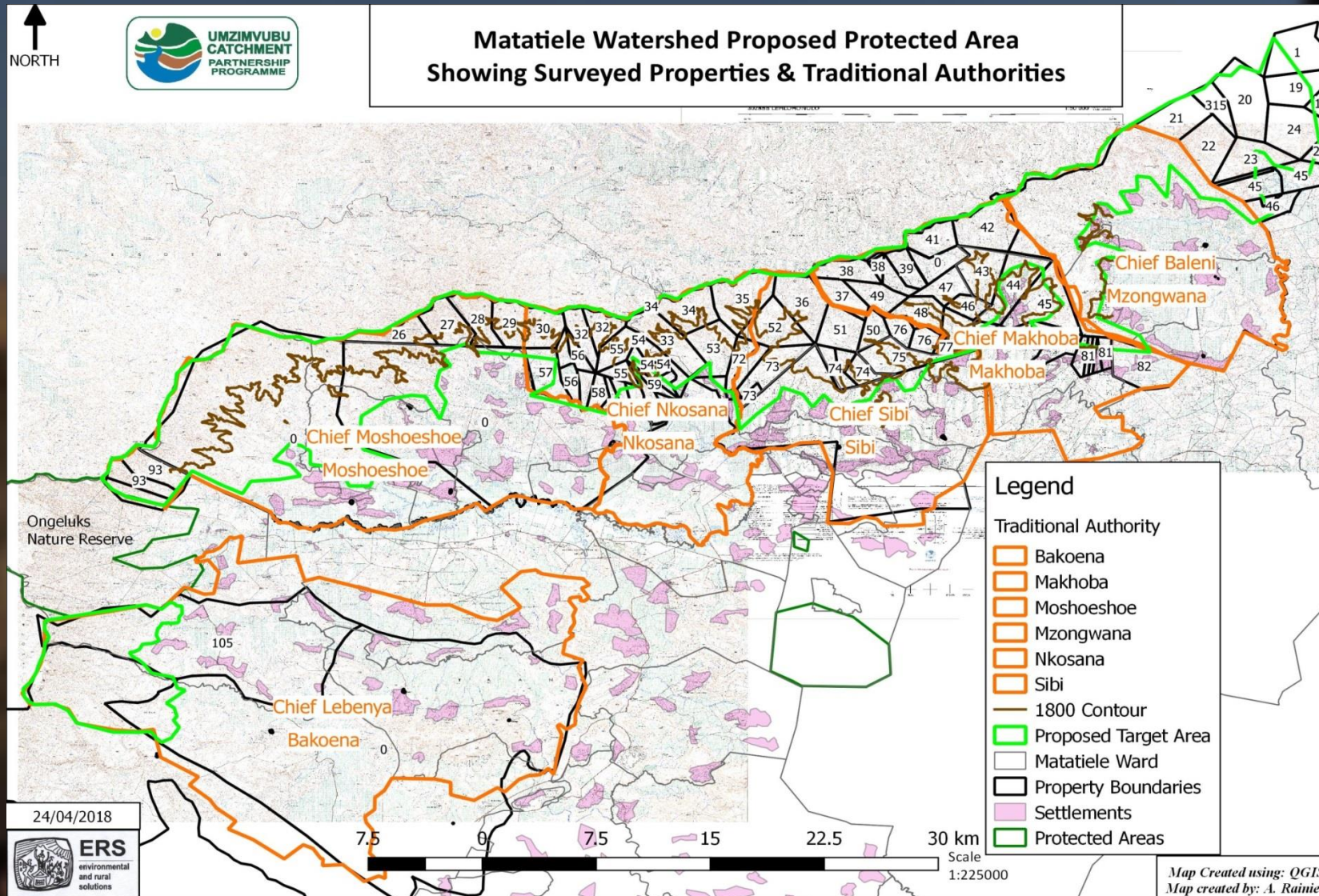


Safeguarding spring sources



**Low-cost local delivery
based on community
consultation**

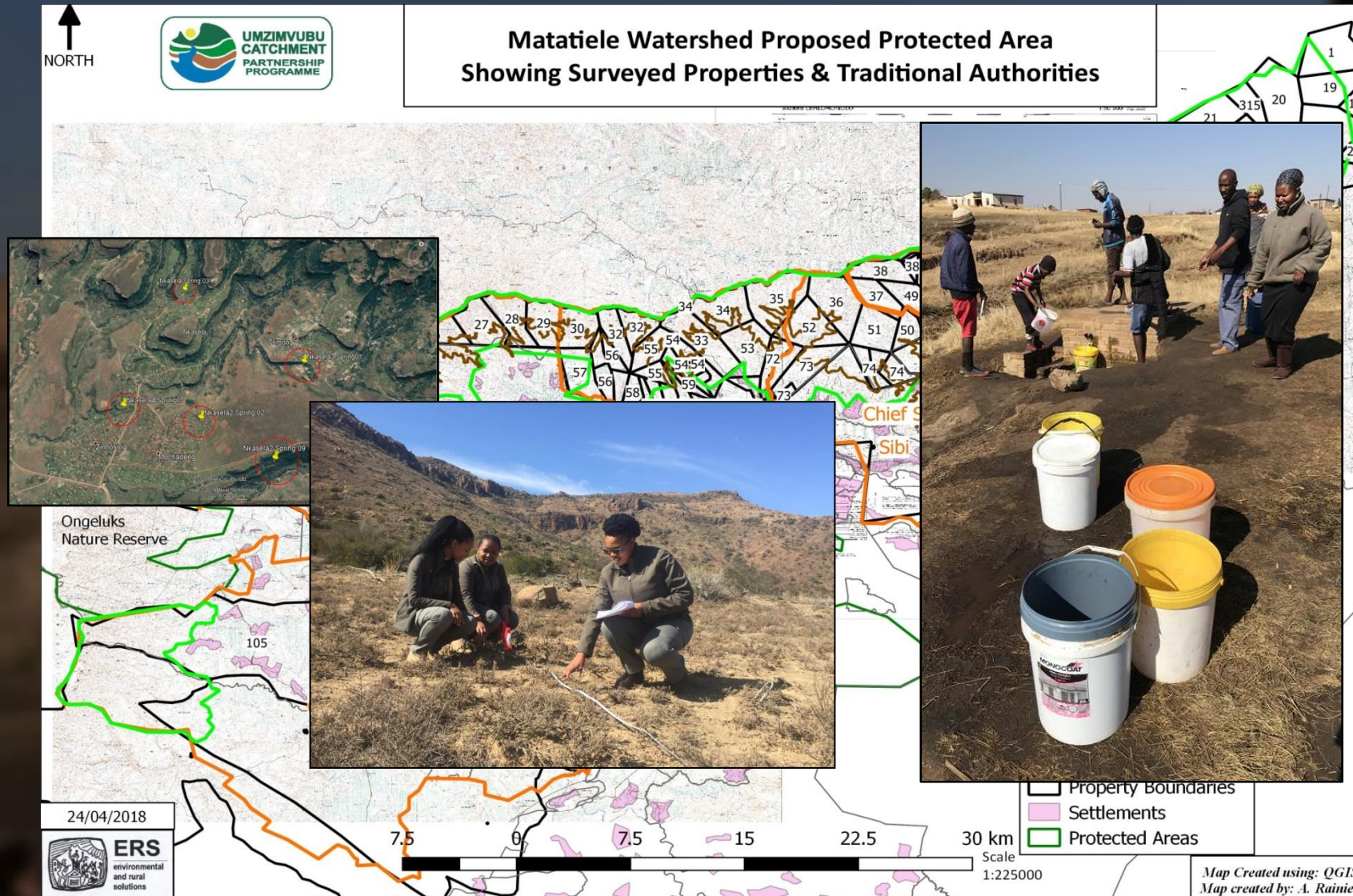
Our action plan...



20 - 25 springs
captured across 6
traditional areas

- R75k – R115k per
spring

Our action plan...



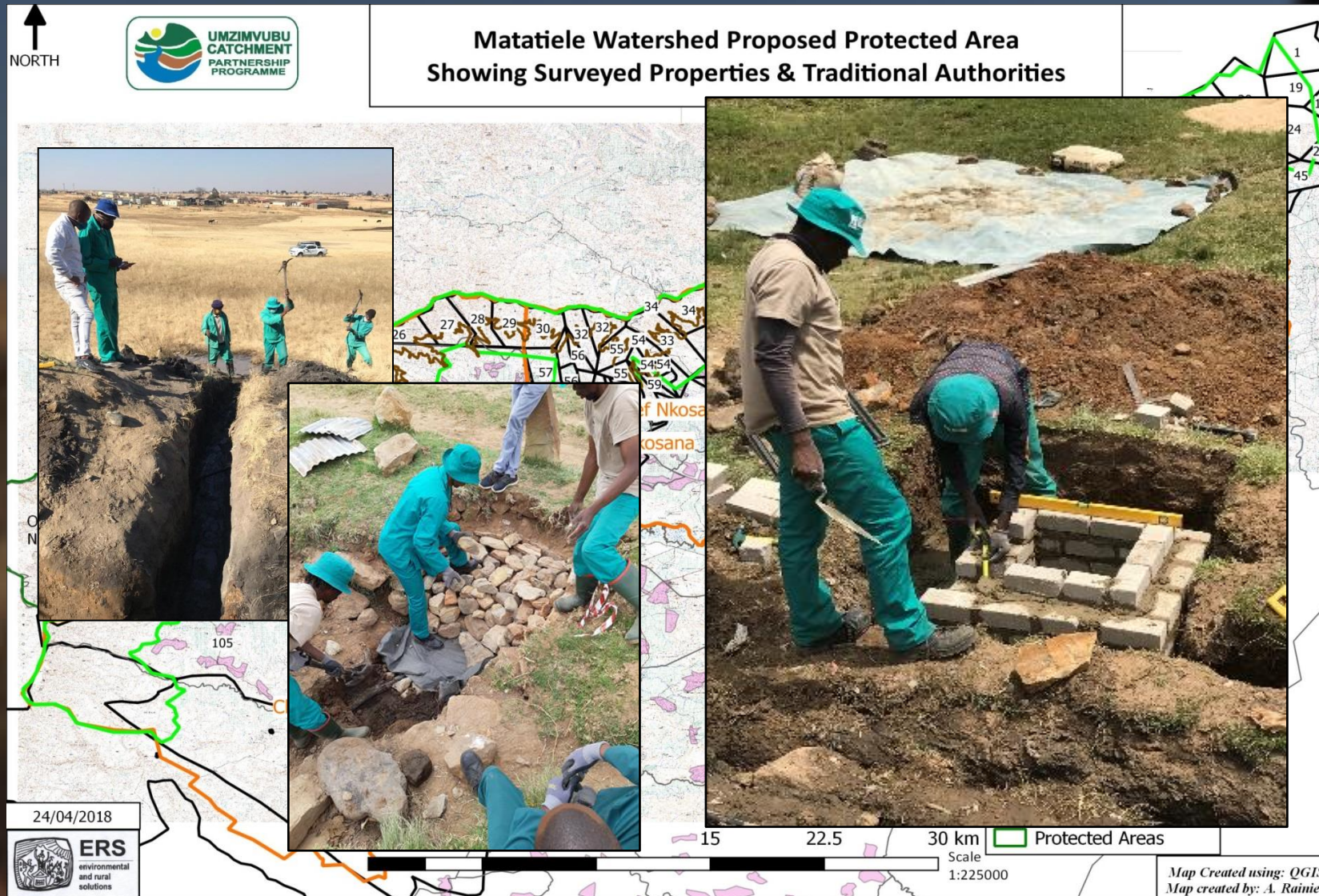
Understanding local context.

- Co-developed plan
- Incorporating local knowledge

Appropriate cost-effective tech

- Least dependence
- Most resilience

Our action plan...



25 springs captured
across 6 traditional
areas

Understanding local
context.

- Co-developed plan
- Incorporating local knowledge

Appropriate cost-
effective tech

- Least dependence
- Most resilience



- Threats

- Minimum supply, maximum people

- Communities best interest

Optimized approach...



Thank you