



SANBI

Biodiversity for Life

South African National Biodiversity Institute



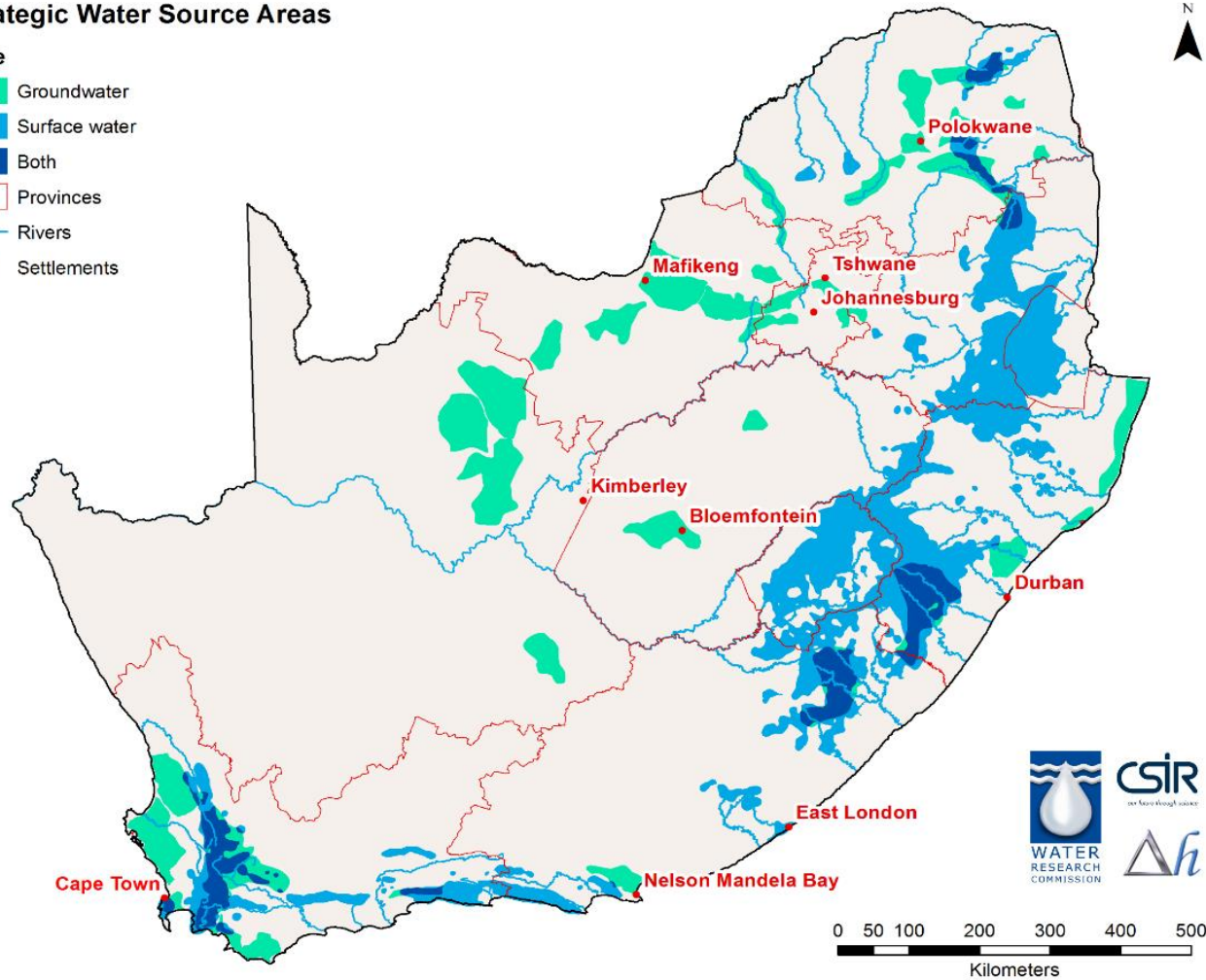
LIVING CATCHMENTS PROJECT UMZIMVUBU WORK PLAN 2021-22



Strategic Water Source Areas

Type

- Groundwater
- Surface water
- Both
- Provinces
- Rivers
- Settlements

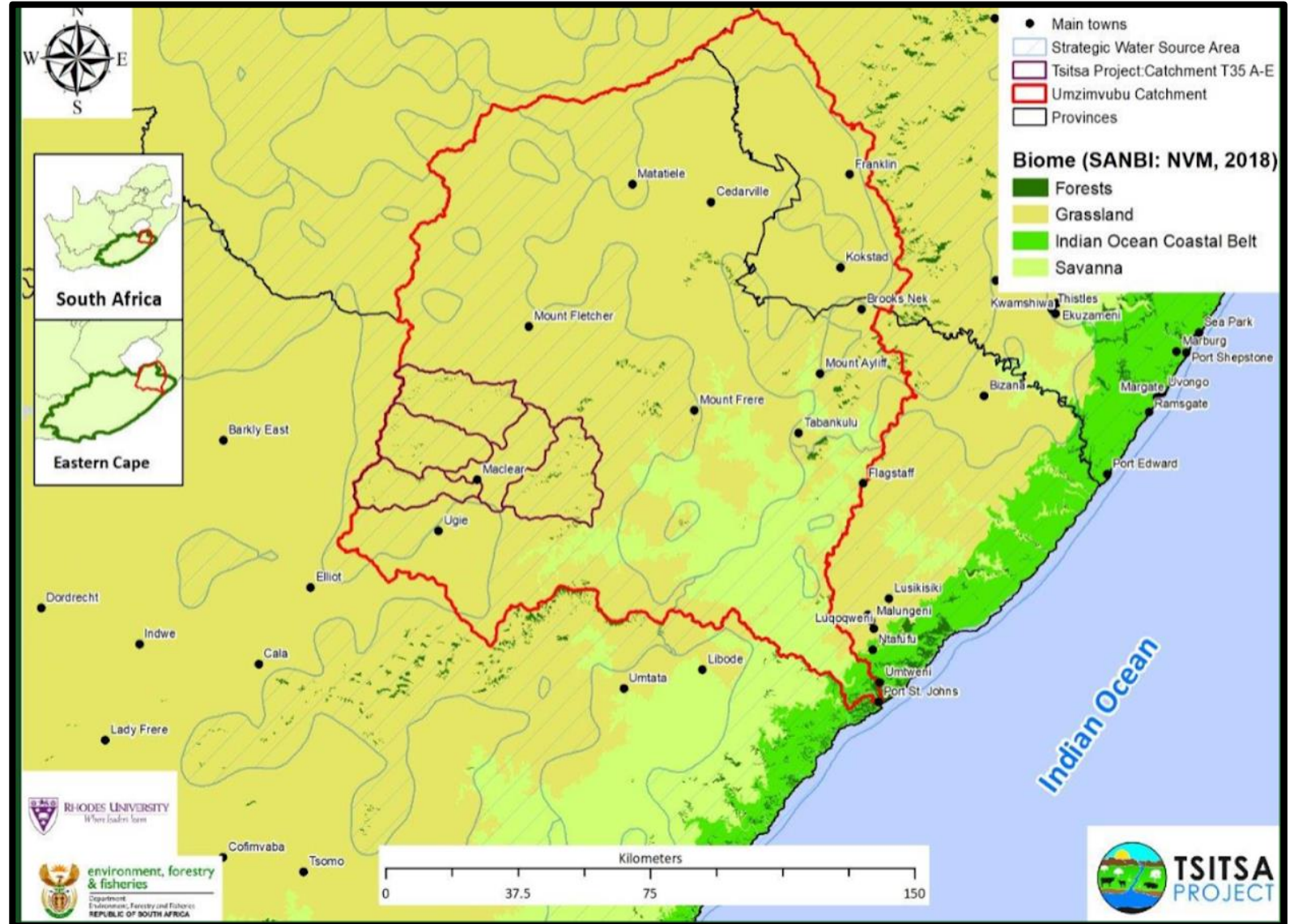


Strategic Water Source Areas for surface water and groundwater (SWSAs) in South Africa, Lesotho and Swaziland. Strategic Water Source Areas for groundwater were not identified in Lesotho and Swaziland because suitable data were not available.

UMZIMVUBU LCP WORK IN CONTEXT:

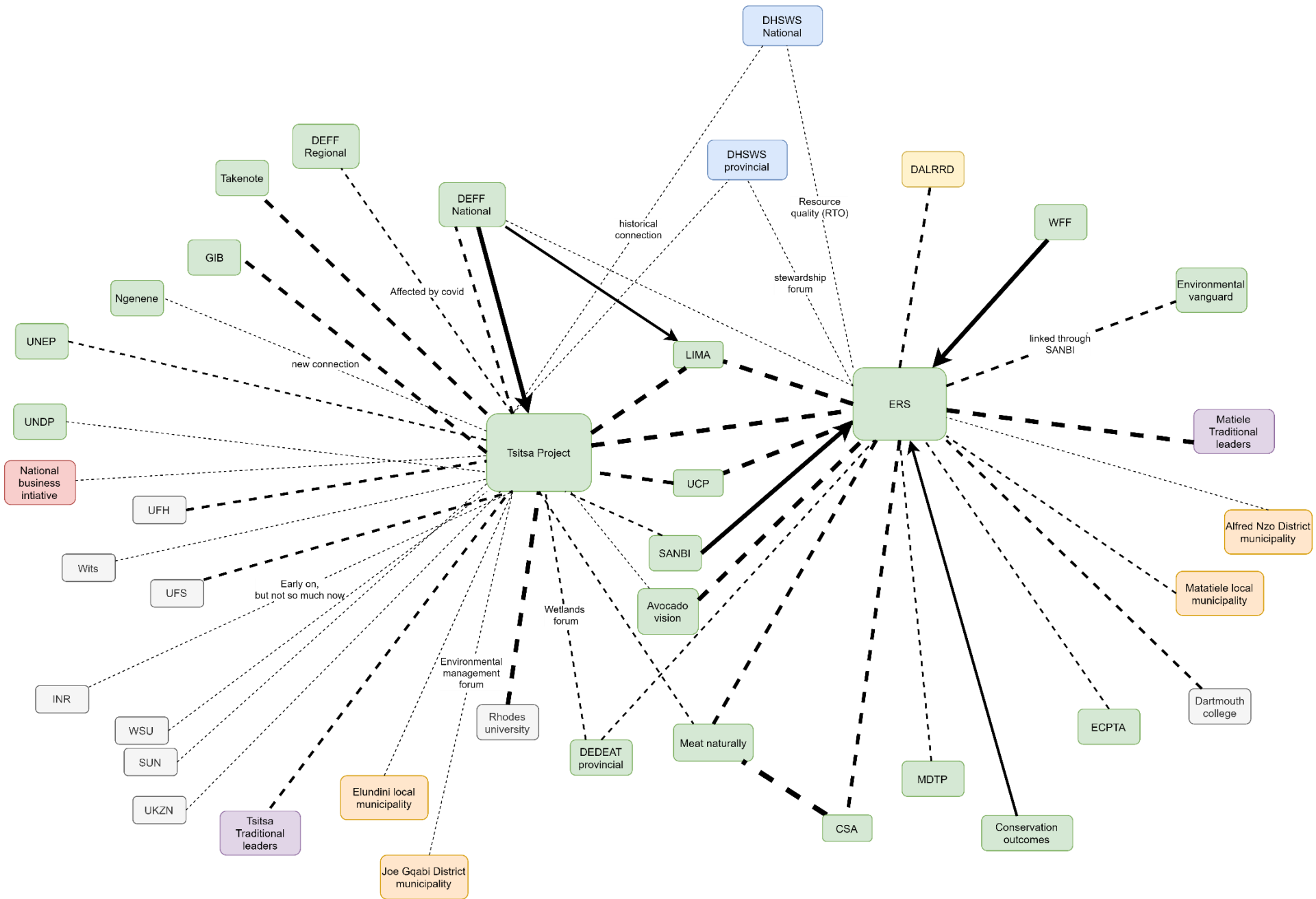
- Previous RDI work foundation
- UCP as established forum of catchment partners since 2013, practising and sharing; ERS is secretariat
- Tsitsa planning foundation and DFFE linkages
- Matat implementers actions (livestock and biomass value streams,
- ERS's WWF Nedbank contract for convening Water Source Partnership (WSP) til mid 2023

ToR : “ultimate goal to create an enabling environment for integrating built and ecological infrastructure to support water security, economic development and livelihood improvement”



“collaborative project with the intention to strengthen the enabling environment for water governance in South Africa”

SUMMARY OF YEAR 1 PLANNED ACTIONS TO MEET OUTPUTS	DUE DATES
1. INCEPTION REPORT (SEE MILESTONE 1 : SCOPE OF WORK, NETWORK MAP, COP IDEAS, EXISTING TOOLS ETC) <ul style="list-style-type: none"> - <i>Had initial internal session to plan: drafted table of milestone actions and a google drive</i> - <i>Mapping local built-EI-community nexus to deliver supply</i> - <i>SNA outline and mapping: DC 2019, with 26th Ant Fry (Rhodes PhD)</i> - <i>Workshops (incl. collective inception work)</i> - <i>Draft report format and start populating</i> 	26 April 2021
2. MONTHLY NEWSFLASHES, THEMES REFLECTING UCP COLLABORATION TO INCLUDE: <ul style="list-style-type: none"> - <i>Living Catchments project in reality: linking Tsitsa and Matat ground work</i> - <i>Spring protection & hydrocensus process</i> - <i>Youth role in catchment security (Ecochamps)</i> - <i>MTTM PE governance and stewardship</i> - <i>Green business value chain and FSC compliance</i> - <i>Cash cows in a time of corona: how the beef value chain is buffering livelihoods</i> 	Monthly
3. TWO LEARNING PLATFORM SESSIONS, LINK WITH UCP QLY SESSIONS WITH FOCUS ON TOR OUTCOMES <ul style="list-style-type: none"> - 31st quarterly meeting on 25th March, link with water day in field (ecochamps hydrocensus and spring work, etc) - Social Network Mapping exercise building on existing Dartmouth UCP and Tsitsa work ... develop CoPs? 	30 Sept 2021
4. REGULAR LIAISON SESSIONS WITH STAKEHOLDERS <ul style="list-style-type: none"> - Meetings being hosted between District Munic PMU, Traditional Authority and civil technical and social support - Spring protection toolkit being crafted for use in field, big focus on WASH and EI to support supply (CSA editor) 	
5. CATCHMENT BASED ANNUAL REPORT	1 Dec 2021
6. CASE STUDIES <ul style="list-style-type: none"> - <i>Fostering the built and EI nexus: collaboration between Local Govt, Traditional Authorities and Civil Society</i> - <i>Stewardship and incentives: the MTTM PA experience</i> 	30 Sept 2021



Understanding the importance of connectors

