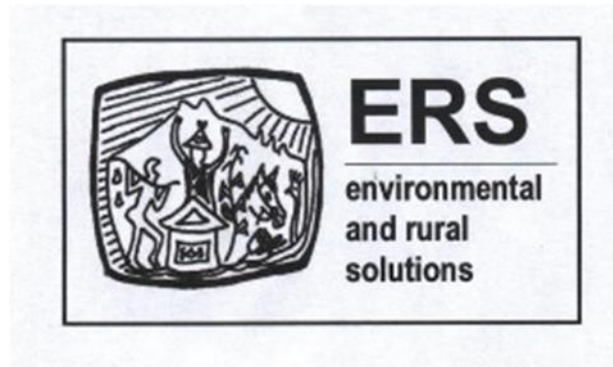
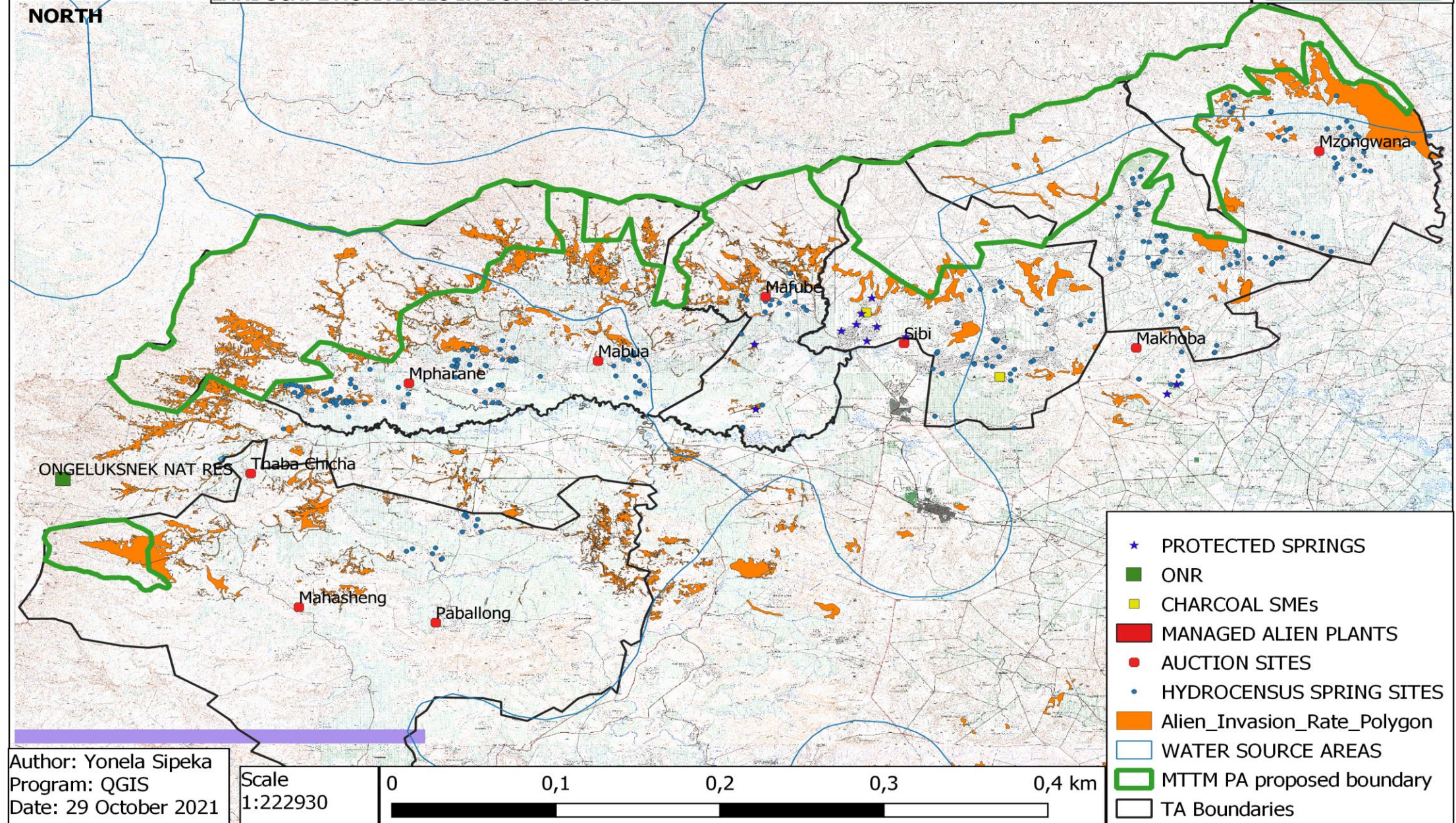


MALOTI THABA TSA METSI PROTECTED AREA: UPDATE NOVEMBER 2021





BOUNDARY DELINEATION

- TRADITIONAL LEADERS FROM ALL SIX TRIBAL AUTHORITIES HAVE AGREED TO THE BOUNDARY.
- DECLARATION DIAGRAMS SIGNED BY THE TRIBAL AUTHORITIES.
- ROBERTDALE FARM IS PRIVATELY OWNED AND THE OWNER HAS AGREED TO BE PART OF THE PROCESS AND HAS SIGNED THE DECLARATION DIAGRAM.

EXCLUDED PROPERTIES

- MAFUBE-THABANA TSOANA AREA, EXCLUDED DUE TO NON-COOPERATION BY THE LEADERSHIP, COULD BE PART OF PHASE 2, TO EXPAND.
- FREEMANTLE FARM HAS BEEN EXCLUDED DUE TO CLAIM ISSUES.
- GLEN ALFRED FARM (PORTION 0,1 AND 3) PRIVATELY OWNED AND HAVE BEEN EXCLUDED.

CURRENT STATUS

**ALL COMMUNITY RESOLUTIONS SIGNED,
FACILITATED UNDER IPILRA BY DRDAR &
ECPTA**

**MANAGEMENT PLAN DRAFT WITH
COMMENTS HAS BEEN SUBMITTED TO ECPTA
ON 30 JUNE, BASED ON EXTENSIVE
CONSULTATION DESPITE COVID RESTRICTIONS**

**STAKEHOLDER UPDATES HELD QUARTERLY,
CONTRIBUTED TO PAMP, IMPLEMENTATION
PLANNING, MANAGEMENT AUTHORITY, ETC**

**ACTIVE WHATS APP GROUP WITH ALL CHIEFS
AND KEY STAKEHOLDERS INCL WWF, DWS,
DEDEAT, CONTRALESA, MUNICIPALITIES,
NGOs**



CURRENT STATUS CONTINUED

**MTTM PA VOLUNTARY ASSOCIATION HAS
BEEN ESTABLISHED.**

**EACH TRIBAL AUTHORITY TO BE
REPRESENTED IN THE MANAGEMENT
AUTHORITY.**

**MANAGEMENT AUTHORITY
CONSITUTION HAS BEEN SIGNED AND
ADOPTED.**

**INAUGURAL AGM OF MTTM PA
VOLUNTARY ASSOCIATION.**



NEXT STEP

- ESTABLISH MANAGEMENT COMMITTEE AND ELECT OFFICE BEARERS.
- SUBMIT SIGNED PROCLAMATION DIAGRAMS WITH SIGNED IPIIRA COMMUNITY RESOLUTIONS TO THE SG FOR APPROVAL
- SUBMIT INTENTION TO DECLARE TO THE MEC.

THANK YOU