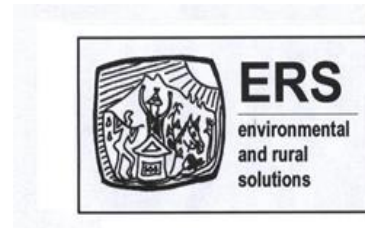


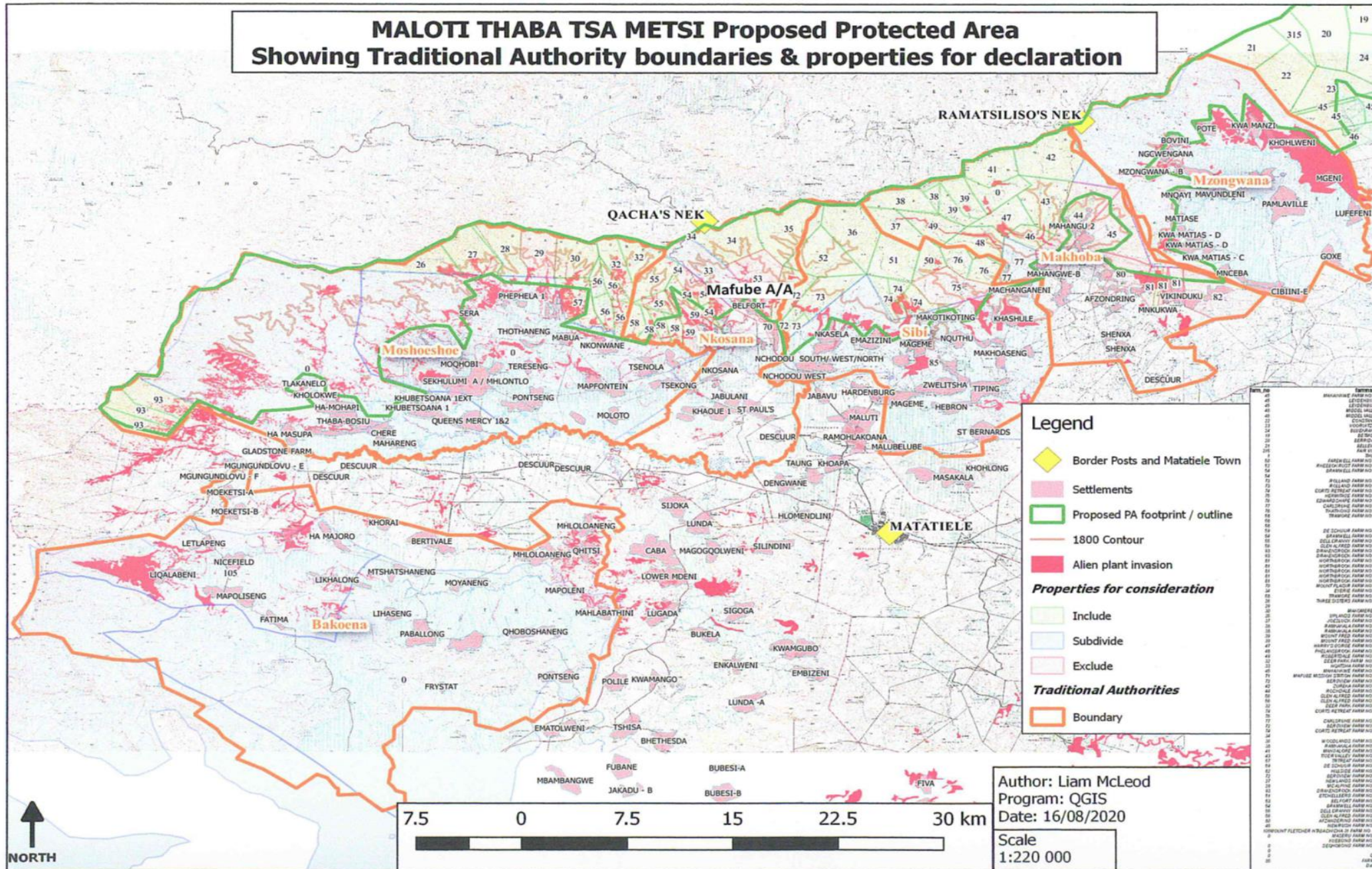
# MATATIELE WATERSHED STEWARDSHIP UPDATE

UCP Quarterly Meeting

25 March 2021



# MALOTI THABA TSA METSI Proposed Protected Area Showing Traditional Authority boundaries & properties for declaration





# Boundary Delineation

Protected area boundary for the following 3 Tribal Authorities is still outstanding:

- **Mzongwana T/A:** in-field inspection with the chief and the committee.
- **Mafube A/A:** still need to be finalised.
- **Bakoena T/A:** still need to be finalised.

# In-field inspection inside the Proposed Protected Area





# MTTM PE PAMP

- Due to COVID-19 lockdown restrictions relaxation, Management plan discussions have been scheduled to take place within the outstanding tribal authorities.
- Guideline document with a list of questions has been developed to guide SANBI eco-champs to conduct meaningful consultation for management plan inputs.
- Eco-champs have been administering questionnaires with the support from ERS Staff. Information and inputs collected will be collated and included in the development of the protected area management plan.
- Interviews have been administered across all tribal authorities.

# Discussion points during consultation.

- Livestock management.
- Fire management.
- Water resource management.
- Erosion.
- Alien plants
- Tourism.

- Livestock herder being interviewed by eco-champs to get PAMP inputs.



# Challenges

- Covid 19 restrictions have significantly impacted the progress of the development of management plan and finalization of boundaries.
- Lack of representation of other Tribal Authorities at Stewardship meetings.
- Clarity on chieftainship boundaries.



# Lessons learnt

- Despite having to halt management plan discussions with communities because of covid-19 restrictions, we have been able to be strategic and innovative, on how we gather inputs and information to be used in the development of the management plan.

## THANK YOU

